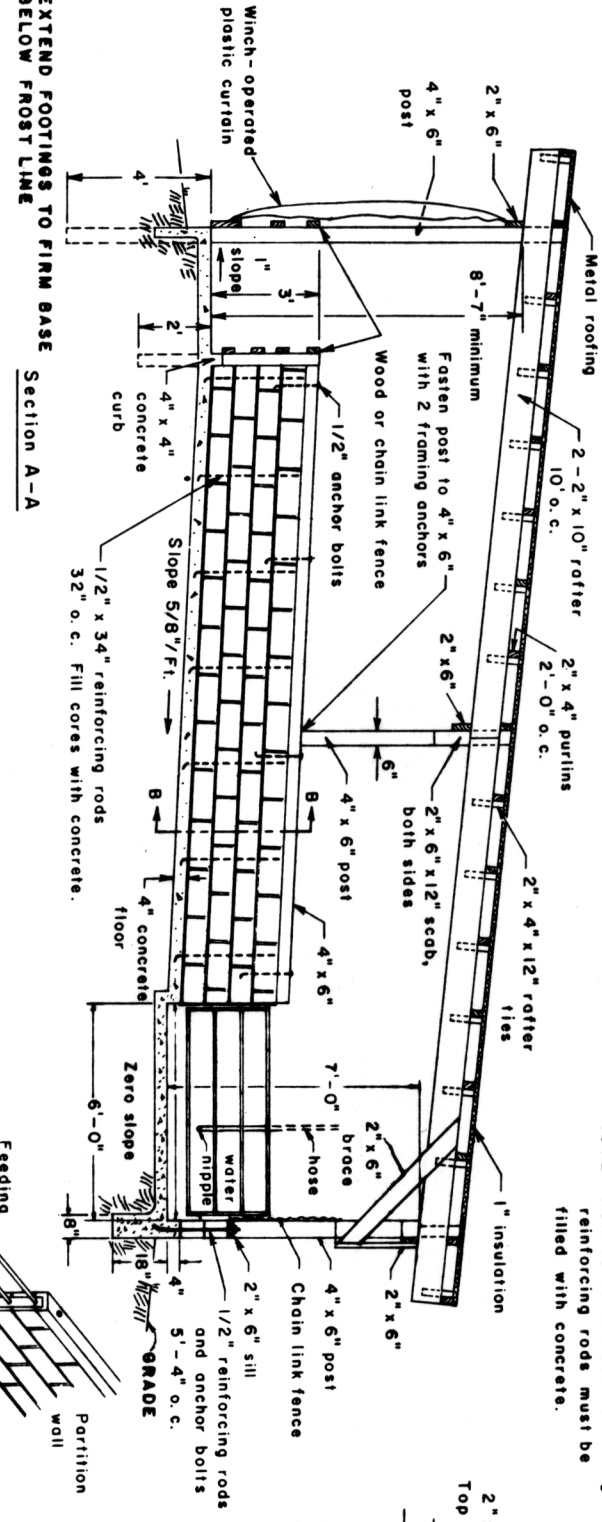
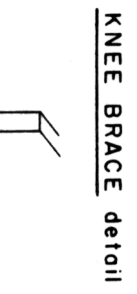


**FLOOR PLAN**

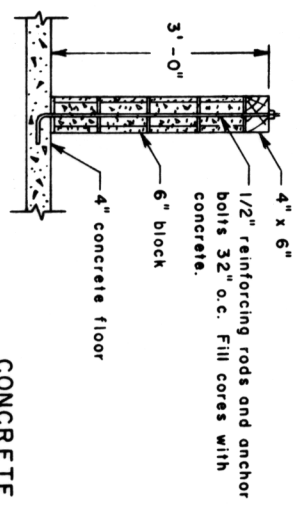
NOTE: Wall cores in block containing reinforcing rods must be filled with concrete.



**Section A-A**



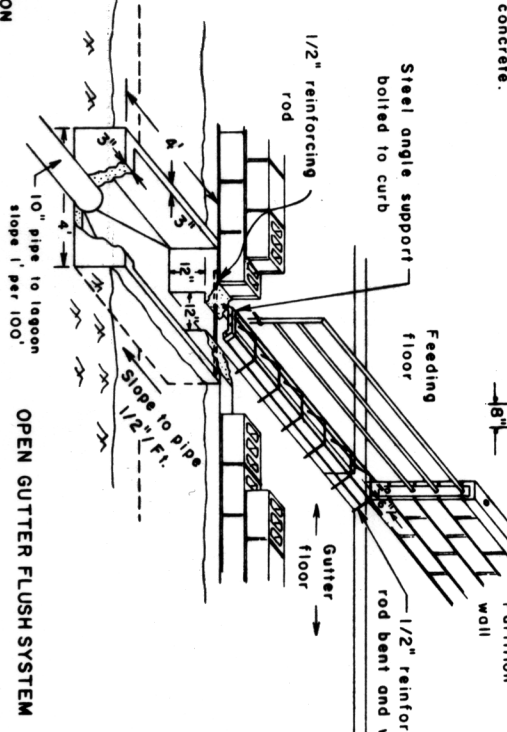
**KNEE BRACE detail**



**Section B-B**

**CONCRETE CATCH BASIN AND GUARDS detail**

NOTE: CONSULT LOCAL HEALTH AND BUILDING CODE AUTHORITIES BEFORE STARTING CONSTRUCTION



**OPEN GUTTER FLUSH SYSTEM**

BASED ON: UNIV. OF MD. PLAN 75-1-7

COOPERATIVE EXTENSION WORK IN AGRICULTURE AND HOME ECONOMICS

UNITED STATES DEPARTMENT OF AGRICULTURE COOPERATING AND

SWINE FINISHING HOUSE

MD. '76 6241 SHEET 1 OF 1