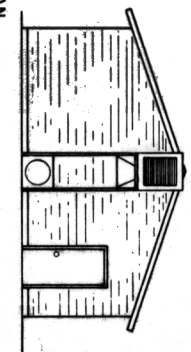
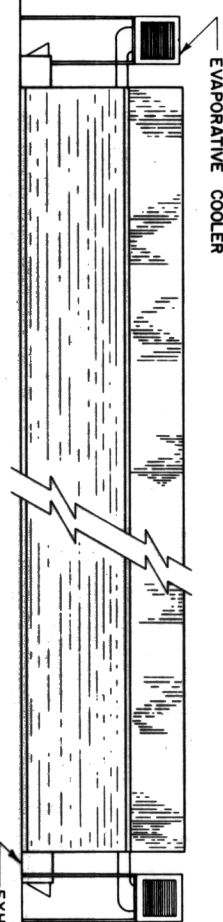
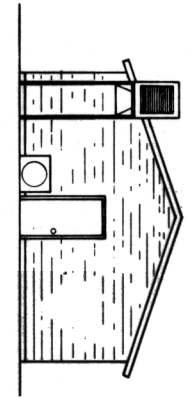


FLOOR PLAN



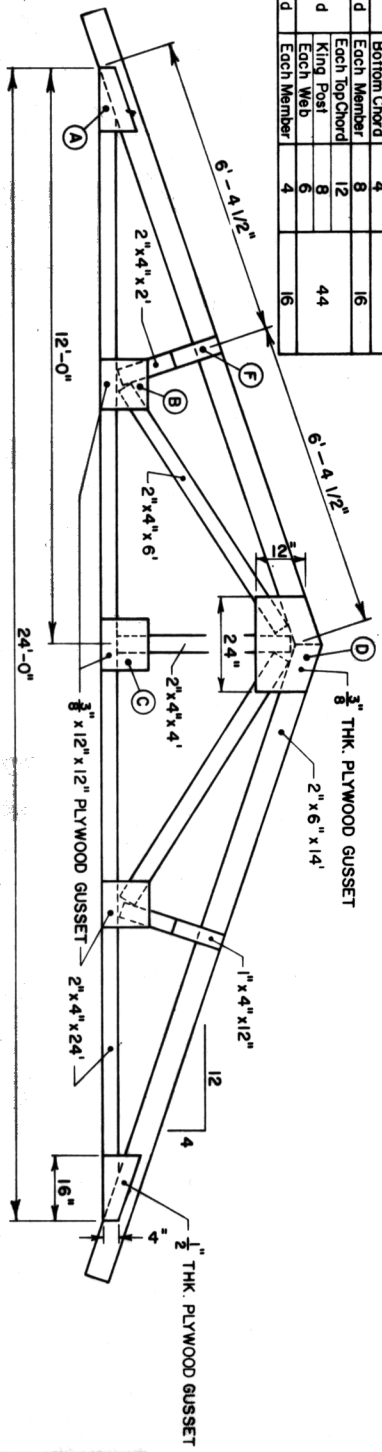
ELEVATIONS



NOTE:
When Building Or Enhancing A Confinement Swine System You Are Encouraged To Employ A Registered Consulting Agricultural Engineer. The Engineering Consultant Will Be Concerned With Providing The Best System Designed For Your Specific Needs.

JOINT MAIL SIZE	MEMBER	NO. REQ'D	NO. PER TRUSS
A	12 d Each Member	14	56
B	10 d Long Web	4	28
C	10 d Short Web	4	16
D	10 d Each Top Chord	8	44
E	10 d King Post	8	44
F	12 d Each Member	4	16

- TRUSS NOTES:**
1. Pre-fabricated Trusses With Metal Press-Plate Connectors May Be Used.
 2. Apply Gusssets On Both Sides Of Joint Except On End Trusses.
 3. Drive One Half Of All Nails Listed From Each Side Of Joint.
 4. Use Deformed-Shank High-Carbon Steel Nails.
 5. Use Exterior-Grade C-C Plywood For Gusssets.



NAILED TRUSS DETAILS



NOTE:
CONSULT LOCAL HEALTH AND BUILDING CODE AUTHORITIES BEFORE STARTING CONSTRUCTION

BASED ON: OKLA. STATE UNIV.
PLAN NO. OK-726-24

COOPERATIVE EXTENSION WORK IN
AGRICULTURE AND HOME ECONOMICS

UNITED STATES DEPARTMENT OF AGRICULTURE COOPERATING

FARROWING HOUSE
FOR 30 SOWS

OK. '76 6247 SHEET 1 OF 5