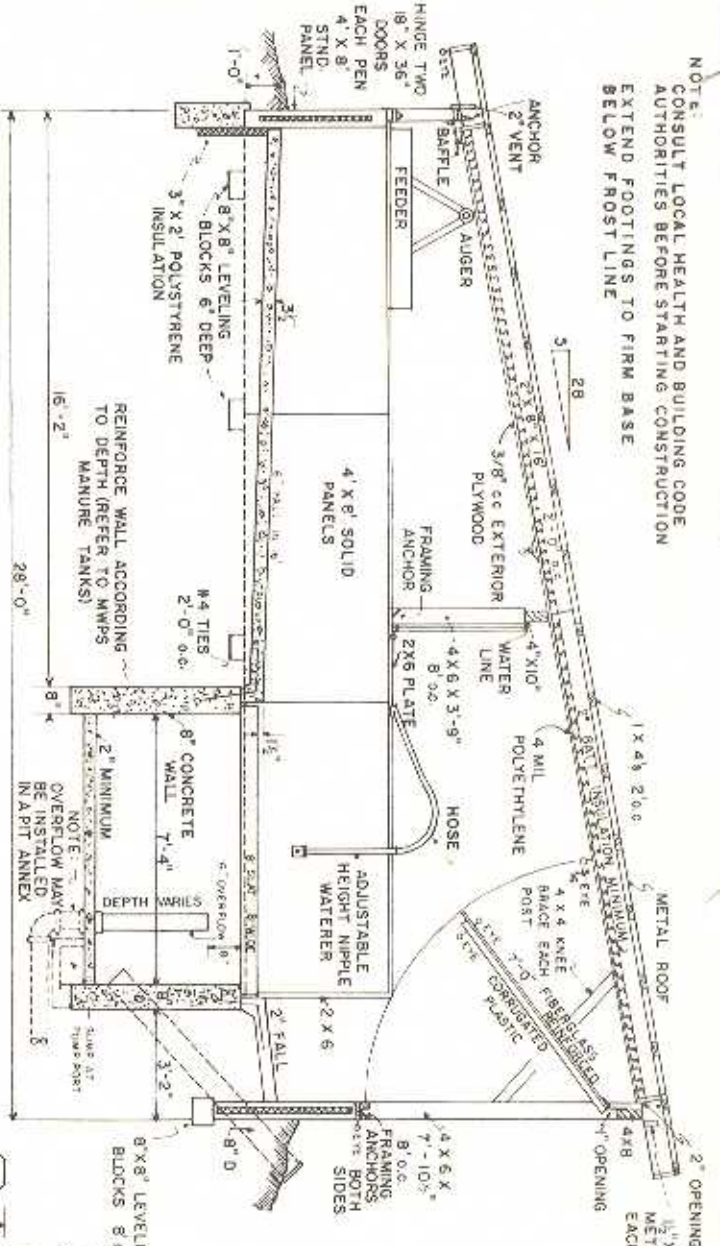
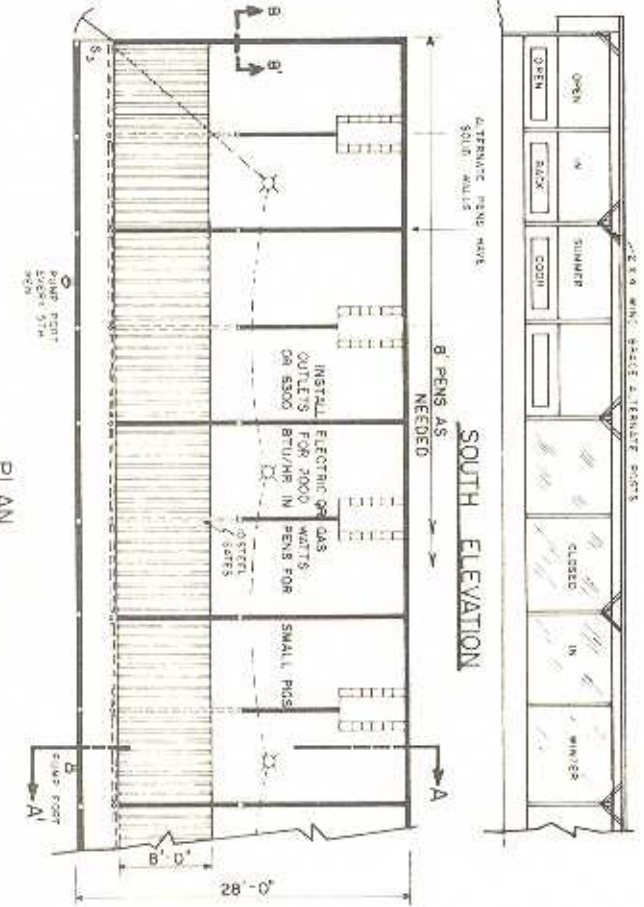


NOTE:
CONSULT LOCAL HEALTH AND BUILDING CODE
AUTHORITIES BEFORE STARTING CONSTRUCTION
EXTEND FOOTINGS TO FIRM BASE
BELOW FROST LINE



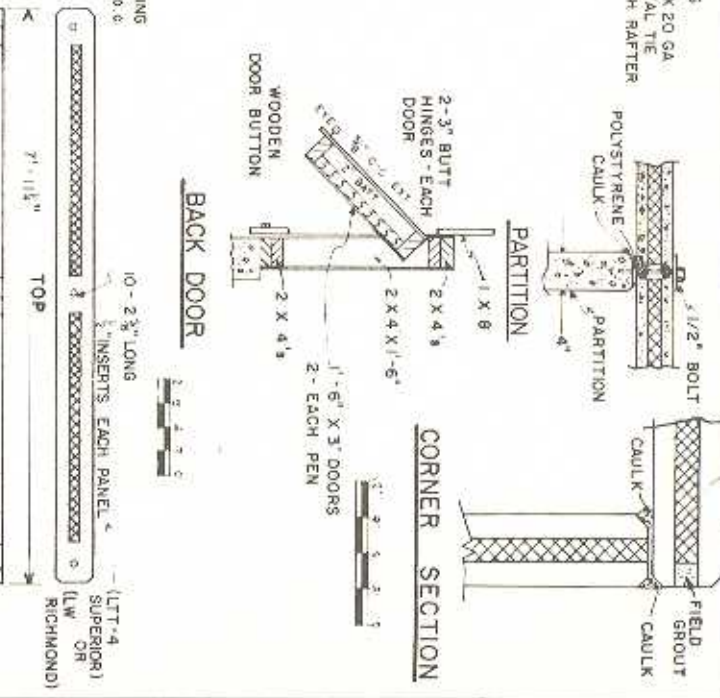
FOGGERS MAY BE INSTALLED OVER SLATS
1-1/2 GPH 90° NOZZLE PER PEN

SECTION AA



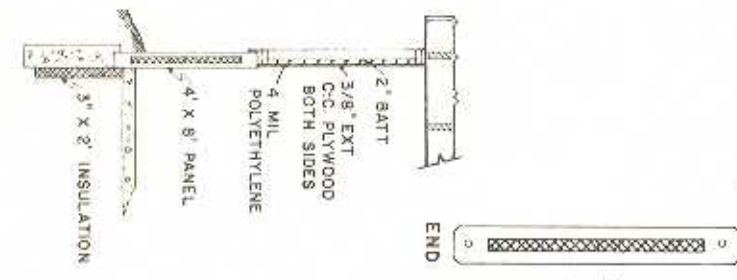
SOUTH ELEVATION

PLAN

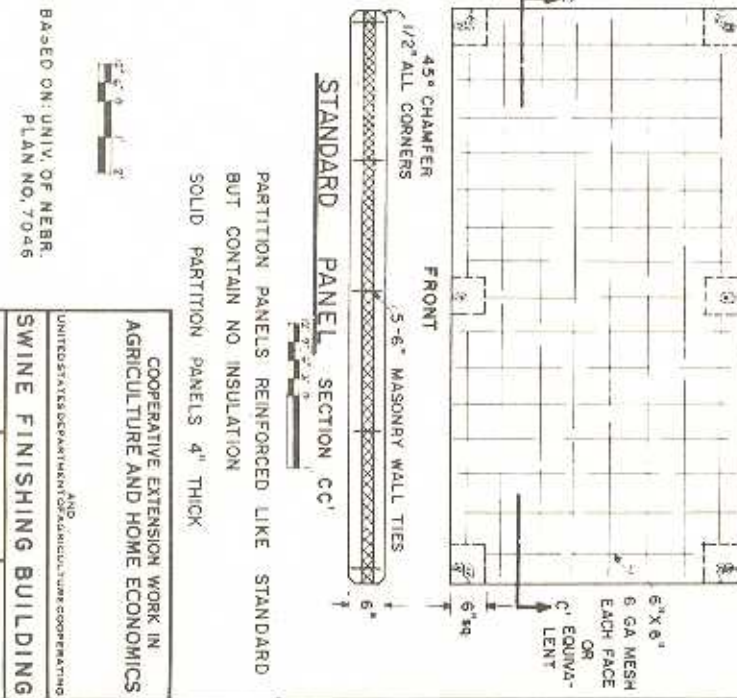


CORNER SECTION

BACK DOOR



SECTION BB



STANDARD PANEL SECTION CC

PARTITION PANELS REINFORCED LIKE STANDARD
BUT CONTAIN NO INSULATION
SOLID PARTITION PANELS 4" THICK

BASED ON: UNIV. OF NEBR.
PLAN NO. 7046

COOPERATIVE EXTENSION WORK IN
AGRICULTURE AND HOME ECONOMICS

UNITED STATES DEPARTMENT OF AGRICULTURE
AND
NEBRASKA STATE COLLEGE OF AGRICULTURE

SWINE FINISHING BUILDING

NEBR. '77 6274 SHEET 1 OF 1