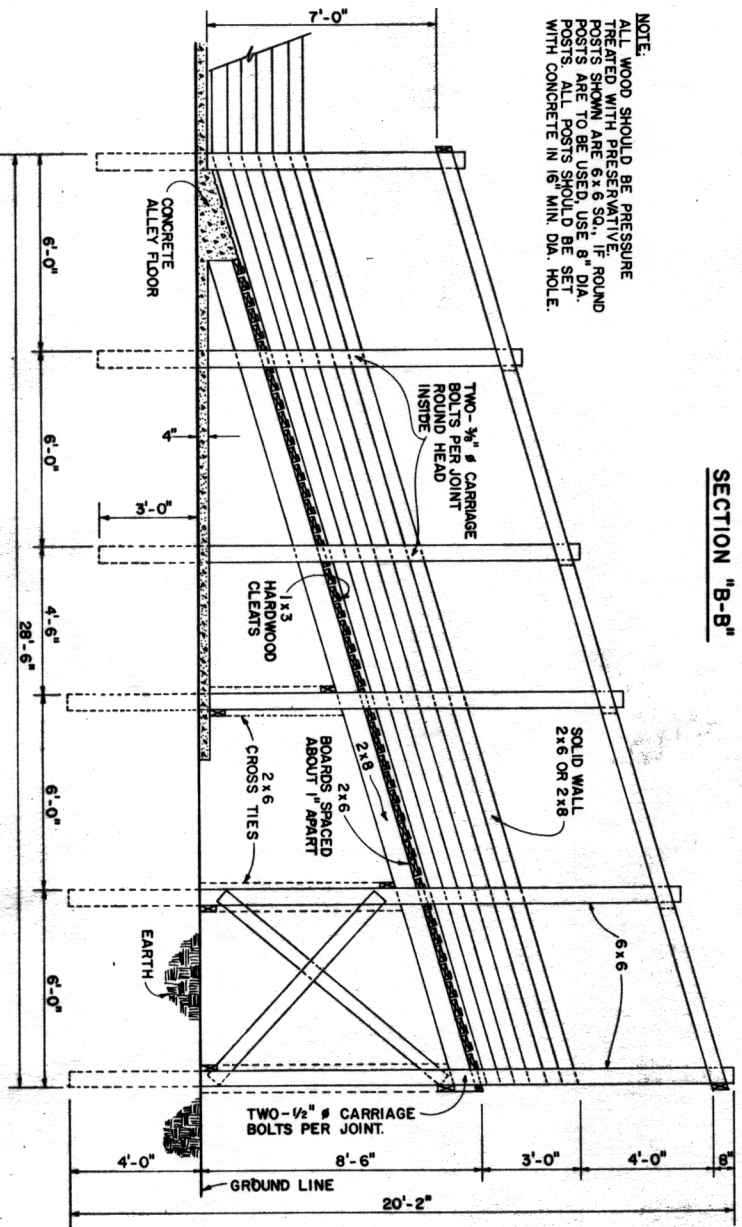
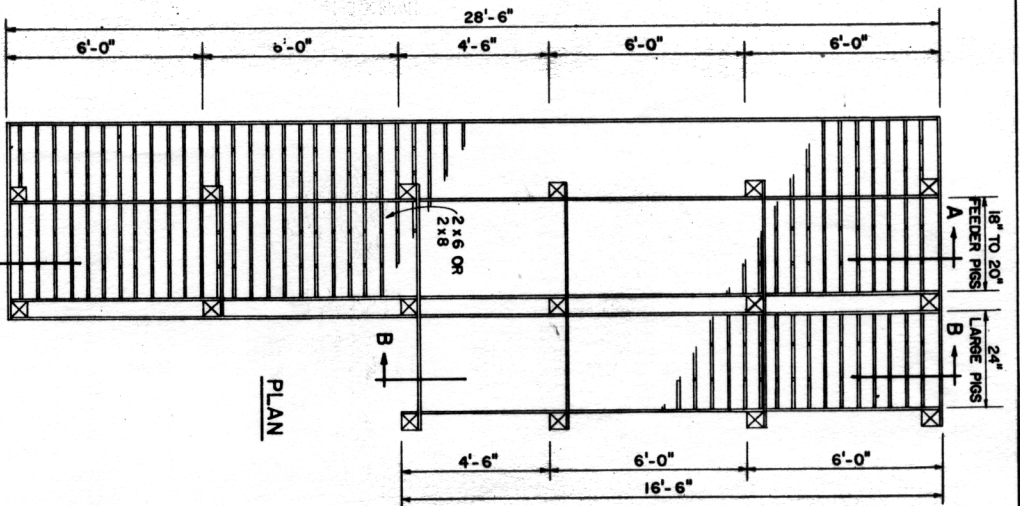


NOTE:
ALL WOOD SHOULD BE PRESURE TREATED WITH PRESERVATIVE. ROUND POSTS SHOWN ARE 6x6 SIZES. 6" DIA. POSTS ARE TO BE USED. USE SET-SCREW CONCRETE IN 16" MAIN DIA. HOLE.



SECTION "B-B"

SECTION "A-A"



PLAN



BASED ON MISSISSIPPI ST. U. PLAN NO. 5960-A

Agricultural Engineering Department
Cooperative Extension Service
University of Maryland
College Park — Eastern Shore
U.S. Dept. of Agriculture Cooperating

HOG LOADING CHUTE

MSS. 78 6309 SHEET 1 OF 1