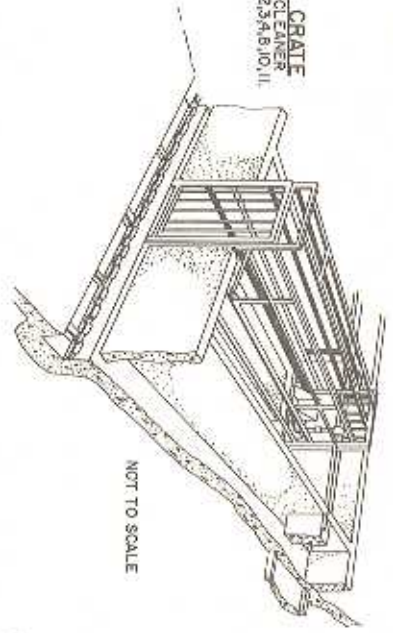
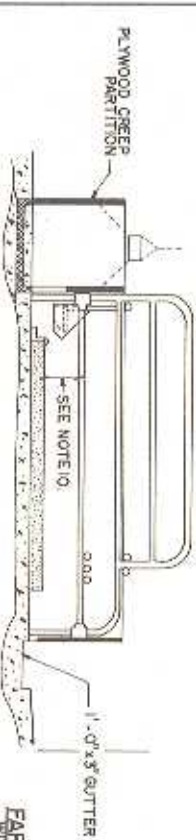


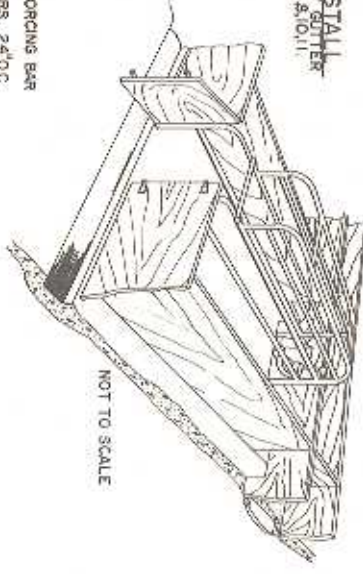
FARROWING CRATE WITH GUTTER CLEANER SEE NOTE 1, 2, 3, 4, 8, 10, 11.



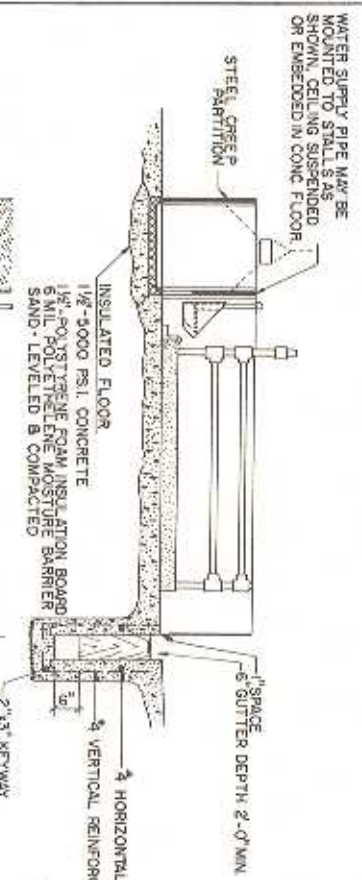
NOT TO SCALE



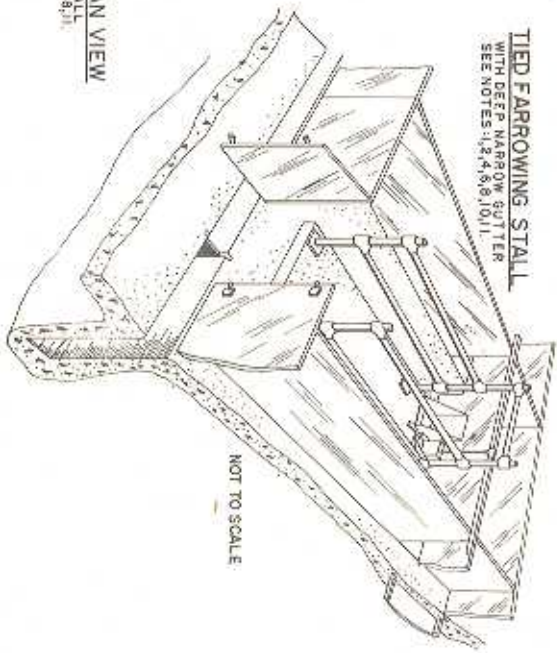
FARROWING STALL WITH SHALLOW GUTTER SEE NOTE 1, 2, 4, 8, 10, 11



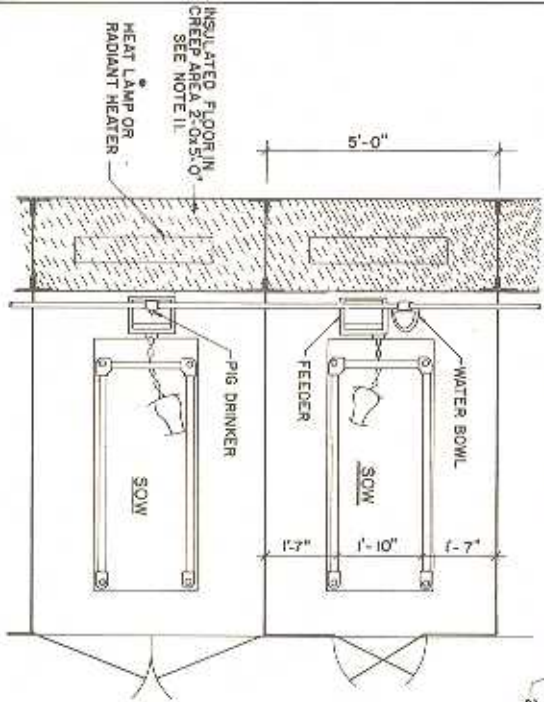
NOT TO SCALE



TIED FARROWING STALL WITH DEEP NARROW GUTTER SEE NOTES 1, 2, 4, 8, 10, 11.



NOT TO SCALE



COMMON PLAN VIEW OF FARMING STALL SEE NOTE 1, 2, 4, 8, 10, 11.

NOTES:

- The plan illustrates 3 types of hardware for farrowing stalls. All have types fit into a floor area approx. of 4' x 5' - 0" to 4' - 6" x 5' - 0". For exact dimensions and location of hardware see manufacturer before setting forms for concrete.
- All stalls shown are interchangeable with any of the waste disposal systems shown.
- Gutter for mechanical gutter cleaner should be as narrow as possible. See manufacturer for minimum dimensions available.
- Stall partitions to be 16" high for pigs up to 4 weeks of age, or 24" high for pigs to 6 weeks of age.
- Gate may be as shown, or 3-foot wide of stall and hinged both ends.
- Deep gutter to have removable barriers 10" - 0" O.C. and located under stall gates, for removal. Gutter bottom to slope 1/4" - 25" - 0" forward outlet noise. DO NOT USE BEDDING WITH DEEP GUTTER.
- Alternative to water bowl may be nozzle drinker or nozzle drinker in use, see manufacturer for size and height above floor.
- Note for 2 rows of stalls, face in or face out, minimum inside building width is 27'-0".
- Tied farrowing may not work for some cows and most girls, therefore do not use tied stalls actually.
- With the raise and the height of bottom bar of the farrowing crate should be adjustable 8" to 10" above the feet, not above the floor.
- Electric resistance heat cable or hot water piping can be used in the creeps or in the raised or radiant heaters. Proper design of piping is required. See the 1/2" x 2" of polyethylene insulation. Add 1/2" of finished concrete on top of cable or piping.



SCALE:

COOPERATIVE EXTENSION WORK IN AGRICULTURE AND HOME ECONOMICS

UNIVERSITY OF CALIFORNIA, DIVISION OF AGRICULTURAL AND MECHANICAL INDUSTRIES

FARROWING STALL WITH FRONT CREEP

USDA 791 EX 6318 SHEET 1 OF 1