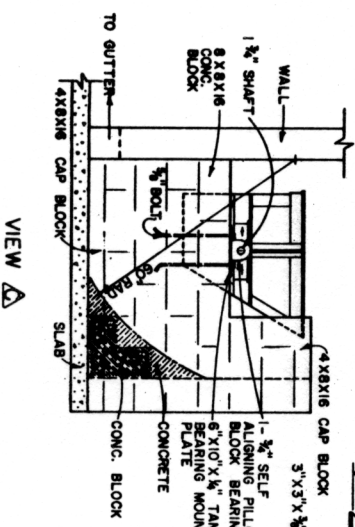
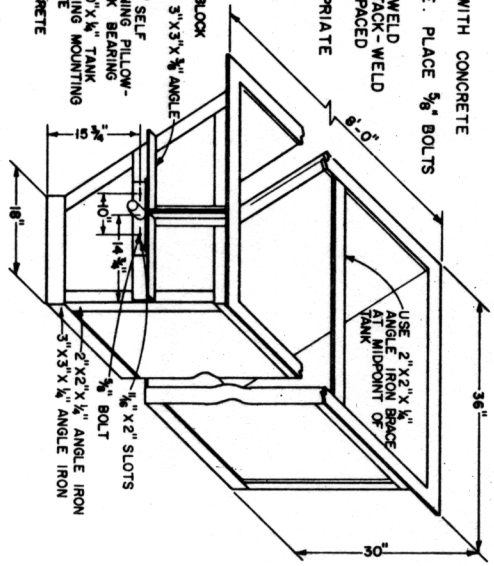


PLAN

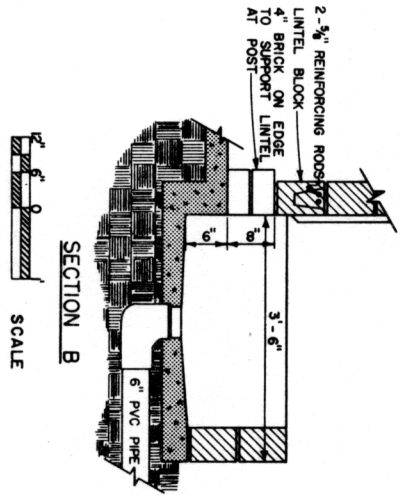
- NOTES FOR FLUSH TANK.
1. FORM CURVED SPLASH SURFACE WITH CONCRETE BLOCKS AND CONCRETE.
 2. FILL ALL CORES WITH CONCRETE. PLACE $\frac{5}{8}$ " BOLTS WHEN FILLING CORES.
 3. USE 12 GAUGE SHEET METAL. WELD CONTINUOUSLY TO AVOID LEAKAGE. TACK-WELD FRAME TO TANK WITH 2" WELDS SPACED 8" O.C.
 4. USE EPOXY PAINT WITH APPROPRIATE PRIMER.
 5. ADJUST SHAFT AS NEEDED TO BALANCE TANK. WEIGHTS MAY BE NEEDED FOR FINAL BALANCING.



VIEW A



FLUSH TANK



SECTION B

SCALE

COOPERATIVE EXTENSION WORK IN AGRICULTURE AND HOME ECONOMICS

UNITED STATES DEPARTMENT OF AGRICULTURE COOPERATING AND

SWINE GESTATION BUILDING

AL '83 EX. 6351 SHEET 1 OF 2