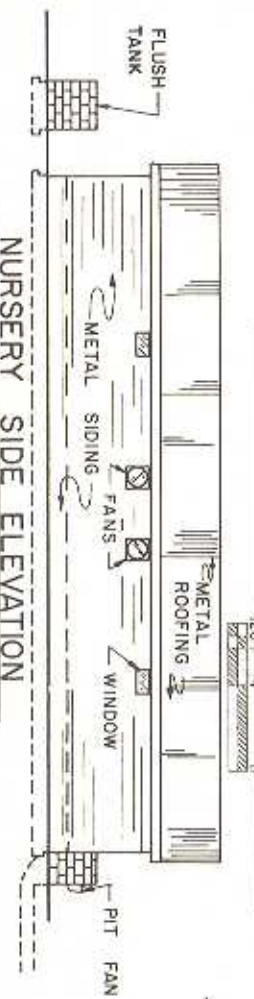
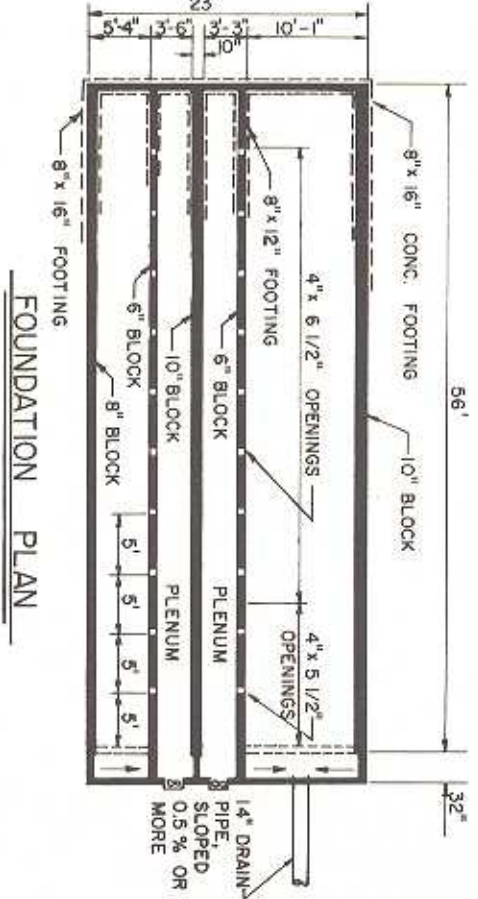
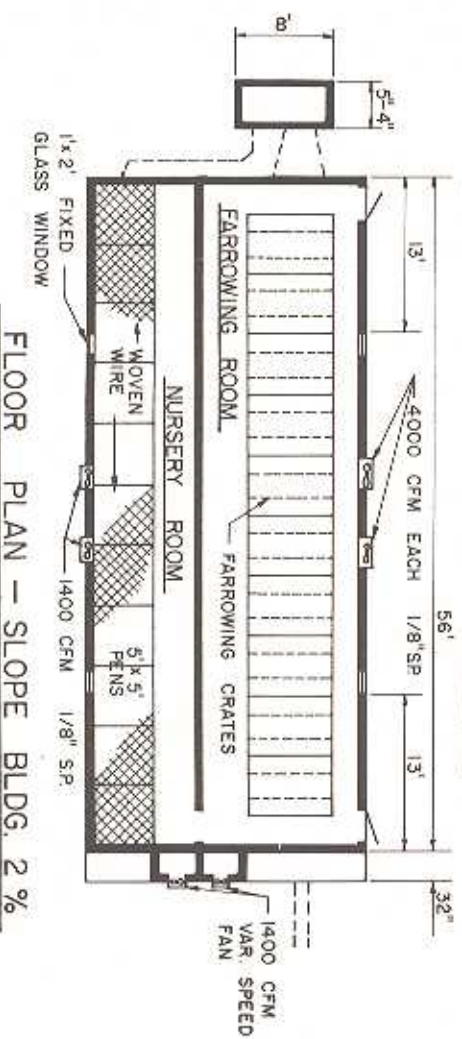


NOTE:  
GRADE SITE AND CONSTRUCT BUILDING ON 2% SLOPE.

NOT TO SCALE



NOTE:

THIS BUILDING IS DESIGNED FOR A FOUR GROUP PRODUCTION SCHEDULE. SOWS FARROW EVERY 37 DAYS AND PIGS ARE WEANED AT 30 DAYS OF AGE AND MOVED INTO NURSERY UNTIL 65 DAYS OF AGE.

THOROUGHLY CLEAN EACH ROOM BETWEEN GROUPS.

COOPERATIVE EXTENSION SERVICE  
AGRICULTURE AND HOME ECONOMICS

UNITED STATES DEPARTMENT OF AGRICULTURE COOPERATING

TO CRATE FARROWING AND NURSERY - FLUSH UNDER SLATS

NC 85 6372 SHEET 1 OF 1