

Break-Even Method of Investment Analysis

Fact Sheet No. 3.759

Farm and Ranch Series | Economics

by P.H. Gutierrez and N.L. Dalsted*

Break-even analysis is a useful tool to study the relationship between fixed costs, variable costs and returns. A break-even point defines when an investment will generate a positive return and can be determined graphically or with simple mathematics. Break-even analysis computes the volume of production at a given price necessary to cover all costs.

Break-even price analysis computes the price necessary at a given level of production to cover all costs. To explain how break-even analysis works, it is necessary to define the cost items.

Fixed costs, incurred after the decision to enter into a business activity is made, are not directly related to the level of production. Fixed costs include, but are not limited to, depreciation on equipment, interest costs, taxes and general overhead expenses. Total fixed costs are the sum of the fixed costs.

Variable costs change in direct relation to volume of output. They may include cost of goods sold or production expenses such as labor and power costs, feed, fuel, veterinary, irrigation and other expenses directly related to the production of a commodity or investment in a capital asset. Total variable costs (TVC) are the sum of the variable costs for the specified level of production or output. Average variable costs are the variable costs per unit of output or of TVC divided by units of output.

Total fixed costs are shown in Figure 1 by the broken horizontal line. Total fixed costs do not change as the level of production increases. Total variable costs of production are indicated by the broken line sloping upward, which illustrates that total variable costs increase directly as production increases.

The total cost line is the sum of the total fixed costs and total variable costs. The total cost line parallels the total variable cost line, but it begins at the level of the total fixed cost line.

The total income line is the gross value of the output. This is shown as a dotted line, starting at the lower left of the graph and slanting upward. At any point, the total income line is equivalent to the number of units produced multiplied by the price per unit.

The key point (break-even point) is the intersection of the total cost line and the total income line (Point P). A vertical line down from this point shows the level of production necessary to cover all costs. Production greater than this level generates positive revenue; losses are incurred at lower levels of production.

Mathematical Explanation

The graphic method of analysis helps the reader understand the concept of the **break-even point**. However, graphing the cost and income lines is laborious. The break-even

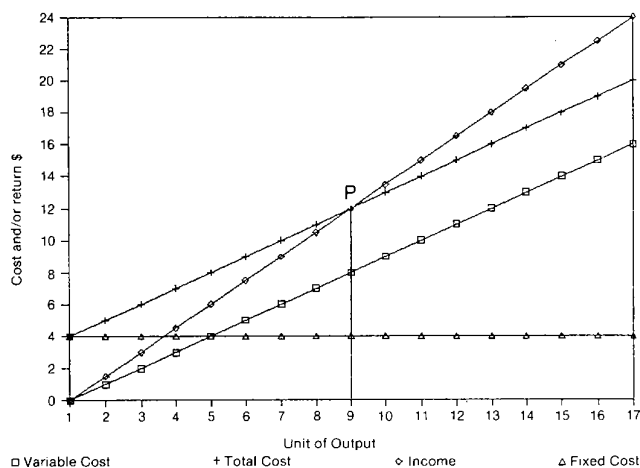


Figure 1: Graph form of break-even analysis.



Quick Facts

- A break-even point defines when an investment will generate a positive return.
- Fixed costs are not directly related to the level of production.
- Variable costs change in direct relation to volume of output.
- Total fixed costs do not change as the level of production increases.

© Colorado State University Extension. 9/92. Revised 3/12.

www.ext.colostate.edu



*P.H. Gutierrez, former Colorado State University Extension farm/ranch management economist and associate professor; N.L. Dalsted, Extension farm/ranch management specialist and professor; agricultural and resource economics. 3/2012

point is found faster and more accurately with the following formula:

$$B-E = F / (S - V)$$

where:

B-E = break-even point (units of production),

F = total fixed costs,

V = variable costs per unit of production,

S = savings or additional returns per unit of production, and the mathematical approach is best presented using examples.

Example 1

A farmer wants to buy a new combine rather than hire a custom harvester. The total fixed costs for the desired combine are \$21,270 per year. The variable costs (not counting the operator's labor) are \$8.75 per hour. The farmer can harvest 5 acres per hour. The custom harvester charges \$16.00 per acre. How many acres must be harvested per year to break-even?

$$\text{Fixed costs (F)} = \$21,270$$

$$\text{Savings (S)} = \$16/A$$

$$\text{Variable costs (V)} = \$8.75/\text{hr} / 5 \text{ A/hr} = \$1.75/A$$

$$B-E = \$21,270 / (\$16/A - \$1.75/A) =$$

$$\$21,270 / \$14.25/A = 1,493 \text{ Acres}$$

Example 2

Break-even analysis can be easily extended to consider other changes. If the farm operator can save two additional bushels of wheat per acre more than the custom harvester, what would be the break-even point if wheat is worth \$4/bushel?

$$\text{Additional income} = \$4/\text{bu} * 2 \text{ bu/A} = \$8/A$$

$$B-E = \$21,270 / (\$16/A + \$8/A - \$1.75/A) =$$

$$\$21,270 / \$22.25/A = 956 \text{ Acres}$$

Example 3

A farmer raising 1,200 acres of wheat per year considers purchasing a combine. How much additional return (to land, capital labor, management and risk) would result?

Additional return = (savings or additional income) - (fixed costs + variable costs)

$$\begin{aligned} \text{Additional profit} &= [\$16/A + (\$4/\text{bu} * 2 \\ &\text{bu/A})] * 1200 \text{ A} = \$21,270 + [(\$8.75/\text{hr} \\ &/ 5 \text{ A/hr}) * 1200 \text{ A}] = \$28,800 - \$23,370 = \\ & \$5,430 \end{aligned}$$

Thus, the farmer would generate another \$5,430 in additional return by purchasing the combine. A farmer harvesting only 900 acres would probably choose not to buy the combine because the acreage is below the break-even point of 956 acres. The farmer may want to evaluate the purchase of a smaller or used combine.

Additional Situations

Two additional situations are presented as follows:

Problem 1. If the fixed costs for the combine are \$12,000 per year, no additional yield is expected, variable costs are \$7 per hour and the farmer can combine 4 acres per hour, what is the new break-even point?

Problem 2. If 900 acres are harvested, what is the effect on the farmer's profits?

Solutions

$$\text{Fixed costs} = \$12,000$$

$$\text{Savings} = \$16/A$$

$$\text{Variable costs} = \$7/\text{hr} / 4 \text{ A/hr} = \$1.75/A$$

Problem 1:

$$B-E = \$12,000 / (\$16/A - \$1.75/A) =$$

$$\$12,000 / \$14.25/A = 842 \text{ Acres}$$

Problem 2:

$$\text{Additional profit} = (\$16/A * 900 \text{ A}) -$$

$$[\$12,000 + (\$7/\text{hr} / 4 \text{ A/hr} * 900 \text{ A} =$$

$$\$14,000 - \$13,575 = \$825 \text{ increase}$$

Appraisal of Break-Even Analysis

The main advantage of break-even analysis is that it points out the relationship between cost, production volume and returns. It can be extended to show how changes in fixed cost-variable cost relationships, in commodity prices, or in revenues, will affect profit levels and break-even points. Limitations of break-even analysis include:

- It is best suited to the analysis of one product at a time;
- It may be difficult to classify a cost as all variable or all fixed; and
- There may be a tendency to continue to use a break-even analysis after the cost and income functions have changed.

Break-even analysis is most useful when used with partial budgeting or capital budgeting techniques. The major benefit to using break-even analysis is that it indicates the lowest amount of business activity necessary to prevent losses.