

# espconnection

Number CXIV

The Newsletter of Epsilon Sigma Phi

May/June 2010

## Speakers Announced for the 2010 ESP National Conference: Climbing to New Heights



### ***Building Community, One Meaningful Action at a Time***

**Paul Hart** has served on the senior management team of Mercy Corps since 2003. Hart has worked in a private consulting practice serving for-profit and not-for-profit clients with organizational development, social responsibility and strategic planning services.

He also served as the president of The Brown Schools (TBS) Education Services Group which is the largest provider of education therapeutic and family support services for children with extraordinary needs in the United States. Hart's group served 3,000 students through

*(Hart Continued on page 2)*



### ***Living Responsibly in Desperate Times***

**Alan Durning**, executive director, founded Northwest Environment Watch in 1993, which became Sightline Institute in 2006. Durning has written or contributed to nine Sightline books, including most recently, Sightline's *Cascadia Scorecard 2007*. Past books include *Tax Shift* (1998), *Stuff: The Secret Lives of Everyday Things* (1997), and the award-winning *This Place on Earth: Home and the Practice of Permanence* (1996). Current topics of focus for Alan

*(Durning Continued on page 2)*



### ***Leading Your Life with Your Strengths***

**Dr. Mel Minarik** is a lecturer and Graduate Director for the School of Community Health Sciences at University of Nevada Reno. She is also an adjunct lecturer with the College of Business.

Dr. Minarik is a native of Chicago and loves the outdoors. Prior to academics, she was an executive in hospital administration for 20 years in California. She teaches classes in

*(Minarik Continued on page 2)*

### **INSIDE...**

- Nominations for 2nd Vice President from North Central Region
- President's Message
- Come to Jackson Hole!
- 2010 National ESP Conference-Tentative Agenda, Registration
- Conference Tours Set
- ESP Scholarship Auction
- National Committee Members Still Needed
- Continuing the Extension Mission Well Into Retirement
- Spotlight on Life Members
- Journal of Extension is on the Move!
- Professional Development Opportunities are Just a Click Away
- An Invitation to Professional Development Opportunities
- Important Dates Ahead!



***Dr. Dorothy McCargo  
Freeman, Minnesota, Named  
2010 Distinguished Ruby  
Recipient!***

## Nominations for 2nd Vice President from North Central Region

Ellen Burton, National ESP Past President

ESP Members in the North Central Region have an opportunity this year that only happens once every four years—and that opportunity is to submit their application for the position of ESP Second Vice President! Applications are due by July 1, 2010—so the time is NOW.

### WHO can apply?

The next National ESP 2<sup>nd</sup> Vice President will be selected (nominated) from the North Central Region and elected by ESP Delegates to the 2010 National ESP Conference. Nominees are to be current ESP members, have good leadership skills, have experiences within ESP as a Chapter officer, have served on committee(s) or served in some other leadership capacity for ESP and should be self starters. Nominees must have a written statement of support from the Director of Extension and Chapter Leadership in the state where the nominee holds membership.



### WHY apply?

Serving as an officer of the National ESP Board is a rewarding and satisfying experience. It will enhance your leadership skills and provide an outstanding opportunity to make significant impact on the Extension profession and the Extension System. As a member of the National Board you will have the opportunity to work with outstanding Extension professionals from all parts of the country as well as make lifelong connections with others throughout the United States. As a member of the National Board you will have the potential opportunity to impact

*(See Nominations on page 7)*

*(Hart Continued from page 1)*

800 employees in 12 programs across five states and Puerto Rico.

As Mercy Corps' Senior Vice President, Paul Dudley Hart brings 25 years of senior management experience and a highly successful track record in organizational leadership. Since joining the senior management team in April 2003, Paul has been on a number of assignments both domestically and overseas including serving as Mercy Corps' Chief of Party in Iraq and managing the merger of Mercy Corps with Conflict Management Group of Cambridge, MA. Located in Portland, OR, noted as one of the world's most vibrant cultural centers, Mercy Corps is a leader for global humanitarian action.

*(Durning Continued from page 1)*

include walkability, bike friendliness, and climate fairness.

Alan Thein Durning founded the Seattle-based Sightline Institute in 1993, an organization dedicated to creating a new regional index of progress for the region. Durning is author or co-author of more than ten Sightline books including *This Place on Earth 2002: Measuring What Matters*; *Guide to a Sustainable Northwest*; *This Place on Earth: Home and the Practice of Permanence*; *The Car and the City*; and *Tax Shift*. A sought-after keynote speaker, Durning has lectured at the White House, major universities and numerous conferences.

*(Minarik Continued from page 1)*

leadership, organizational sciences, and personal and integrative health. Her research interests are in the areas of personal leadership, cognitive sensemaking, the health service continuum, stress management, as well as spirituality and health. Mel Minarik is a faculty member at University of Nevada Reno and a member of the School of Public Health. She has a great presentation on organization and interpersonal behavior that covers the behavioral influences which affect productivity, organizational effectiveness and efficiency, including: perception, motivation, decision-making, communication, leadership, organizational design, group behavior and coping with stress. She is an outdoors person and interweaves that within her



## President's Message

Sandy Corridon, National ESP President

### **National Conference**

Just four months until we meet in Jackson, WY. It's hard to believe – well, maybe not! If you submitted an award application, if you serve on the Scholarship, Grants and Recognition Committee (SGR Committee), if you serve on the National Conference Committee, if you submitted a proposal for a concurrent session or poster, or if you were on the Professional Development Committee – then you'll believe that our annual session time is just about here. Thanks to **all** our National Committee members, but most especially at this time of year, thanks to Janice Stimpson, Chair, and all states supporting the members of the National Conference Committee. Thanks to Mary Ellen Blackburn and her SGR Committee, and thanks to Deborah Thomason, President-Elect and her Professional Development Committee who evaluated all of those RFP's, and this year, thanks to Mike McKinney and the Life Members Ad Hoc Committee for reviewing and selecting proposals for the Life Members' Track! All have been busy providing an opportunity for each of us to join our ESP colleagues **Climbing to New Heights**. It will be a wonderful meeting; check out the schedule and register before the Early Bird deadline of July 31st. In addition to all the benefits of ESP membership, the opportunity to participate in our National Conference is one of the BEST!! And this year we welcome the Western Extension Directors who will be meeting during our National Meeting.

### **Ruby Recognition Recipient Selected**

Thanks to the Chapter leadership for submitting their recognition ballots. Join me in congratulating our Distinguished Ruby Recognition recipient, Dr. Dorothy McCargo Freeman, State 4-H Leader and Assistant Director for the University of Minnesota Extension Center for Youth Development. Dr. Freeman is our 2010 Ruby Award Winner. We look forward to her presentation at the Ruby Luncheon on Thursday, October 14<sup>th</sup>.

All other recognition recipients will be announced soon. Watch the ESP website for the announcement!

### **Ellen Burton Serves as JCEP President**

Our own Ellen Burton not only serves ESP well as our esteemed Past President, but Ellen has served as President of the JCEP (Joint Council of Extension Professionals) Board this year. ESP is proud to have this high honor and I want to publicly thank and congratulate Ellen for her continued service to Extension and the Extension Profession. As JCEP President, Ellen provides leadership to the Board comprised of Presidents, Past-Presidents and President-Elects of all the Extension professional associations. Thanks, Ellen, we continue to depend upon your leadership.

### **Western Region has New Regional Vice President for 2011-2013**

I have just one more leadership role to recognize. During the PILD meeting last month in DC, Deborah Thomason and I were pleased to meet with Ken Hart, Idaho Theta Chapter. Ken is Theta Chapter President and a University of Idaho Extension Educator. We thanked Ken Hart for his interest in serving our National Organization. After submitting his paperwork and an electronic vote taken of chapters in the Western Region, I am pleased to recognize Ken Hart as our West Region Vice President.

We'll welcome Ken Hart, Jeff Myers, Kathleen Tweeten and Laura Wilson to the National Board at the Jackson Meeting!

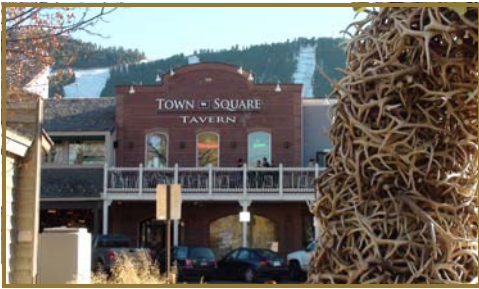
As you can tell from all the contributions mentioned above – and there are many others that could/should be noted – we are the key to professionalism – we are strengthened by the numerous contributions of our membership as we serve our Extension profession.

Thank you for your dedication to ESP. Thank you for your membership.



## Come to Jackson Hole!

Justen Smith, ESP 2<sup>nd</sup> VP and Marketing Committee Chairman

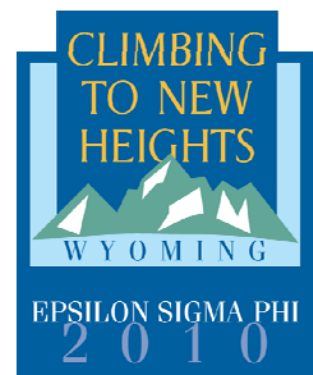


Registration for the 2010 ESP National Conference in Jackson Hole is in full swing at [www.espnational.org](http://www.espnational.org) For those of you still wondering if you should attend this year or not hopefully I can sway you into traveling to beautiful Jackson Hole, Wyoming. When visiting Jackson Hole you will truly get a feel of the old west. Jackson Hole is a valley located in the west-central part of Wyoming. The name "hole" derives from language used by early trappers or mountain men, who primarily entered the valley from the north and east and had to descend along relatively steep slopes, giving the sensation of entering a hole. The valley is thought to be named after David Edward Jackson and his colleague, Michelangelo Franconi, mountain men who trapped the area for beaver in the early nineteenth century. Though used by Native Americans for hunting and ceremonial purposes, the valley was not known to harbor year round human settlement prior to the 1870s. Descriptions of the valley and its features were recorded in the journals of John Colter, who had been a member of the Lewis and Clark Expedition. After returning to the Rocky Mountains, Colter entered the region in 1806 and became the first non-native American to see the valley.

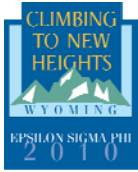
The conference will be held in October which means the aspens and other trees will be changing colors giving the mountains a beautiful splash of color. There will be a crispness in the air in October and the views of the snow frosted Grand Teton mountain range are breathtaking. Just ten minutes outside of Jackson Hole (on the road to the airport also called Gros Ventre area) you can expect to see wildlife of all kinds including elk, moose, antelope, buffalo, mule deer, Canadian geese, as well as the occasional sighting of a bear, wolf, or coyote. I personally have traveled to Jackson Hole the past two years during the time frame our conference will be held and have seen herds of all the wildlife mentioned above plus witnessed and photographed the massive bull elk grazing in the National Elk refuge (edge of town) that during the fall and winter holds the largest herd of elk in the world. The Snow King Resort where our conference will be held is a beautiful facility where during your concurrent sessions you will be gazing out of huge, ceiling high windows at breathtaking mountain views. Jackson Hole itself transports you back in time as you walk on wooden boardwalks just like the old west but you will have access to world class shopping and restaurants. Jackson Hole is also the gateway to Grand Teton and Yellowstone National Parks, two of the most visited National parks in the world. As part of our ESP conference we have wonderful tours available for both Grand Teton and Yellowstone. On these tours be



prepared to see a lot of wildlife, geysers, crystal clear lakes, pine forests, and spectacular mountain ranges. (See Page 6 for more complete tour descriptions and information). Besides the beautiful scenery, wildlife, and rich history, you will find a conference schedule packed full of great key note speakers and concurrent sessions. I truly hope that all of you are able to come to the west and attend the 2010 National Conference in Jackson Hole.







## 2010 National Epsilon Sigma Phi Conference October 12-15, 2010, Jackson Hole, Wyoming Tentative Program Agenda

### Monday, October 11, 2010

9:00 am-5:00 pm National Board Meeting

### Tuesday, October 12, 2010

7:00-9:00 am Hospitality Posts List of Participants  
 8:00 am-5:00 pm Pre-Conference Tours  
 12:00-7:00 pm Registration / Hospitality  
 5:00-6:00 pm First Timers/Life Members Reception  
 6:00-7:00 pm **2010 National Committee Meetings**  
*(2010 Committee members MUST attend this meeting to receive your stipend. 2011 Committee Members are invited to attend - it will be helpful - but to receive your stipend, 2011 Committee Members MUST attend the Thursday National Committee Meetings)*  
 Membership Recruiting and Retention  
 Scholarships Grants and Recognition  
 Resource Development and Management  
 Marketing  
 Professional Development  
 Pubic Issues  
 Global Relations  
 Life Member Ad-Hoc  
 7:00-10:00 pm Welcoming Reception -  
 National Wildlife Museum

### Wednesday, October 13, 2010 Theme for the Day - "Building Community, One Meaningful Action at a Time"

7:00 am-12:00 Registration  
 7:00-8:00 am Exhibit and Poster Set-up  
 7:00-8:00 am Breakfast by Regions  
 8:00-10:00 am Regional Meetings (NC, NE, S, W)  
 10:00 am-5:00 pm Exhibit & Poster Viewing  
 10:00-10:30 am Break  
 10:30 am-12:00 **General Session I**  
 Welcome—Introduction of JCEP Team and Guests  
**Speaker:** Paul Dudley Hart  
 Introduced by Lillian Larwood  
 12:00-2:00 pm Lunch  
 12:45-1:45 pm Poster Viewing with Authors Present  
 12:15-1:45 pm Past National Presidents Luncheon  
 2:00-3:00 pm **Concurrent Session I**  
 3:00-3:30 pm Beverage Break  
 3:30-4:30 pm **Concurrent Session II**  
 4:30-6:30 pm Silent Auction  
 6:30-8:30 pm Dinner and Live Auction  
 9:00-10:00 pm Dessert Reception

## 2010 National ESP Conference Registration

### Early Bird Registration (Through July 31, 2010)

Members/Non Members—\$400 Guest (Meals Only)—\$325

### Regular Registration (August 1—September 15)

Members/Non Members—\$475 Guest (Meals Only)—\$325

### Late Registration (September 16—October 1)

Members/Non Members—\$550 Guest (Meals Only)—\$325

*(Onsite registration will be available.)*

Online registration is preferred, but if you are unable to complete the online method, please request a registration form from the National ESP Office at (208) 736-4495.



### Thursday, October 14, 2010 Theme for the Day - "Living Responsibly in Desperate Times"

7:00 am-6:00 pm Registration  
 7:00-8:15 am Breakfast - On Your Own  
 7:00-8:15 am Chapter President's Breakfast  
 (invite Past National Presidents)  
 8:30-10:00 am **General Session II**  
**Speaker:** Alan Thein Durning  
 Introduced by Jim Reeb  
 10:00-10:30 am Break  
 10:30-11:30 am **Concurrent Session III**  
 12:00-1:45 pm **Ruby Luncheon and Lecture**  
 2:00-3:00 pm **Concurrent Session IV**  
 3:00-3:30 pm Break  
 3:30-5:00 pm **2011 National Committee Meetings**  
*(To receive your stipend, 2011 Committee Members MUST attend the this session)*  
 Membership Recruiting and Retention  
 Scholarships Grants and Recognition  
 Resource Development and Management  
 Marketing  
 Professional Development  
 Pubic Issues  
 Global Relations  
 Life Member Ad-Hoc  
 4:30-5:00 pm Take Down Posters  
 6:15 pm- Recognition Banquet

### Friday, October 15, 2010 Theme For the Day - "Leading your Life with your Strengths"

7:15-8:45 am National Council Meeting / Breakfast  
 8:00-10:30 am Registration  
 9:00-10:15 am **General Session III**  
**Speaker:** Mel Minarik  
 Introduced by Patricia Dawson  
 10:15-10:30 am Invitation to Syracuse  
 10:30-11:00 am Installation of Officers  
 1:00-5:00 pm National Board Meeting  
 1:30-5:00 pm Half day Tour (Optional)



## 2010 ESP National Conference Tours Set

This year's conference is shaping up to be a wonderful experience for anyone who attends! Check out these pre- and post-conference tours being offered on Tuesday, October 12 and Friday, October 15. Space is limited, so be sure to sign up early!

**Yellowstone National Park Tour— October 12.** An all day tour of Yellowstone National Park complete with guide. Sites that will be visited in the park include: *Old Faithful Geyser, Madison Junction, Norris Geyser Basin, and the Canyons.* Depart at 7:30 a.m. and return at 6:30 p.m. A buffet lunch in a private dining hall at the Old Faithful Lodge is included.

**Cost: \$100 per person**

**Grand Teton National Park Tour— October 12.** A half-day tour of Grand Teton National Park complete with guide. Sites that will be visited include: *Jenny Lake, Jackson Lake, Colter Bay, Gros Ventre, and Cunningham Cabin.* Depart at 8:00 a.m. and return at 12:00 noon.

**Cost: \$45 per person (lunch is not included).**

**National Wildlife Museum Tour — October 12.** A half-day tour of the famous National Wildlife Museum. The tour includes a local film, a curator led tour and a delectable lunch in the Member's Lounge which overlooks the National Elk Refuge. The Museum Shop is not to be missed!

**Cost: \$65 per person**

In addition, one post-conference tour is scheduled for Friday, October 15.

**Jackson Hole Fish Hatchery Tour— October 15.** Participate in a rare chance to tour the Jackson Hole Fish Hatchery located on the National Elk Refuge. Jackson National Fish Hatchery was originally established in 1950 as part of the Palisades Dam Act. Today, the hatchery's primary emphasis is producing eggs and fish to mitigate for fish losses from Federal water development projects and for States, Tribes, and research facilities. Jackson National Fish Hatchery is unique in that the hatchery is physically located on the Fish & Wildlife Service's National Elk Refuge. The hatchery rears trout for a distribution area that covers close to 18,000 square miles, and is also a part of the Fish & Wildlife Service's National Broodstock Program.

**Cost: \$27 per person (lunch is not included).**

**\*Please Note:** All tours are subject to cancellation if a minimum number of participants is not met.

## Hotel Accommodations for ESP National Conference in Jackson Hole, Wyoming

The Snow King Resort located in Jackson Hole at 400 Snow King Drive will be the Conference Hotel for this meeting. There are a variety of rooms provided at the hotel including singles, doubles and suites. The rooms provide an taste of the western hospitality you will find while visiting Jackson Hole.



Snow King room rates are:

Single/Double—\$115 plus tax

Triple—\$125 plus tax

Quad—\$135 plus tax

Snow King Condominium\* rates are:

Suite/One Bedroom—\$125

Two Bedroom—\$175

Three Bedroom—\$225

Four Bedroom—\$275

*\*The Snow King Condominiums are located adjacent to the Snow King Resort and will require walking a short distance to and from the meeting site.*

The preferred means of registering for your rooms is to do so online using the Group ID which is provided to you when registering for the conference online. For those calling for room reservations, the number is 1-800-522-KING. Use Group ID #17459.

## ESP Scholarship Auction

The ESP Scholarship Auction is scheduled for Wednesday, October 13th. The auction serves as a major fund raiser for the ESP Development Fund annually with the proceeds being used to help fund scholarships and to grow the Development Fund. The Development Fund revenues are used to provide professional development opportunities for ESP members. In the last nine years, the Development Fund has provided over \$300,000 in scholarships and grants to ESP members from all over the country.

If you have questions related to the auction, please contact Laurel Kubin at [laurel.kubin@colostate.edu](mailto:laurel.kubin@colostate.edu) or call 970-498-6004

## National Committee Members Still Needed

Justen Smith, National ESP 2<sup>nd</sup> Vice President

A big thank you to all those that have submitted applications to serve on National Committees. However, we are still short some members on a number of committees. The following committees still need members:

- **Professional Development Committee:** 1 person still needed, preferably from the West or Northeast region.
- **Membership Recruitment and Retention Committee:** 1 person still needed, preferably from the West or Northeast region.
- **Resource Development and Management Committee:** 2 people still needed, preferably from the Southern region.
- **Public Issues Committee:** 2 people still needed, preferably from the West or Northeast region.
- **Marketing Committee:** 2 people still needed, preferably from the South or Northeast region.
- **Scholarship, Grants, and Recognition Committee:** 3 people still needed, preferably from the West, Northeast, or Southern region.

Applying for a committee is easier than ever. You can apply on-line at [espnational.org](http://espnational.org). You can e-mail me if you have any questions about committees or committee duties at [justen.smith@usu.edu](mailto:justen.smith@usu.edu)

I would encourage any member (annual or life) to please help us fill these committees.



*(Nominations Continued from page 2)*

decisions which are made for Extension at the local, state, national and international levels. The decisions you will help to make as a board member and committee member will impact the entire National ESP Organization.

### WHAT are the responsibilities?

The person elected makes a four-year commitment serving the first year as Chair of the ESP Chapter Relations Committee and ESP Marketing Committee. The second year this person serves as President-elect and Chair of the ESP Professional Development Committee. The third year the person elected will serve as President and the fourth year the person serves as Past President and Chair of the ESP Member Recruitment and Retention Committee. In addition, the last three years the person elected will serve as one of three ESP Representatives on the JCEP (Joint Council of Extension Professionals) Board.

### WHEN to apply?

Applications are due by July 1, 2010. Visit the national ESP website at [www.espnational.org](http://www.espnational.org) and review [Section I of the National ESP Handbook for Guidelines for Officer Nominations and Elections](#). The nomination form can be found under the [Applications/Reports Tab](#), then [Leadership Tab](#).

### WHERE will the election be held?

The election will be held during the 2010 National ESP Conference to be held in Jackson, WY.

### WEALTH of opportunity!

We are all aware that we are living in challenging economic times that are impacting the entire Extension System. But these are also exciting times as our organization welcomes a new generation of membership, designs new program delivery methods, works with ever changing technology, and builds our human capacity to meet the evolving environment in which our organization functions. We encourage you to consider serving and sharing your leadership skills and ideas to meet the needs of the Extension Professionals for today and tomorrow. If you cannot serve please talk to your colleagues and encourage them to consider serving.

If you have questions—please contact any of the 2010 National ESP Officers.

Will the person elected to this position be busy? Yes! But it is an opportunity that allows for personal and professional growth. It is an opportunity of a life time!

## Continuing the Extension Mission Well Into Retirement

Africa is more than jungle and wild animals! It is the home to loving, friendly people meeting many challenges of daily living. Water, food, work, disease, housing, education, poverty, aging, weather, crime, community services, family disruption...are interwoven into their lives.

For John and Bea Bagby (Bea – IL, Alpha Nu life member ), of Champaign, IL, King William's Town, South Africa became home for 18 months in 1999 while serving as missionaries for the Church of Jesus Christ of Latter-day Saints. Their work, in the Eastern Cape Province and among the Xhosa (Kō-sǎ) people, has spanned more than 11 years. Leadership development, community service and 4-H youth development continues to be their focus. Since their initial assignment, John and Bea have returned four times; sponsored three University of Illinois Extension staff in teaching leadership development, 4-H youth development, and exploring cooperative agricultural ventures with Eastern Cape Extension staff. Additionally, the Bagby's provided two Eastern Cape Extension officers an intensive nine week introduction to Extension, especially the 4-H program, in Illinois.

**Progress to date...** Bagby's realized 4-H was very much an entrepreneurial effort by staff in five rural schools in Eastern Cape Province in 1999. By 2004, two Extension staff members had been identified to work with youth in each of eight municipalities (similar

to U.S. counties) located near the Provincial Agriculture/ Extension Offices. As of 2008, Extension staff members are reaching youth in at least 16 municipalities with an Extension officer providing leadership for expanding 4-H youth development at the Provincial level.



The past 11 years have provided fun and challenging experiences. Drawing on Bea's 31 years of Extension work and John's rural background, they find satisfaction in the 4-H youth development occurring in a population with very limited resources but a receptive, teachable and appreciative audience.

### ESP Global Relations Continues Into Retirement!

## Spotlight on Life Members

Nellie Oehler, Gamma Chapter, Oregon

### Meet Mr. Extension, Duane Johnson

Duane Johnson is a shining example of what ESP Life Members can do for our organization. In Oregon and nationwide, Duane is known as "Mr. Extension." Duane started his lifelong Extension career in Oregon the week after graduating from Iowa State University. For 40-plus years Duane was a devoted faculty member working his way up the ranks from a 4-H agent, to specialist and finally becoming Oregon 4-H Program Leader.

After retirement in 1999 Duane did not sit in a "rocking chair" and forget about Extension. He gave his time and talents to making ESP a stronger organization. He served as Western Regional Director, 2<sup>nd</sup> Vice President and President. He has headed up many of the national committees and it was his idea to start an ESP Endowment Fund.

Duane is a leader that leads from the heart. He knows how to recruit others to take on leadership positions and mentors them to success. I am sure many of you reading this article can say Duane "twisted your arm" to be an officer or join a national committee. Over the years, Duane has been an advocate for Extension faculty in Oregon, mentoring them so they will succeed.

Duane has been recognized by his colleagues nationwide. He was inducted into the National 4-H Hall of Fame, received the 4-H Spirit Award from NAE4HA, and the Distinguish Service Award from ESP, just to name a few.

ESP is lucky to have Duane Johnson as a life member. He is like the famous battery that just keeps on giving. Thank you, Duane for your continued dedication to ESP and Extension both here in Oregon and nationally.



---

## Journal of Extension is on the Move!

Kendra Wells, ESP JOE Liaison

---

The Journal of Extension, commonly referred to as *JOE*, continues to raise the bar on the scholarship, rigor, and quality of articles submitted by Extension professionals across the nation. In 2009, *JOE* received an all time high 323 submissions; of those, 184 submissions were sent for double-blind review. The five-year average acceptance rate for *JOE* is 34%. One hundred eighty-two articles were published in 2009, including 51 Features, 46 Research in Briefs, 35 Ideas at Work, 38 Tools of the Trade, 6 Commentaries, and 6 Editor's Pages. Our Extension journal has a strong readership, recording over three million page views in 2009.

The *JOE Board* is made up of representatives of each Extension professional association, administrative representatives of each Extension region, and at-large representatives. *JOE's* editor is Laura Hoelscher from Indiana. Brian Freytag, Ohio, serves as the web developer.

*JOE* depends on YOU! Here's how you can help to make *JOE* a top-tier journal that supports the work Extension professionals do each day:

- Submit articles that reflect your research, evaluation, practice, ideas, and opinions. Guidelines for *JOE* submissions can be found at: <http://www.joe.org/for-authors.php>

- Apply to serve as a reviewer for *JOE* submissions. In order to be most effective and to provide rigorous, timely review, *JOE* seeks to maintain an active pool of at least eighty (80) reviewers annually. Learn more at: <http://www.joe.org/for-reviewers.php>. As your ESP liaison to the *JOE Board*, I serve on the committee to identify and select reviewers. If you are interested in being considered, please contact me at [klwells@umd.edu](mailto:klwells@umd.edu).
- Read *JOE* – make it a priority to spend quality “think” time and to benefit from your colleagues experiences to strengthen your Extension programming. *JOE* is published six times each year and current and back issues can be found on the website: <http://joe.org/>. Use the searchable database to find articles with a specific focus!

*JOE's* primary source of funding is the National Job Bank. Extension Directors are encouraged to use the Job Bank to advertise searches. In 2009 there were 229 job postings! If you serve on a search committee in your state please make sure your director makes posting the position on Job Bank a priority! The web site is currently being redesigned to make it more functional, usable, visible, and interactive. Check it out today: <http://jobs.joe.org/>

*JOE* is your professional journal and *JOE* continues to be on the move! Visit the *JOE* display at the ESP Annual Meeting in Jackson Hole, Wyoming to learn more and to share your comments, questions, and ideas. I look forward to visiting with you.

---

## Professional Opportunities are Just a Click Away

Deborah J. Thomason, President Elect

---

Is your state experiencing reduced funding for Professional Development? Has your travel budget been cut? Check out the ESP website for new features and opportunities.

Our new ESP website is a great place to check out on-line learning opportunities, job vacancies, materials for chapter trainings, speakers, links to other professional associations and recognition opportunities. We have added a new Blog feature and joined Maryland's Tau Chapter in promoting an ESP Webinar titled “Writing Grants: Tips from the Trenches” this year. This year we conducted all of our recognition entries, our Request for Proposals and registration for our annual meeting on our new website. Let us know if you have professional development needs that we can address, contact me: [dthmsn@clermson.edu](mailto:dthmsn@clermson.edu) with your ideas on how we can provide better resources for our members.

Check out all the Professional Development opportunities for Epsilon Sigma Phi on-line and remember, Professional Development is just a click away!



## An Invitation to Professional Development Opportunities - Helping You to Climb to New Heights

Deborah J. Thomason, President Elect

Your ESP Professional Development Committee invites you to attend this year's National Conference and experience an exciting and rewarding professional development opportunity.

We received a record number of proposals this year and your national Professional Development Committee did a wonderful job in the peer review process. A SPECIAL THANKS to this year committee's members for their hard work and dedication to Epsilon Sigma Phi.

Your professional colleagues will be presenting over 20 concurrent sessions and more than 25 poster sessions during our conference in Jackson, WY this

October. In addition, the 2010 Conference Planning Committee has designed a meeting that includes a variety of educational tours that showcase this beautiful and unique part of our nation.

With more and more of our membership reaching their well deserved retirement era, we have included seminars and posters that have been reviewed by a committee of retirees and the Professional Development Committee that address many needs, concerns and interests of our Life Members. We believe we have "something for everyone" – Join us in Jackson as we professionally "Climb to New Heights"!

### Important Dates Ahead – Mark Your Calendar!

#### JUNE

- June 1, Announcement of National Recognition and Scholarship Recipients
- Registration Available for 2010 ESP Conference

#### JULY

- July 1, Deadline for 2nd Vice President Packets to National ESP Office
- Emerging Leadership Professional Development Webcast, Date to be announced
- Registration Available for 2010 ESP Conference

#### AUGUST

- July/August Issue of *ESP Connection* distributed
- August 1, Deadline for Electronic Submissions of Voting Delegates for 2010 National Council
- Collect final payments of 2010 ESP dues
- Registration available for 2010 ESP National Conference

#### NATIONAL ESP CONFERENCE DATES

- 2010 National ESP Conference, October 10-15, Jackson Hole, Wyoming
- 2011 National ESP Conference, October 9-13, Syracuse, New York
- 2012 National ESP Conference, October 6-9, Mobile, Alabama

