

**MAY 2026: 4-H [Fair Entry online](https://fairent.com/Fair/SignIn/24065) OPENS:**

<https://fairent.com/Fair/SignIn/24065>

**Every 4-H Member with All their Fair Classes must be fully entered, submitted, and paid for by June 8<sup>th</sup>, 2026**

When entering make sure to put a description of your exhibit: (examples: *Blue Dress, Red Rocket, Leather Belt with carved flowers, cedar wood bench, horseshoe gun rack, etc.*)

# Elbert County Fair 2026

## 4-H Exhibit Requirements

### **SATURDAY, JULY 25 & SUNDAY, JULY 26**

All General 4-H Project Exhibits must arrive with record book and be checked in ahead of judging day. When you drop off projects' members will receive an interview time to return on Monday, July 27<sup>th</sup> for Judging.

**SAT. & SUN: 10:00 AM-1:00 PM 4-H General Project Arrive & Check-in, Ag Building**

### **SATURDAY, JULY 25**

**NOTE CLOTHING PROJECTS:** Fashion Revue is a separate entry and judging. 9:00 AM 4-H Fashion Review Judging, Fellowship Hall (closed to the public) 4:00 PM 4-H Fashion Revue Public Showcase and Awards; Fellowship Hall

**10:00 AM-1:00 PM 4-H General Project Arrive & Check-in, Ag Building**

### **SUNDAY, JULY 26**

**NOTE rocketry members wanting to exhibit and fly will need two separate rockets and enter one in exhibits and a separate entry for rocket fly**

**ROCKET FLY 7:00 AM; Far North Yard of fairgrounds**

8:00 AM 4-H Horse Shows: Main Arena and Warm-up Arena

8:00 AM Check-in begins for 4-H Breeding Beef, Beef Barn

**10:00 AM-1:00 PM 4-H General Project Arrive & Check-in, Ag Building**

10:00 AM 4-H Swine Breeding Show; South Pavilion

11:00 AM 4-H Sheep Breeding Show; South Pavilion

Noon 4-H Breeding Goat Show; South Pavilion

2:00 PM 4-H Breeding Beef Show; Main Pavilion

3:00 PM Utility Goat Show; South Pavilion (check-in at 2:30 PM)

4:00 - 7 PM Optional 4-H Tack check-in for MARKET Beef, Swine, Sheep and Goat & Poultry Barns (no security provided) drive carefully!

### **MONDAY, JULY 27**

7:00 AM-10:00 AM 4-H Market Goat and Market Lamb Check-in

**9:00 AM-2:00 PM 4-H General Project Judging- By Appointment; Ag Building**

9:00 AM-2:00 PM Optional 4-H Tack check-in for MARKET Beef, Swine, & Poultry

6:00 PM 4-H Market Goat Showmanship followed by 4-H Market Goat Show

\*\*\*Please designate Market Sale Animals as soon as possible\*\*\*

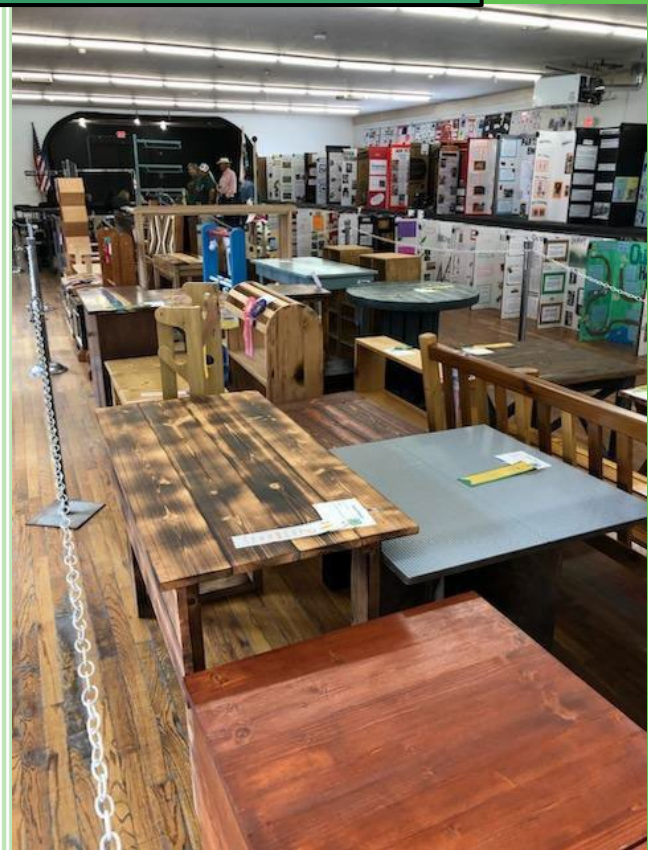
### **TUESDAY, JULY 28**

7:00 AM-11:00 AM 4-H Market Swine, 4-H Market Beef, Dairy Arrive and Vet Check, south entrance off Cheyenne Street.

12:00 PM Noon Livestock Exhibitors Meeting, Main Arena Grandstands (required) Exhibitors must attend and Parents should attend. (Premier Exhibitor testing after meeting)

1:00 PM-2:00 PM Market Beef Weigh-in; Large Animal Scale (brand papers required)

**5:00 PM 4-H Exhibit Champions Awarded in Ag Building (4-H Project Exhibits Sneak Peek)**



**2026 ELBERT COUNTY FAIR**  
**4-H EXHIBIT REQUIREMENTS**  
FOR GENERAL AND CONSUMER SCIENCES DIVISIONS

Use Control + click on items in the Table of Contents to jump to that section in the document.

TABLE OF CONTENTS

4-H Exhibit Superintendents .....	2
4-H Project Rules .....	3
Judging and Ribbon Awards.....	4
Display Board Guidelines for Fair 4-H Exhibits .....	5
Animal Science .....	6
<b>Cats – Display Board</b> .....	6
<b>Horseless Horse</b> .....	6
<b>Veterinary Science</b> .....	7
Communication, Arts, and Leisure Sciences.....	7
<b>Ceramics</b> .....	7
<b>Filmmaking</b> .....	11
<b>Global Citizenship</b> .....	12
<b>Leadership</b> .....	14
<b>Leathercraft</b> .....	16
<b>Photography</b> .....	19
<b>Scrapbooking</b> .....	26
<b>Visual Arts</b> .....	29
Family Consumer Science Projects .....	30
<b>Artistic Clothing</b> .....	30
<b>Cake Decorating</b> .....	33
<b>Clothing Construction</b> .....	41
<b>Foods and Nutrition</b> .....	45
<b>Food Preservation</b> .....	49
<b>Heritage Arts</b> .....	53
<b>Home Design and Décor</b> .....	59

Mechanical Sciences Projects .....	62
<b>Computer Science</b> .....	62
<b>Electricity</b> .....	63
<b>Metalworking</b> .....	65
<b>Model Rocketry</b> .....	67
<b>Robotics &amp; Engineering</b> .....	70
<b>Small Engines</b> .....	72
<b>Woodworking</b> .....	73
Natural Resources Projects .....	75
<b>Beekeeping</b> .....	75
<b>Entomology</b> .....	78
<b>Gardening</b> .....	80
<b>Outdoor Adventures</b> .....	81
<b>Shooting Sports</b> .....	82
<b>Sportfishing</b> .....	85
<b>Wildlife</b> .....	87

## 4-H Exhibit Superintendents

Lore Denson – Entry Superintendent  
 Mary Anderson – CSU Elbert County Extension Director

Sun Country 4-H Club – Exhibit Supply Move-in & Set-Up Crew  
 Rural Rustler 4-H Club Parents– Display and Ribbon Placement Team



Updated 05/15/2026

**Note: Jr., Int., Sr. are abbreviations for Junior, Intermediate, and Senior age divisions.**

ELBERT COUNTY University, U.S Department of Agriculture and Colorado counties cooperating. To simplify technical terminology, trade names or products and equipment occasionally will be used. No endorsement of product names is intended nor is criticism implied of products not mentioned.  
 ELBERT COUNTY University Extension is an equal opportunity provider. ELBERT COUNTY University does not discriminate on the basis of disability and is committed to providing reasonable accommodations. CSU's Office of Engagement and Extension ensures meaningful access and equal opportunities to participate to individuals whose first language is not English. <https://col.st/0WMJA>  
 ELBERT COUNTY University Extension es un proveedor que ofrece igualdad de oportunidades. ELBERT COUNTY University no discrimina por motivos de discapacidad y se compromete a proporcionar adaptaciones razonables. Office of Engagement and Extension de CSU garantiza acceso significativo e igualdad de oportunidades para participar a las personas quienes su primer idioma no es el inglés. <https://col.st/0WMJA>

# GENERAL AND CONSUMER SCIENCES

## 4-H Project Rules

1. Eligibility: Exhibitors in the divisions of this department must be bona fide members of Elbert County 4-H whose project work and records are certified and up-to-date and deemed eligible by the appropriate Extension specialist. In addition, exhibitors must be at least eight years of age, must not have reached their 19th birthday as of December 31 of the current enrollment year, and must satisfy other eligibility requirements (if specified) for a class to compete in that class.
2. The project work, including writing, must be the member's own work. If the work was not created by the 4-H member or if it was submitted as a representation of the member's work without proper acknowledgement that it was created by another, then it is considered plagiarism. **Sources must be cited. Plagiarism will result in disqualification.**  
Images used in a 4-H project should be a true representation accurate to real life. Images that are AI-generated in all display boards, project notebooks, or e-Records, etc. should be labeled as such. **AI-generated images or text must include a caption or label with this format:**  
**Image (or Text) generated by Name of Generative AI tool, developer, date created and link to the tool.** Examples:  
Image generated by *DALL-E*, Bing, March 31, 2026, <https://www.bing.com/images/create>  
Text generated by *ChatGPT*, OpenAI, March 7, 2026, <https://chat.openai.com/chat>  
For more information on how to cite AI-generated material go to <https://libguides.colostate.edu/ai/intro>.
3. 4-H members may enter only once in the same class.
4. Members must be enrolled in the project (which may be broken down into units, levels, or categories) in which they exhibit.
5. Only one exhibit in each class will be accepted from a member. Projects entered in the wrong class will be moved to the correct class when possible.
6. **In the case of projects that are to be taken sequentially, if a member enrolls in two units of the same project in the same year and shows mastery in a lower-level unit, they are expected to exhibit in the higher-level unit. Exceptions to this rule will be stated in applicable project's rules.**
7. 4-H e-Records may be completed in pencil, ink, or by computer. The choice will not affect judging.
8. Display boards must meet the specifications and should fold flat. The standardized display board size of 4ft. x 3ft. is to be used. **No sharp items including but not limited to blades, thumb tacks, fishing hooks, knives, etc. are allowed on display boards or as part of any other exhibit.**
9. Projects are divided into Junior, Intermediate, and Senior age groups. The age range for Juniors is 8–10, Intermediates is 11–13, and Seniors is 14–18 years as of December 31 of the current 4-H year.
10. **Exhibit entries will be done online in FairEntry.** The 4-H member is to enter each exhibit online with a description.
11. Each exhibit and binder/notebook (containing the e-Record and other materials) is to have a FairEntry label designating the following: exhibitor name, county name, department, division, class, and age. **The label needs to be on the upper right-hand front outside of the binder/notebook. An entry card printed from FairEntry needs to be on the exhibit (usually the back of the exhibit or on the flap).** Read special instructions about tags for some exhibits. For example, ceramics, clothing, leathercraft, heritage arts, etc. have specific instructions. All exhibits must be accompanied by a complete label and entry card. For security reasons, do not list the member address on projects.
12. Exhibit entries are to be entered by 12 pm on Monday, June 8, through FairEntry. Each member will be assigned a time to bring projects to State Fair on Tuesday, August 18. Judging will begin at 8:00am on Thursday and Friday, August 20-21. Exhibits will be taken down on Tuesday, September 8. All counties/areas need to arrive at 9:00am to help take down and sort exhibits by county in the three 4-H buildings before loading your exhibits into vehicles. Take down will start at 9:00am in the Exhibit Hall and continue through the Dining Hall and Auditorium until finished. The 4-H buildings will be swept,

closed, and locked by 1:00pm. Exhibits left after 1:00pm will be the responsibility of the county. Note: we can also use help counting ribbons left over for our ribbon inventory.

13. All Champion, Reserve Champion, and placing award exhibits must be displayed and remain on display for the duration of the Elbert County fair.
14. Exhibits will be released between 2-5pm on Sunday, **August 2, 2026**
15. Management will not be responsible for loss or damage to exhibits, although it will use all care to ensure their safety.
16. Unless otherwise stated in the project requirements, projects will be evaluated on the quality of the information completed in the e-Record (25 percent) and the quality of the exhibit (75 percent).

## Judging and Ribbon Awards

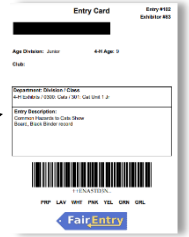
1. **Class Placement & Qualification:** Items entered in the wrong class that cannot be moved to the correct class will not be eligible for a placing ribbon. Exhibits not meeting requirements and standards will receive a qualifier ribbon only.
2. **Danish System of Grading:** 4-H exhibits, evaluating each exhibit on Quality standards and fulfillment of exhibit requirements: Blue=Excellent Quality, Red=Good Quality, White = Incomplete/Poor Quality.
3. **American Ranking Placing Ribbons:** First through Fourth place ribbons will be awarded with consideration of competition among exhibitors for ranking each class of exhibits that meet all standards and requirements.
4. **Champion & Reserve Champion Rosettes:** Rosette ribbons will be awarded for Champion and Reserve Champion from all First-place exhibits within a designated division or project area, and only if there are qualified exhibits in that area.
5. **Champion Awards** will be offered for qualified exhibit areas:

Champion Animal Sciences  
Champion Beginning Leathercraft  
Champion Advanced Leathercraft  
Champion Photography  
Champion Scrapbooking  
Champion Artist  
Champion Artistic Clothing  
Champion Clothing Construction  
Champion Heritage Arts  
Champion Beginning Cake Decorator  
Champion Cake Decorator Tip Work  
Champion Treat Decorator  
Champion Advanced Cake Decorator

Champion Foods Project  
Champion Mechanical Science  
Champion Metalwork Welding  
Champion Beginning Model Rocketry  
Champion Advanced Model Rocketry  
Champion Beginning Woodworking  
Champion Advanced Woodworking  
Champion Natural Resources  
Champion JR. Shooting Sports Display Board  
Champion JR. Shooting Sports Stand Alone Exhibit  
Champion SR. Shooting Sports Display Board  
Champion SR. Shooting Sports Stand Alone Exhibit

## Display Board Guidelines for Fair 4-H Exhibits

Display boards are a great way to share information, but when viewers walk by, they spend only 60-90 seconds looking at each display board. Make your board stand out by highlighting the main points of your project in a fun, interesting way. (4-H specialists will print and attach a FairEntry display card to each exhibit.)



Follow these guidelines to create a display board for the state fair.

**SHAPE**

Design your exhibit so information fits on the display. Remember, you have 1 large surface, and 2 smaller side wings. Do not use additional panels to **brace the board.**

4'

3'

**TEXT**

Make sure that all the text on your display is easy to read. Use a large font for the title, and smaller fonts for the headings and body text. Text must be readable from 3-5 feet away. Use large bold letters. Dark letters on a light background works best.

**SPACE**

Your display should only discuss one main topic. This will help it look neat and uncrowded.

**ATTACHMENTS**

Make sure pictures and objects are securely attached to the board. Use glue for pictures and paper, and consider wires, zip ties, or staples to attach bulkier items. **No sharp points please! Make sure they are taped over.** Do not attach items that are so heavy that your board can't stand or fold.

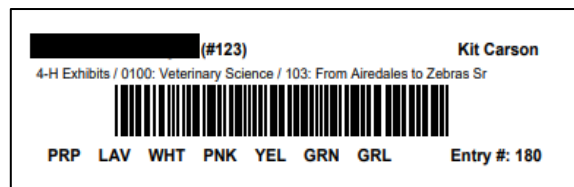
**SIZE**

Display boards for the state fair must measure 4 ft. wide x 3 ft. tall. They should be made of lightweight cardboard, but not poster board. Pre-cut boards are available at most craft and shopping centers. No part of your display may extend beyond these boundaries. **Do not use additional brace panels that may come with your board.**

### DISPLAY BOOKS

Your e-Record book should accompany your board. You may use 3-ring binders or other notebooks that will keep the pages securely inside. You may not use slider-type binders. Please place a label printed from FairEntry with the following information in the upper right-hand corner of the front cover: Name, County, Project Area, Class, 4-H Age Division. **Note: This label should also be used for cakes and foods projects and be placed on top of the cake board or plate.**

See example:



## Animal Science

### Cats – Display Board

Note: Please read 4-H Project Exhibit Rules on pages 3 and 4.

#### **PURR-FECT PALS—UNIT 1**

Class 101 Purr-fect Pals Unit 1 Jr.  
Class 102 Purr-fect Pals Unit 1 Int.  
Class 103 Purr-fect Pals Unit 1 Sr.

#### **CLIMBING UP—UNIT 2**

Class 104 Climbing Up Unit 2 Jr.  
Class 105 Climbing Up Unit 2 Int.  
Class 106 Climbing Up Unit 2 Sr.

#### **LEAPING FORWARD—UNIT 3**

Class 107 Leaping Forward Unit 3 Jr.  
Class 108 Leaping Forward Unit 3 Int.  
Class 109 Leaping Forward Unit 3 Sr.

All exhibits will consist of the following:

- A. A completed Cat Display Board e-Record presented in a sturdy binder/notebook. Note: Check with your county Extension office to see if you need to complete a Companion Animal e-Record (if showing your cat instead of doing a display board). **Display boards being judged at State Fair must have the Display Board e-Record and not the Companion Animal e-Record. This may differ from county fairs. Projects submitted with the incorrect e-Record may be disqualified.**
- B. A display board illustrating a topic investigated during the project year. The standardized display board size of 4 ft. x 3 ft. is to be used with 4-H projects. No additional items may be included in front of the display board.

### Horseless Horse

Note: Please read 4-H Project Exhibit Rules on pages 3 and 4.

#### **MAKING HORSE SENSE—UNIT 1**

Class 201 Making Horse Sense Unit 1 Jr.  
Class 202 Making Horse Sense Unit 1 Int.  
Class 203 Making Horse Sense Unit 1 Sr.

#### **HOOVES, HEALTH & HORSEMANSHIP—UNIT 2**

Class 204 Hooves, Health & Horsemanship Unit 2 Jr.  
Class 205 Hooves, Health & Horsemanship Unit 2 Int.  
Class 206 Hooves, Health & Horsemanship Unit 2 Sr.

#### **BREAKING GROUND—UNIT 3**

Class 207 Breaking Ground Unit 3 Jr.  
Class 208 Breaking Ground Unit 3 Int.  
Class 209 Breaking Ground Unit 3 Sr.

#### **BRUSHING UP ON HORSES—UNIT 4**

Class 210 Brushing Up on Horses Unit 4 Jr.  
Class 211 Brushing Up on Horses Unit 4 Int.  
Class 212 Brushing Up on Horses Unit 4 Sr.

All exhibits will consist of the following:

- A. The completed **Horseless Horse Manual** for the unit in which you are enrolled and e-Record presented in a sturdy binder/notebook.
- B. A display board illustrating a topic investigated during the project year. The standardized display board size of 4 ft. x 3 ft. is to be used with 4-H projects. No additional items may be included in front of the display board.

## **Veterinary Science**

**Note:** Please read 4-H Project Exhibit Rules on pages 3 and 4.

### **FROM AIREDALES TO ZEBRAS—UNIT 1**

- Class 301 From Airedales to Zebras Unit 1 Jr.
- Class 302 From Airedales to Zebras Unit 1 Int.
- Class 303 From Airedales to Zebras Unit 1 Sr.

### **ALL SYSTEMS GO!—UNIT 2**

- Class 304 All Systems Go! Unit 2 Jr.
- Class 305 All Systems Go! Unit 2 Int.
- Class 306 All Systems Go! Unit 2 Sr.

### **ON THE CUTTING EDGE—UNIT 3**

- Class 307 On the Cutting Edge Unit 3 Jr.
- Class 308 On the Cutting Edge Unit 3 Int.
- Class 309 On the Cutting Edge Unit 3 Sr.

**Note:** Turn in work only from the above manuals. Do not fill out Nebraska Vet Science materials (The Normal Animal, Animal Disease, and Animal Health). They are resources only.

All exhibits will consist of the following:

- A. A project manual (**From Airedales to Zebras** or **All Systems Go** or **On the Cutting Edge**) and Veterinary Science e-Record presented in a sturdy binder/notebook, including these items: manual with appropriate sections completed and e-Record and other attachments related to activities in the manual. Do a minimum of seven activities, any combination of manual or Booster Shot activities. These units may be completed in three years.  
Note: List the day, month, and year for the date of completed activities/booster shots on page 4 of the manual.
- B. A display board illustrating a topic investigated during the project year. The standardized display board size of 4 ft. x 3 ft. is to be used with 4-H projects. No additional items may be included in front of the display board.

## **Communication, Arts, and Leisure Sciences**

### **Ceramics**

**Note:** Please read 4-H Project Exhibit Rules on pages 3 and 4.

All Project Exhibit Rules:

1. One piece consists of no more than one item with lid (i.e., sugar bowl with lid). More than one piece is considered a set. Pieces in a set must be related.
2. **All work must be done by the member, including the cleaning of greenware.**
3. A member repeating any unit must learn new skills.
4. All ceramic pieces must be free for close inspection by the judge (i.e., **flowers should not be fastened with floral clay in a flowerpot; doll's clothing must be easily removed**). If not, the

piece/pieces will be disqualified. The entry card should be attached in a way to allow the judge to inspect all parts of the item (i.e., tied or taped on with a string).

5. **If the exhibit item is purchased bisqueware or greenware, it should already be cleaned and fired before judging and can be exhibited in Unit 3 through Unit 6.**
6. **For Unit 3 through Unit 6, purchased items and hand constructed items will be judged in separate classes.**
7. **It is suggested (not required) to do Units 1 and 2 in order. Units 3 through 6 may be taken in any order based on the member's interests. Members may exhibit in more than one unit, provided the member is enrolled in and has completed the requirements of each of the units they are exhibiting in. It is suggested (not required) to do Units 7 through 9 after completing Units 1 or 2 and any of the glaze units.**

All exhibits will consist of the following:

A. A completed Ceramics e-Record presented in a sturdy binder/notebook must be entered with the exhibit piece. Include two completed learning **activity** projects with information listed on the **Ceramics Activities Page**.

B. **Include the Ceramic Technique Page with at least three projects listed that you completed for the unit this year.** The technique **page** should have enough information included so the exhibitor or other people would be able to make a project very similar by following the instructions. You should have a technique **page** with each piece you exhibit. The technique **page** should include:

1. A list of all tools and brushes used. Sizes should be included, if applicable.
2. A list of brand names, numbers, and colors used.
3. A list of steps.
  - a. If the piece was bisque-fired before application of color and to what cone size or temperature.
  - b. How the color/colors were applied and number of coats. The cone size or temperature the color/colors were fired.
  - c. A list of other products used.

### **HAND-CONSTRUCTED—UNIT 1 Includes hand-constructed items using earthenware and stoneware.**

#### **Stoneware or Earthenware**

Class 401 Hand-Constructed Unit 1 Jr.  
Class 402 Hand-Constructed Unit 1 Int.  
Class 403 Hand-Constructed Unit 1 Sr.

All exhibits will consist of the following along with the e-Record (A and B above):

C. One functional or decorative art piece that is at least 4" in width or height and no larger than 12" in width or height using one of the three techniques listed. **Display items must be bisque fired only - NOT GLAZED.**

- Pinch Pots
- Draped Shape (can be done with coil or slab)
- Sagged Shape (can be done with coil or slab)

### **SLAB AND COIL CONSTRUCTED—UNIT 2 Includes slab or coil-constructed items using earthenware and stoneware.**

Class 404 Slab and Coil Constructed Unit 2 Jr.  
Class 405 Slab and Coil Constructed Unit 2 Int.  
Class 406 Slab and Coil Constructed Unit 2 Sr.

All exhibits will consist of the following along with the e-Record (A and B above):

C. One functional or decorative art piece that is at least 4" in width or height and no larger than 12" in width or height using one of the hand building techniques listed **without molds. Display items must be bisque fired only - NOT GLAZED.**

- Slab (examples include a box, vase, cup, wall hanging, sculpture, etc.)
- Coil (examples include a vase, bowl, pitcher, or cylinder, etc.)

**UNDERGLAZES—UNIT 3 – Includes underglazes on earthenware, stoneware, and porcelain.**

Class 407 Underglazes Hand Constructed Unit 3 Jr.  
 Class 408 Underglazes Hand Constructed Unit 3 Int.  
 Class 409 Underglazes Hand Constructed Unit 3 Sr.

Class 410 Underglazes Purchased Greenware/Bisque Unit 3 Jr.  
 Class 411 Underglazes Purchased Greenware/Bisque Unit 3 Int.  
 Class 412 Underglazes Purchased Greenware/Bisque Unit 3 Sr.

All exhibits will consist of the following along with the e-Record (A and B above):

C. One functional or decorative art piece that is at least 4" in width or height and no larger than 12" in width or height using underglaze techniques (i.e., brush stroke work, tinting specialty glazes, airbrushing, layering colors, etc.). The art piece may be either purchased greenware or a hand-constructed piece created by the member. Judging will primarily be on the quality of underglaze techniques.

- Enter the Underglazes Hand Constructed class if the exhibit item was made by the member.
- Enter the Underglazes Purchased Greenware/Bisque class if the exhibit item was purchased by the member.

**UNFIRED FINISHES—UNIT 4 – Includes unfired finishes on earthenware, stoneware, and porcelain.**

Class 413 Unfired Finishes Hand Constructed Unit 4 Jr.  
 Class 414 Unfired Finishes Hand Constructed Unit 4 Int.  
 Class 415 Unfired Finishes Hand Constructed Unit 4 Sr.

Class 416 Unfired Finishes Purchased Greenware/Bisque Unit 4 Jr.  
 Class 417 Unfired Finishes Purchased Greenware/Bisque Unit 4 Int.  
 Class 418 Unfired Finishes Purchased Greenware/Bisque Unit 4 Sr.

All exhibits will consist of the following along with the e-Record (A and B above):

C. One functional or decorative art piece that is at least 4" in width or height and no larger than 12" in width or height using unfired finish techniques. **If it is a functional piece, the application must be on the outside of the item to avoid potential toxic exposure from the materials used.** The art piece may be either purchased greenware or a hand-constructed piece created by the member. Judging will primarily be on the quality of unfired finish application.

- Enter the Unfired Finishes Hand Constructed class if the exhibit item was made by the member.
- Enter the Unfired Finishes Purchased Greenware/Bisque class if the exhibit item was purchased by the member.

**GLAZES—UNIT 5 – Includes glazes on earthenware, stoneware, and porcelain.**

Class 419 Glazes Hand Constructed Unit 5 Jr.  
 Class 420 Glazes Hand Constructed Unit 5 Int.  
 Class 421 Glazes Hand Constructed Unit 5 Sr.

Class 422 Glazes Purchased Greenware/Bisque Unit 5 Jr.  
 Class 423 Glazes Purchased Greenware/Bisque Unit 5 Int.  
 Class 424 Glazes Purchased Greenware/Bisque Unit 5 Sr.

All exhibits will consist of the following along with the e-Record (A and B above):

C. One functional or decorative art piece that is at least 4" in width or height and no larger than 12" in width or height using basic reactive glaze technique(s). The art piece may be either purchased greenware or a hand-constructed piece created by the member. Judging will primarily be on the quality of glaze application and firing techniques.

- Enter the Glazes Hand Constructed class if the exhibit item was made by the member.
- Enter the Glazes Purchased Greenware/Bisque class if the exhibit item was purchased by the member.

**OVERGLAZES—UNIT 6 – Includes overglazes on earthenware, stoneware, and porcelain.**

Class 425 Overglazes Hand Constructed Unit 6 Jr.  
Class 426 Overglazes Hand Constructed Unit 6 Int.  
Class 427 Overglazes Hand Constructed Unit 6 Sr.

Class 428 Overglazes Purchased Greenware/Bisque Unit 6 Jr.  
Class 429 Overglazes Purchased Greenware/Bisque Unit 6 Int.  
Class 430 Overglazes Purchased Greenware/Bisque Unit 6 Sr.

All exhibits will consist of the following along with the e-Record (A and B above):

C. One functional or decorative art piece that is at least 4" in width or height and no larger than 12" in width or height using overglaze techniques. The art piece may be either purchased greenware or a hand-constructed piece created by the member. Judging will primarily be on the quality of overglaze application and firing techniques.

- Enter the Overglazes Hand Constructed class if the exhibit item was made by the member.
- Enter the Overglazes Purchased Greenware/Bisque class if the exhibit item was purchased by the member.

**SCULPTURE—UNIT 7 – Includes sculpture using earthenware and stoneware.**

Class 431 Sculpture Unit 7 Jr.  
Class 432 Sculpture Unit 7 Int.  
Class 433 Sculpture Unit 7 Sr.

All exhibits will consist of the following along with the e-Record (A and B above):

C. One decorative art ceramic sculpture that is at least 4" in width or height and no larger than 12" in width or height. The project should be fully glazed and complete. If it is meant to be hung for display, there should be a string, wire, hook or other way to display the item hung as part of the piece.

**WHEEL THROWING—UNIT 8 – Includes wheel-thrown items using earthenware and stoneware.**

Class 434 Wheel Throwing Unit 8 Jr.  
Class 435 Wheel Throwing Unit 8 Int.  
Class 436 Wheel Throwing Unit 8 Sr.

All exhibits will consist of the following along with the e-Record (A and B above):

C. A set of two matching functional pieces, such as two vases, cups, bowls, or plates of equal height, width and shape. Pieces should be trimmed, fully glazed, and complete. The pieces should be at least 4" in width or height and no larger than 12" in width or height.

D. Seniors ONLY: In your story, share a business plan for selling items made using wheel throwing.

**PRODUCTION MOLDS—UNIT 9 – Utilizing porcelain slip.**

Class 437 Production Molds Unit 9 Jr.  
Class 438 Production Molds Unit 9 Int.  
Class 439 Production Molds Unit 9 Sr.

All exhibits will consist of the following along with the e-Record (A and B above):

C. A set of three to five articles produced using either a purchased slipcasting plaster mold or a slipcasting mold you made yourself. The articles must use the same mold to show consistency in production, but articles can be finished using different techniques. The project should be fully glazed and complete.

D. Seniors ONLY: In your story, share a business plan for selling items made using production molds.

## Filmmaking

Note: Please read 4-H Project Exhibit Rules on pages 3 and 4.

### ANIMATION

Class 501 Animation Jr.

Class 502 Animation Int.

Class 503 Animation Sr.

### NARRATIVE

Class 504 Narrative Jr.

Class 505 Narrative Int.

Class 506 Narrative Sr.

### DOCUMENTARY

Class 507 Documentary Jr.

Class 508 Documentary Int.

Class 509 Documentary Sr.

### PROMOTIONAL

Class 510 Promotional Jr.

Class 511 Promotional Int.

Class 512 Promotional Sr.

### VOICES OF 4-H HISTORY

Class 513 Voices of 4-H History Jr.

Class 514 Voices of 4-H History Int.

Class 515 Voices of 4-H History Sr.

### Descriptions of Filmmaking Project Categories:

1. Animation – A film created by techniques that simulate movement from individual images.
2. Narrative – A film which tells a story that you created. It can be based on fact or fiction.
3. Documentary – A film which presents information about a person, event, or process.
4. Promotional – This category is for films or public service announcements that are meant to publicize 4-H programs or some other cause that you are passionate about.
5. Voices of 4-H History – A historical perspective on 4-H. May be a narrative, documentary, animation, etc.

**For all videos a link must be provided, so the judge can view the video.**

All exhibits will consist of the following:

- A. Completed Filmmaking e-Record and binder including story board.
- B. The video must be less than 10 minutes in length.
- C. Make sure your video is in good taste (like G and PG ratings). Videos may be disqualified if deemed to have questionable content. The 4-H Code of Conduct must be followed.
- D. **A link must be provided to view the video.** Members must supply the following information:
  1. Name
  2. County
  3. Title

4. Class
5. 4-H Age
6. Short Description

## Global Citizenship

Note: Please read 4-H Project Exhibit Rules on pages 3 and 4.

### STUDY OF ANOTHER COUNTRY—UNIT 1

Class 601 Study of Another Country **Notebook** Unit 1 Jr.

Class 602 Study of Another Country **Notebook** Unit 1 Int.

Class 603 Study of Another Country **Notebook** Unit 1 Sr.

Class 604 Study of Another Country **Display Board** Unit 1 Jr.

Class 605 Study of Another Country **Display Board** Unit 1 Int.

Class 606 Study of Another Country **Display Board** Unit 1 Sr.

All exhibits will consist of one of the following exhibit formats:

- A. A completed Global Citizenship e-Record and: (Option 1) a sturdy three-ringed notebook including the following additional information:
1. Create an information sheet that explains the selected study topic and list the topic(s) studied (pages 6-9).
  2. Describe any demonstrations or public speaking experiences you had associated with global citizenship. Please be specific about audience, topic, visual aids, etc.
  3. Include a short story explaining what you learned from this study.

**OR**

(Option 2) An educational display board (standard display board size of 4 ft. by 3 ft.) covering what you learned from your study. Note: The display board could be a visual aid for your Global Citizenship demonstration or speech.

- B. List the resources you used throughout your project in either exhibit option.

### GLOBAL CHALLENGES—UNIT 2 (Int. and Sr. Only)

Class 607 Global Challenges **Notebook** Unit 2 Int.

Class 608 Global Challenges **Notebook** Unit 2 Sr.

Class 609 Global Challenges **Display Board** Unit 2 Int.

Class 610 Global Challenges **Display Board** Unit 2 Sr.

This unit provides senior 4-H members with the opportunity to study and present on current global issues that affect both local and international communities. Projects may focus on topics such as food insecurity, sustainable agriculture, clean water, climate change, global health, or other worldwide challenges. Members may choose to exhibit their work through a written research notebook or an educational display board, in addition to completing a Global Citizenship e-Record. This project encourages youth to connect global issues to their own lives, develop leadership skills, and share their learning with others through public presentations.

All exhibits will consist of the following:

- A. A completed Global Citizenship e-Record with the following information (required for **both** options):
1. Documentation of the project process from the Global Challenge Paper Guidelines manual (Pages 11-18) (research, activities, leadership roles).
  2. A research paper (3–5 pages, a word count of 1,500-2,500 words) on a selected global challenge and how it relates to food insecurity (examples: food desert, clean water, sustainable agriculture, climate change, refugee/migration issues, global health, etc.). Include your list of sources.

**B. One of the following exhibit formats:**

1. A sturdy three-ring notebook including a completed Global Citizenship e-Record with the following additional information:
  - Evidence of participation in a related event, activity, or leadership opportunity (such as the Colorado GROW Youth Institute, World Food Prize, or other program). Include photos, agenda, feedback received. **Note: Participation in the Colorado GROW Youth Institute is limited to Senior 4-H members only.**
  - Reflection on what was learned and how this challenge connects to citizenship, leadership skills learned or needed, or career/education goals. How did this change your perspective, what surprised you in your research?
  - Visual Aids - Minimum of 2 (Examples: Maps, charts or graphs, diagrams of proposed solution, photos).
  - Local to global connections (how this issue affects both the world and your local community.)
  - Steps to making effective change for your proposed solution or your local community. (Examples: A mock social media campaign, volunteering at a food bank, letter to policy makers, etc.)
  - Final Reflections - Key takeaways, what are you most proud of, would you continue this project?

**OR**

2. An educational display board (standard display board size of 4 ft. by 3 ft. is to be used for 4-H projects. See page 5 for Display Board Guidelines) No additional items may be included on top or in front of the display board. The display board should include:
  - Evidence of participation in a related event, activity, or leadership opportunity (such as the Colorado GROW Youth Institute, World Food Prize, or other program).
  - A clear title identifying the global challenge.
  - Visual overview of the challenge (causes, impacts, and possible solutions).
  - Visual Aids - Minimum of 2 (Examples: Maps, charts or graphs, diagrams of proposed solution, photos.)
  - Local to global connections (how this issue affects both the world and your local community).
  - Personal reflection section - steps to effective change, final reflections.
  - Properly cited resources displayed on the board.

**HOST A DELEGATE FROM ANOTHER COUNTRY—UNIT 3**

Class 611 Host a Delegate from Another Country **Notebook** Unit 3 Jr.  
Class 612 Host a Delegate from Another Country **Notebook** Unit 3 Int.  
Class 613 Host a Delegate from Another Country **Notebook** Unit 3 Sr.

Class 614 Host a Delegate from Another Country **Display Board** Unit 3 Jr.  
Class 615 Host a Delegate from Another Country **Display Board** Unit 3 Int.  
Class 616 Host a Delegate from Another Country **Display Board** Unit 3 Sr.

All exhibits will consist of the following:

- A. A sturdy three-ring notebook including a completed Global Citizenship e-Record with the following additional information:
  1. Preparation for your Exchangee's Arrival **section** of manual.
  2. The Arrival **section** of manual
  3. During the Stay **section** of manual
  4. After Departure **section** of manual
  5. Resources **section** of manual

**OR**

An educational display board (standard display board size of 4 ft. by 3 ft.) illustrating what you learned from your experience covering the following information:

1. Preparation for your Exchangee's Arrival section of manual.
2. The Arrival section of manual
3. During the Stay section of manual
4. After Departure section of manual
5. Resources section of manual

- B. Provide information on at least one demonstration or public speaking experience that you gave on your global citizenship project. Please record this information on the Demonstration page in the e-Record. Be specific on audience, topic, visual aids, etc. Note: The display board could be a visual aid for your Global Citizenship demonstration or speech.

#### **INTERNATIONAL EXPERIENCE IN ANOTHER COUNTRY—UNIT 4 (Int. and Sr. Only)**

Class 617 International Experience In Another Country Unit 4 Int.

Class 618 International Experience In Another Country Unit 4 Sr.

Class 619 International Experience in Another Country Display Board Unit 4 Int.

Class 620 International Experience in Another Country Display Board Unit 4 Sr.

All exhibits will consist of the following:

- A. A sturdy three-ringed notebook including a completed Global Citizenship e-Record with the following information:
1. Before Departure section of manual
  2. During the Stay section of manual
  3. In-depth Observation section of manual
  4. Return to the United States section of manual
  5. Resources section of manual

**OR**

An educational display board illustrating what you learned from your experience covering the following information:

1. Before Departure section of manual
2. During the Stay section of manual
3. In-depth Observation section of manual
4. Return to the United States section of manual
5. Resources section of manual

- B. Provide information on at least one demonstration or public speaking experience that you gave on your global citizenship project. Please record this information on the Demonstration section in the e-Record. Be specific on audience, topic, visual aids, etc. Note: The display board could be a visual aid for your Global Citizenship demonstration or speech.

## **Leadership**

Note: Please read 4-H Project Exhibit Rules on pages 3 and 4.

Intermediate and Senior Leadership exhibits will consist of the following display options along with the e-Record information listed below each unit:

- A. A display board summarizing a skill area, activity, or leadership topic the member learned. **The standardized display board size of 4 ft. x 3 ft.** is to be used with 4-H projects. No additional items may be included in front of the display board.

**OR**

A video summarizing a skill area, activity, or leadership topic the member learned. The video must be less than 10 minutes in length and a link to view the video must be provided. (NOTE: The video option is not available for the LEADERSHIP SKILLS YOU NEVER OUTGROW Junior unit.)

- B. **All Leadership projects will be evaluated on the quality of the information completed in the e-Record (50 percent) and quality of the exhibit (50 percent).**

## LEADERSHIP SKILLS YOU NEVER OUTGROW

Class 701 Leadership Skills You Never Outgrow Jr.

Class 702 Leadership Skills You Never Outgrow Int.

All exhibits will consist of the following:

- A. A sturdy three-ring notebook including a completed Leadership e-Record with the following additional information:
  1. Complete at least one activity in the following sections of the manual and either place the pages or make copies of the pages to place in the e-Record:
    - a. Understanding Self
    - b. Communications
    - c. Getting Along with Others
    - d. Making Decisions
    - e. Plus, one of the exhibitor's choices from the manual
- B. A display board summarizing a skill area, activity, or leadership topic the member learned. **The standardized display board size of 4 ft. x 3 ft. is to be used with 4-H projects.** No additional items may be included in front of the display board.

## LEADERSHIP ROAD TRIP

Class 703 Leadership Road Trip Int.

Class 704 Leadership Road Trip Sr.

All exhibits will consist of the following:

- A. A sturdy three-ring notebook including a completed Leadership e-Record with the following additional information:
  1. Complete all 12 activities in the **Leadership Road Trip** manual and either include the manual or make copies of the pages and place in the e-record.
  2. Summaries or description of at least two Learning Experiences OR More Challenges from the Leadership Road Trip manual.

## PUT LEADERSHIP TO PRACTICE

Class 705 Put Leadership to Practice Int. (Club Leadership I Manual)

Class 706 Put Leadership to Practice Sr. (Club Leadership I Manual)

All exhibits will consist of the following:

- A. A sturdy three-ring notebook including a completed Leadership e-Record with the following additional information:
  1. Complete all 10 activities and Talking Over Activities in the Club Leadership I Manual and either include the manual or make copies of the pages and place in the e-record.
  2. Summaries or description of at least two Learning Experiences OR More Challenges from the Club Leadership I manual.
  3. Summary or description of at least one individualized goal to benefit your leadership skills.

## REFINING LEADERSHIP SKILLS

Class 707 Refining Leadership Skills Sr. (Club Leadership II Manual)

All exhibits will consist of the following:

- A. A sturdy three-ring notebook including a completed Leadership e-Record with the following additional information:
  1. Complete all 11 activities in the Club Leadership II Manual and either include the manual or make copies of the pages and place them in the e-Record.
  2. Summaries or description of at least two Learning Experiences OR More Challenges from the Club Leadership II manual.

3. Summary or description of at least two individualized goals to benefit your leadership skills.

## COMMUNITY SERVICE

Class **708** Community Service Project Sr. (My Hands for Larger Service Manual)

All exhibits will consist of the following:

- A. A sturdy three-ring notebook including a completed Leadership e-Record with the following additional information:
  1. Complete all 9 activities in the My Hands for Larger Service Manual and either include the manual or make copies of the pages and place in the e-Record.

## Leathercraft

**Note: Please read 4-H Project Exhibit Rules on pages 3 and 4.**

Project Exhibit Rules for All Units:

- A. Put name, age, and county on back of exhibit board and on tag attached to individual exhibit articles.
- B. Indicate in e-Record whether articles are made from a kit or are self-cut and designed by the member.
- C. A set means several things of the same kind that belong, or are used, together (i.e., six matching coasters, belt and buckle with matching designs, etc.).
- D. It is suggested (not required) to do Units 1-3 in order. Units 4-9 may be taken in any order. Members may exhibit in more than one unit, provided the member is enrolled in and has completed the requirements of each of the units they are exhibiting in.
- E. Definitions:
  1. Background dyeing—dyeing a solid color to the area tooled with the backgrounder.
  2. Carving—is where you cut into the leather (usually with a swivel knife) as part of the design you are tooling.
  3. Clear finish—is a top finish for tooling leather that has no color in it to protect leather. Some are waterproof, and some are not. For example, oil (no color added), leather finish spray or wipe (no color).
  4. Color shading—is using shades of color to make the design look more realistic. For example, use darker and lighter shades of a color on a tooled flower, animal, or figure of any kind to make it look more realistic. Paints will be accepted.
  5. Decorative swivel knife carving—is carving a design with lines and scrolls. Shading can be done with lines close together, called hatching.
  6. Figure carving—is the carving of figures (i.e., persons, animals, objects, etc.)
  7. Lace—is flat with a shiny side and a rough side.
  8. Matched set—is a set of two or more items with elements in common among each of the items. For example, bookmarks with the same border, a set of coasters with a variety of floral designs, a common theme among the items, etc.
  9. Pictorial carving—is the adding of background areas (i.e., trees, fence, mountains, grass, etc.) to the carving to make the picture complete. (Note: All pictures meant to be hung need to be complete with hardware to hang for display, whether framed or not.)
  10. Sewing thread—is round thread, waxed or not. (Sometimes a light cord is used like thread.)
  11. Solid color dyeing—is dyeing the whole project the same color. For example, tool a belt and then dye it all black or make a book cover and dye it all one color.
  12. Staining/Antiquing—will add a little color and bring out and enhance cuts, tooling and stamping. Usually, it is a cream that is applied and wiped off.
  13. Stamping/Tooling—is where you use impressions made from tools to form a design.
  14. Traditional carving—includes floral, scrolls, oak leaf, maple leaf type patterns.
  15. Two tone finish—is a technique where an area has a clear finish applied to some areas, which will give a two-tone effect after an additional antique finish is applied.

## INTRODUCTION TO LEATHERCRAFT AND CREATIVE STAMPING—UNIT 1

Class 801 Intro to Leathercraft & Creative Stamping Jr.

Class 802 Intro to Leathercraft & Creative Stamping Int.

Class 803 Intro to Leathercraft & Creative Stamping Sr.

All exhibits will consist of the following:

- A. Completed Leathercraft e-Record presented in a sturdy binder/notebook.
- B. Exhibit two completed leather articles. **Place the exhibit items on a board 12" x 18" x 1/8" or 1/4" (preferably pegboard)** to which items are attached by means of lacing or thread, so items are less likely to be misplaced during display.
- C. One each from categories below:
  1. One completed article or one matched set of articles with a creative stamping design on a single layer of leather. Examples: belt, bookmark, wrist bracelet, or set of coasters with matching elements.
  2. One completed article with a creative stamping design on at least two pieces of leather that are hand sewed together with lacing and/or thread stitching using whip stitch, running stitch, or saddle stitch. Examples: coin purse, knife sheath/case, simple purse, wallet. Pre-cut or self-cut kits are allowed.
- D. Apply a **clear finish** to complete your article.

**Not Permitted in Unit 1: Carving, color shading or dyeing, antiquing, or machine sewing.**

## BEGINNING LEATHER CARVING—UNIT 2

Class 804 Beginning Leather Carving Jr.

Class 805 Beginning Leather Carving Int.

Class 806 Beginning Leather Carving Sr.

All exhibits will consist of the following:

- A. Completed e-Record presented in a sturdy binder/notebook.
- B. Exhibit three samples and one article. Any floral pattern can be used as long as it uses all the required tools of Unit 2 within the design. **Exhibit board 12" x 18" x 1/8" or 1/4" (preferably pegboard)** to which items are attached by means of lacing or thread:
  1. Three samples with labels showing:
    - a. Sample 1: Use of swivel knife and camouflage tool.
    - b. Sample 2: Use of swivel knife, camouflage tool, pear shader, beveler, and veiner.
    - c. Sample 3: Use of swivel knife, camouflage tool, pear shader, beveler, veiner, seeder, backgrounder, and decorative cuts. **Note: The labels should reflect the tools used for each sample.**
  2. One completed article using tools and skills studied in Unit 2 with double loop lacing.
- C. Apply a clear leather finish to complete your article and sample 3 (optional for samples 1 and 2, so one could complete samples being exhibited later and then apply a finish).

**Not Permitted in Unit 2: Pictorial carving or figure carving (realistic animal and human figures), color shading or dyeing, antiquing, or machine stitching.**

## INTERMEDIATE LEATHER CARVING—UNIT 3

Class 807 Intermediate Leather Carving Jr.

Class 808 Intermediate Leather Carving Int.

Class 809 Intermediate Leather Carving Sr.

All exhibits will consist of the following:

- A. Completed Leathercraft e-Record presented in a sturdy binder/notebook.
- B. One completed article, matching set, or picture/wall hanging that includes at least one of the major skills: traditional carving, inverted carving, or silhouette carving techniques. (Note: All pictures or wall hangings meant to be hung need to be complete with hardware to hang for display, whether framed or not.)

- C. Clear finish, staining/antiquing, two tone finishes, and background dyeing are allowed in Unit 3. No machine stitching allowed. Any lacing and/or hand stitching may be used in this unit, though they are not required.

**Not Permitted in Unit 3: Pictorial carving or figure carving (realistic animal and human figures), color shading, solid color dyeing (only background dyeing is permitted), or machine stitching.**

#### **ADVANCED UNITS 4 – 9**

**Note:** The advanced units do not have to be taken in order. All pictures or wall hangings in units 4-8 meant to be hung need to be complete with hardware to hang for display, whether framed or not. Any dyeing, color shading, antique/stain, and finishing techniques may be used in units 4-9.

#### **ADVANCED LEATHER CARVING—UNIT 4**

Class 810 Advanced Leather Carving Jr.

Class 811 Advanced Leather Carving Int.

Class 812 Advanced Leather Carving Sr.

All exhibits will consist of the following:

- A. Completed Leathercraft e-Record presented in a sturdy binder/notebook.
- B. One completed article, matching set, or picture/wall hanging using one of the following techniques: advanced traditional carving, figure carving, pictorial carving, decorative swivel knife carving, embossing or filigree work.
- C. Any lacing, hand sewing, and/or machine sewing may be used in Unit 4, though they are not required.

#### **ADVANCED STAMPING—UNIT 5**

Class 813 Advanced Stamping Jr.

Class 814 Advanced Stamping Int.

Class 815 Advanced Stamping Sr.

All exhibits will consist of the following:

- A. Completed Leathercraft e-Record presented in a sturdy binder/notebook.
- B. One completed article, matching set, or picture/wall hanging using an advanced stamping design. Minimal carving is allowed for effect (i.e., use swivel knife to carve borders, letters, brands, etc.).
- C. Any lacing, hand sewing, and/or machine sewing may be used in Unit 5, though they are not required.

#### **SEWING LEATHER—UNIT 6**

Class 816 Sewing Leather Jr.

Class 817 Sewing Leather Int.

Class 818 Sewing Leather Sr.

All exhibits will consist of the following:

- A. Completed Leathercraft e-Record presented in a sturdy binder/notebook.
- B. One completed article, matching set, or garment made primarily by sewing leather. The focus of this unit is developing sewing construction skills. Judging will be based more on construction and sewing than on tooling and other techniques.
- C. Any hand sewing and/or machine sewing may be used in Unit 6.

#### **BRAIDING AND UN-TOOLED LEATHER—UNIT 7**

Class 819 Braiding and Un-tooled Leather Jr.

Class 820 Braiding and Un-tooled Leather Int.

Class 821 Braiding and Un-tooled Leather Sr.

All exhibits will consist of the following:

- A. Completed Leathercraft e-Record presented in a sturdy binder/notebook.
- B. One completed article, matching set or picture/wall hanging constructed with un-tooled leather using one or more of these leather art techniques: Lacing, braiding, expanding, sculpting, or molding leather. (Minimal tooling for effect, such as names, initials, or brands will be accepted.)
- C. Any lacing, hand sewing, and/or machine sewing may be used in Unit 7, though they are not required.

### **MASTER LEATHERCRAFT—UNIT 8**

Class 822 Master Leathercraft Jr.

Class 823 Master Leathercraft Int.

Class 824 Master Leathercraft Sr.

All exhibits will consist of the following:

- A. Completed Leathercraft e-Record presented in a sturdy binder/notebook.
- B. One completed article, matching set or picture/wall hanging using multiple leather working techniques.
- C. Any lacing, hand sewing, and/or machine sewing may be used in Unit 8, though they are not required.
- D. **Some examples of using multiple leathercraft techniques on a project include:**
  - 1. An article with a stamping design that included an area of figure carving.
  - 2. A carved picture with a stamped frame.
  - 3. A floral carving with areas of geometric stamping.
  - 4. A purse with basket stamping and an embossed horse head on the front flap.
  - 5. A belt with silhouette carved horses and a name in the back with filigree.
- E. The combinations of techniques are endless!

### **MAKING AND REBUILDING SADDLES—UNIT 9**

Class 825 Making and Rebuilding Saddles Jr.

Class 826 Making and Rebuilding Saddles Int.

Class 827 Making and Rebuilding Saddles Sr.

All exhibits will consist of the following:

- A. Completed Leathercraft e-Record presented in a sturdy binder/notebook.
- B. One completed saddle (a new build or rebuild of existing saddle). The leather may be either tooled or un-tooled and may be finished in any suitable fashion.
- C. Any lacing, hand sewing, and/or machine sewing may be used in Unit 9, though they are not required.

## **Photography**

**Note: Please read 4-H Project Exhibit Rules on pages 3 and 4.**

Project Exhibit Rules:

- A. For all units, submit photo material for the current unit being entered. Do not submit previous photos or records unless requested for an activity in the unit.
- B. Display photo may be up to **5" x 7"** in size. The photo must be mounted on a mat and suitable for hanging without additional frame. No other mounted materials (i.e., glass, wood, plastic, metal, etc.) can be used. The maximum size for the matted only picture is no larger than **8" x 10" (no frame or glass)**.
- C. All photos in the photo journal/notebook should be 4" x 6" unless otherwise indicated in the manual. If the photos do not fit on the page, add a page for the photo.
- D. **Display photo will be used to display at state fair so be careful when picking your best photo. Notebooks will not be displayed.**

- E. Photo Journal/Binder notebooks: Use a hardback, three-ring notebook up to three inches in size for all units. No posters or oversized books. **Do not use plastic covers on any pages in the unit.** All materials must fit within the notebook. Additional pages can be added as needed to exhibit your photos. **Notebooks will be judged but will not be displayed.**
- F. For photo exhibits in Units 1-4, follow the tips in the manuals. **Photos can be mounted on cardstock.** Members in Units 1-4 should use no editing tools unless required to do so by the specific activity in the manual. Refer to unit requirements for photo labeling template.
- G. For Units 5 and 6, members may edit photos, but at a limited capacity (i.e., cropping, basic retouches, color and tone adjustments, etc.) Please list a citation if photo editing tools are used. Refer to unit requirements for photo labeling template.
- H. Unit 5 Low Light Photography is not limited to only lightning photos. Youth can exhibit photos taken at night: moonlight photos, fireworks, night-time photos. Photos using long exposure and high speed can also be exhibited. Be sure to check out the exhibit requirements.
- I. Members in Unit 7 Advanced Photo Editing may edit photos in any manner and must cite photo editing tools according to the photo labeling template in that unit's requirements. Members are allowed to curate their own project experience by choosing what techniques listed in the manual they want to focus on. Members are not required to complete all techniques, but they must have a total of 20 demos (a pair of unedited and edited photos per page) with a total of 40 photos.

### Matting Photos Guidelines

Matting a photo means to put a border around it. Choose a color that brings out another color in the photo but is different than the background color. Light matte colors will help lighten a dark photo and a dark matte color will make the colors look deeper and richer. Matting adds dimension to compliment and accent the photo. Matting will help focus attention on the photos and add visual interest along with balance to the layout.

For county and state fair display, please select a photo that is 5" x 7" in size that is one of the photo techniques you are using within your unit (read specific requirements for each unit). The maximum size for the matted photo will be 8" x 10". These photos will be hung for display. Please attach string or some type of hanging mechanism for the photo to hang. Please do not put the photo in a frame.

Please attach to the back of your exhibit photo the following information:

- A. Member name
- B. Member county
- C. Subject
- D. Date photo **was** taken
- E. Notes

### PHOTOGRAPHY BASICS—UNIT 1

Class 901 Photography Basics Unit 1 Jr.

Class 902 Photography Basics Unit 1 Int.

Class 903 Photography Basics Unit 1 Sr.

All exhibits will consist of the following:

- A. Completed Photography Unit 1 e-Record. Include the following in your story: what camera you used this year (brand name, film size, etc.), how you stored your pictures and why you picked your Display Photo. **(Also include photos of you working on your project in the e-Record photo page.)**
- B. Completed Photo Journal/Binder. All photos must be labeled as follows:
  1. Camera used
  2. Activity #
  3. Photo # (left to right and top to bottom)
  4. Subject
  5. Date photo **was** taken

- C. Best Photo – 5x7 matted and ready to hang (no glass or frame).
- D. You will include the following photos (total of 27 photos) in your photo journal/binder. Photos may be mounted on cardstock with reference to activity.
1. Activity 1 – 2 photos:
    - a. 1 zoomed in and 1 zoomed out
  2. Activity 2 – 4 photos:
    - a. 2 landscape view – 1 photo not using a tripod and 1 photo using a tripod
    - b. 2 portrait view – 1 photo using a tripod and 1 photo not using tripod
  3. Activity 3 – 6 photos:
    - a. 3 photos taken outdoors – 1 at noon, 1 at 4pm and 1 at 8pm
    - b. 3 photos taken indoors – 1 at 10am, 1 at noon and 1 at 2pm

Note – The goal of this activity should be learning how to use light effectively to capture the subject using correct composition.
  4. Activity 4 – 3 photos:
    - a. 1 photo with an outdoor shadow
    - b. 1 human shadow pose
    - c. 1 large shadow of choice
  5. Activity 5 – 4 photos:
    - a. 4 photos using the same object of choice, captured with different directions of light; use flashlight or similar to create lighting.
      - i. Object with front lighting
      - ii. Object with back lighting
      - iii. Object with side lighting
      - iv. Object with top lighting
  6. Activity 6 – 2 photos:
    - a. Choose from options 1, 2 or 3 on page 32 in the manual and post one photo with flash and one without.
  7. Activity 7 – 3 photos (can be same subject):
    - a. 1 photo representing use of background
    - b. 1 photo representing use of middle-ground
    - c. 1 photo representing use of foreground

Note – each photo should have an obvious focal point using the above to create a photo that compliments your subject.
  8. Activity 8 – 3 photos:
    - a. 1 photo of friend with long or body shot
    - b. 1 photo of friend with head shot
    - c. 1 photo of friend with close up

Note – These photos should demonstrate the correct use of zoom or moving closer or further to the subject to achieve the correct composition.

## PHOTOGRAPHY BASICS—UNIT 2

Class 904 Photography Basics Unit 2 Jr.

Class 905 Photography Basics Unit 2 Int.

Class 906 Photography Basics Unit 2 Sr.

All exhibits will consist of the following:

- A. Completed Photography Unit 2 e-Record. Include the following in your story: what camera you used this year (brand name, etc.), how you stored your pictures and why you picked your Display Photo. **(Also include photos of you working on your project in the e-Record photo page.)**
- B. Completed Photo Journal/Binder. All photos must be labeled as follows:
  1. Camera used
  2. Activity #
  3. Photo # (left to right and top to bottom)
  4. Subject

5. Date photo **was** taken
- C. Best Photo – 5x7 matted and ready to hang (no glass or frame).
- D. You will include the following photos (total of 31-33 photos) in your photo journal/binder. Photos may be mounted on cardstock with reference to activity.
  1. Activity 9 – 4 photos:
    - a. 2 photos with clutter (more than 3 items other than focal point)
    - b. 2 photos uncluttered – use same focal point for 2 pictures (i.e., focal point tree – clutter and uncluttered; focal point friend – cluttered and uncluttered)

Note – Both sets of photos should combine all composition elements learned in the First year of this unit with the overall goal of reducing clutter in the background of the photographs.

  2. Activity 10 – 4 photos:
    - a. 4 photos of same subject -1 taken from each position
      - i. On stomach – aiming at ground level
      - ii. On back – aiming up
      - iii. Leaning over – aiming down
      - iv. Sideways – aiming directly ahead
  3. Activity 11 – 4 photos:
    - a. Display 4 photos demonstrating your 4 favorite special effect techniques listing in the manual (choose from plant growing, balancing act, ceiling walking and “underwater”)
  4. Activity 12 – 2 photos:
    - a. 1 selfie
    - b. 1 selfie with 3 or more people (including yourself)
  5. Activity 13 – 6 photos:
    - a. 2 action photos
    - b. 1 photo of a person
    - c. 1 photo of a place
    - d. 1 photo of a thing/still-life
    - e. 1 photo of an animal
  6. Activity 14 – 3-5 photos:
    - a. 3 to 5 photos displayed in order to tell a story

Note – Plan out your story with a storyboard and include this in your exhibit
  7. Activity 15 – 4 photos:
    - a. 4 black and white photos, keeping in mind the rules of composition and lighting to produce creative photos
  8. Activity 16 – 4 photos:
    - a. Choose 4 of your favorite photos taken during your entire time in Photography Basics (including the First and Second Units). These can be photos you have used for exhibit or photos that you took while experimenting with different photography techniques. Using the Photo Scorecard on page 79, evaluate your own photography and include your evaluation with your exhibit.

### PHOTOGRAPHY— UNIT 3 (NEXT LEVEL)

Class 907 Next Level Photography Unit 3 Jr.

Class 908 Next Level Photography Unit 3 Int.

Class 909 Next Level Photography Unit 3 Sr.

All exhibits will consist of the following:

- A. Completed Photography Unit 3 e-Record. Include the following in your story: what camera you used this year (brand name, etc.), how do you store your pictures and why did you pick your Display Photo pictures. **Also include photos of you working on your project in the e-Record photo page.**
- B. Completed Photo Journal/Binder. All photos must be labeled as follows:
  1. Camera used
  2. Activity #

3. Photo # (left to right and top to bottom)
  4. Subject
  5. Date photo **was** taken
- C. Best Photo – 5x7 matted and ready to hang (no glass or frame).
- D. You will include the following photos (total of 31-32 photos) in your photo journal/binder. Photos may be mounted on cardstock with reference to activity.
1. Activity 1 – 2 photos:
    - a. 2 photos using different lenses for each photo
  2. Activity 2 – 2 photos:
    - a. 2 photos using (2) special effects from the suggestions on page 16, or special effect lenses.
  3. Activity 3 – 4 photos:
 

Note - 4 photos, each of a different subject. Choose from the following: landscape, buildings, monuments, people, still life, close ups for details

    - a. 2 photos demonstrating hard light
    - b. 2 photos demonstrating soft/diffused light
  4. Activity 4 – 2 photos:
    - a. Best reflection photos that have good composition
  5. Activity 5 – 2 photos without using flash to convey mood:
    - a. 1 photo using artificial light
    - b. 1 photo using natural light
  6. Activity 6 – 2 photos:
    - a. 1 photo demonstrating rule of thirds in landscape view
    - b. 1 photo demonstrating rule of thirds in portrait view
  7. Activity 7 – 2 photos:
    - a. 1 photo demonstrating golden triangle using transparent template
    - b. 1 photo demonstrating golden rectangle using transparent template
  8. Activity 8 – 3 photos:
    - a. 3 photos of different subjects shooting from different angles and viewpoints
  9. Activity 9 – 2 photos:
    - a. 2 photos using composition elements and negative space in the photo to tell the story
  10. Activity 10 – 2 photos:
    - a. 2 candid photos
  11. Activity 11 – 1 photo:
    - a. 1 photo that fills the entire frame of the photo with a piece of the subject
  12. Activity 12 – 1 photo:
    - a. 1 panorama photo
  13. Activity 13 – 2 photos:
    - a. 1 photo that shows warm colors
    - b. 1 photo that shows cool colors
  14. Activity 14 – 4 photos:
    - a. 4 photos with a purpose
- E. Each photo should have a specific purpose behind it. Be sure to use the skills and techniques learned so far during your units to take quality photos for this activity.

#### **PHOTOGRAPHY—UNIT 4 (MASTERING PHOTOGRAPHY)**

Class 910 Mastering Photography Unit 4 Jr.

Class 911 Mastering Photography Unit 4 Int.

Class 912 Mastering Photography Unit 4 Sr.

All exhibits will consist of the following:

- A. Completed Photography Unit 4 e-Record. Include the following in your story: what camera you used this year (brand name, etc.), how do you store your pictures. **Also include photos of you working on your project in the e-Record photo page.**

- B. Completed Photo Journal/Binder. All photos must be labeled as follows:
  - 1. Camera used
  - 2. Activity #
  - 3. Photo # (left to right and top to bottom)
  - 4. Subject
  - 5. Date photo was taken
- C. Favorite Photo – page 7 Mastering Photography Book 3
- D. Posterboard Photo Joiner (Activity 13) - This will be your exhibit item with your e-record, favorite matted photo and photo journal/binder which includes the photos from the following activities.
- E. You will include the following photos (total of 30 photos) in your photo journal/binder. Photos may be mounted on cardstock with reference to activity.
  - 1. Activity 1 – 2 photos:
    - a. 1 photo using 1/250 f8 of a bright scene
    - b. 1 photo using 1/250 f8 of a dark scene
  - 2. Activity 2 – 2 photos:
    - a. 1 photo using small f-stop
    - b. 1 photo using large f-stop
  - 3. Activity 3 – 2 photos:
    - a. 2 night photos using correct aperture
  - 4. Activity 4 – 1 photos:
    - a. 1 photos with the subject backlit with the main subject in the foreground
  - 5. Activity 5 – 3 photos:
    - a. Silhouette in nature
    - b. Silhouette taken indoors
    - c. A silhouette of your choice
  - 6. Activity 6 – 1 photo:
    - a. 1 photo using either geometric shapes or interesting framing
  - 7. Activity 7 – 2 photos:
    - a. 1 photo that represents harmony
    - b. 1 photo that represents discord
  - 8. Activity 8 – 4 photos:
    - a. 4 still life photos that demonstrate similar themes, similar colors and different lighting
  - 9. Activity 9 – 4 photos:
    - a. 4 portrait photos with different poses
  - 10. Activity 10 – 4 photos of different subjects using macrophotography:
    - a. 1 photo representing symmetry/asymmetry
    - b. 1 photo representing pattern/texture
    - c. 1 photo representing shape/form
    - d. 1 photo representing visual rhythms
  - 11. Activity 11 – 2 photos:
    - a. 2 action photos
  - 12. Activity 12 – 2 photos:
    - a. 2 photos showing either astrophotography, underwater or Infrared techniques
  - 13. **OPTIONAL** Activity 13: - 1 photo of joiner
    - a. Make a poster board joiner using a minimum of 40 photos

### **PHOTOGRAPHY—UNIT 5 (LOW LIGHT)**

Class 913 Low Light Photography Unit 5 Jr.

Class 914 Low Light Photography Unit 5 Int.

Class 915 Low Light Photography Unit 5 Sr.

All exhibits will consist of the following:

- A. Completed Photography Unit 5 e-Record with emphasis on your challenges and accomplishments in your story. Include photos in the e-Record photo page of you working on your project.

- B. All photos must be labeled as follows in your photo journal/binder:
  1. Camera used
  2. Exposure details
  3. Photo # (left to right and top to bottom)
  4. Date photo was taken
  5. Notes (If you used Artificial Intelligence (AI) in any way, you MUST provide a brief explanation of how you used AI to manipulate your image.)
- C. One 5"x7" exhibit photo mounted on a 8"x10" picture mat. No other mounted materials (i.e., glass, wood, plastic, metal, etc.) can be used.
- D. The exhibit photo can be taken from any of the categories that are listed in the manual.
- E. Your portfolio of at least twenty 4"x6" prints: photos that you took while doing the project are included inside your Photo Journal/Binder.

### PHOTOGRAPHY—UNIT 6 (ADVANCED)

Note: This unit is for those 4-H members who have advanced photography experience (i.e. creative darkroom work, publishing, careers, etc.).

Class 916 Advanced Photography Unit 6 Int.  
 Class 917 Advanced Photography Unit 6 Sr.

All exhibits will consist of the following:

- A. Completed Photography Unit 6 e-Record with emphasis on accomplishments in your story. Include photos in the e-Record photo page of you working on your project.
- B. All photos must be labeled as follows in your photo journal/binder:
  1. Photo #
  2. Subject
  3. Date photo was taken
  4. Notes (If you used Artificial Intelligence (AI) in any way, you MUST provide a brief explanation of how you used AI to manipulate your image.)
- C. Include the following information on the Advanced Photography Unit 6 Information page.
  1. Goals
  2. Plans
  3. Accomplishments
  4. Evaluation
- D. Photos should show your progress with notes included on each label. Notes should include any relevant information you would like people to know about your pictures. This could include exposure information, a fun fact, something that challenged you, or the process/story of how you captured the image.
- E. Photo Journal/Binder notebook which illustrates achievements. The number of pictures you use should be based on your project goals. Try to aim for at least 30 pictures and no more than 70.
- F. Display photo may be up to 5" x 7" in size but not larger than 8" x 10" matted. This photo will be used for displaying and must be matted.
- G. **Project will be evaluated on quality of content in the written statement and completion of e-Record (50 percent) and quality of content in notebook (50 percent).**

### PHOTOGRAPHY—UNIT 7 (DIGITAL IMAGE EDITING)

Note: This unit is for Intermediate and Senior 4-H members who have used advanced photo editing tools, such as Adobe Lightroom (*preferred for this unit*), Fotor, Affinity Photo, Artificial Intelligence applications or other photo editing tools, to enhance or edit their project photos. **If photo editing is used in the member's project, they must be entered in the Digital Image Editing class.**

Class 918 Digital Image Editing Unit 7 Int.  
 Class 919 Digital Image Editing Unit 7 Sr.

All exhibits will consist of the following:

- A. Completed Photography Unit 7 e-Record with emphasis on accomplishments in your story. Include photos in the e-Record photo page of you working on your project.
- J. A "Demo Gallery," which is your Photo Journal/Binder notebook which illustrates achievements. The Demo Gallery shows the original photo you took alongside the same image that was edited. Your Demo Gallery should include twenty demos, for a total of 40 photos. The skills used in editing your photos should be based on your project goals. Members are not required to complete all techniques, but they must have a total of 20 demos (a pair of unedited and edited photos per page) with a total of 40 photos.
- B. A display photo that is a 5" x 7" print with an 8" x 10" matted-only frame. This photo should equally demonstrate your photography and photo editing skills. A copy of the unedited version of this display photo should also be included in your Journal/Binder.
- C. Your display photo must be labeled as follows on the back of the matted photo:
  1. Name
  2. County
  3. Editing Application
  4. Technique Used
  5. Notes
- D. Unlike past units, you will not be labelling each individual photo, but rather each demo page that includes the two photos used for each activity. In your Photo Journal/Binder, each demo page should list:
  1. Editing Application
  2. Demo Number
  3. Technique Used
  4. Additionally, please note which of the two photos on the page is the original and which is the edited copy. Also, if you used Artificial Intelligence (AI) in any way, you MUST provide a brief explanation of how you used AI to manipulate your image.

## COLORADO 4-H DIGITAL PHOTO CONTEST

Open to all 4-H members. Requirements will be in the [Contest Requirements](#) document. 4-H members will submit their entries through FairEntry.

## Scrapbooking

Note: Please read 4-H Project Exhibit Rules on pages 3 and 4.

- A. Youth may exhibit in one or all classes that they choose.
- B. Members who are exhibiting in several classes may copy their e-Record. Each exhibit (class) must have an e-Record. Be sure to highlight what you are exhibiting in your e-Record. Story and pictures must be unit specific.
- C. **Members are required to learn/practice the number of techniques required for their age group on the Technique Reflection Page appropriate for their project in the e-Record. They are not required to use the techniques in their exhibit. However, evidence of having learned or practiced those techniques must be in the e-Record, either the piece itself, or a photo of it. The techniques learned and/or practiced should be documented on the Technique Reflection Page.**
- D. All members will need to complete the Technique Reflection Page in Record Book with designated number of techniques based on age. **Required activities to include in record book: Jr.: 1 or more, Int.: 2 or more; Sr.: 3 or more.** Be sure to explain what you learned, how you learned it, and if you included them in the final project. Examples of techniques not used in the final project are to be included in record book, either a picture or actual technique.
- E. Examples of techniques that can be used may include:
  1. Stickers or Die Cuts
  2. Tearing or cutting
  3. Double Photo Matting

4. (2) Enlarged Photos (minimum size 5 x7); one must be black and white or sepia.
5. Inking/Stamping/Coloring
6. Create a border
7. Fibers
8. Buttons or beads
9. Eyelets or brads
10. Rub-ons or embossing
11. Craft punches
12. Chipboard
13. Dimensional Design (may use another technique to create dimensional design, such as die-cut and stamping. Does not count as two techniques.)
14. Two-page layout, coordinated and themed.
15. Memorabilia (refer to manual)
16. Trending techniques

### **SCRAPBOOKING ONE PAGE LAYOUT**

Class 1001 One Page Layout Jr.

Class 1002 One Page Layout Int.

Class 1003 One Page Layout Sr.

All exhibits will consist of the following:

- A. Completed Scrapbooking e-Record presented in a sturdy binder/notebook with completed Technique Reflection Page and required number of activities completed.
- B. One-page layout scrapbook page 8 ½" x 11" or 12" x 12".
  1. Page shall contain techniques from your technique list that you have chosen to use in your project. Create a page that is pleasing to the eye, items are not cluttered, and colors are appropriate to subject matter.
  2. **Must be exhibited in a three-ring binder or scrapbook binder. Only submit the one page to be judged.**
- C. Journaling and titling must be included on the one page.

### **SCRAPBOOKING TWO PAGE LAYOUT**

Class 1004 Two Page Layout Jr.

Class 1005 Two Page Layout Int.

Class 1006 Two Page Layout Sr.

All exhibits will consist of the following:

- A. Completed Scrapbooking e-Record presented in a sturdy binder/notebook with completed Technique Reflection Page and required number of activities completed.
- B. Designated Two-page layout in 8 ½" x 11" or 12" x 12". Formatted to go together in a set (a two-page spread) that is coordinated by color and design which follows a theme with good logical order.
  1. Place the two-page layout in an appropriately sized binder in protective archival safe sleeves.
  2. Pages shall contain techniques from your technique list that you have chosen to use in your project. Create pages that are pleasing to the eye, items are not cluttered, and colors are appropriate to subject matter.
  3. **Must be exhibited in a three-ring binder or scrapbook binder. Only submit the two pages to be judged.**
- B. Journaling and titling must be included on the two-page layout.

### **SCRAPBOOKING ALBUM**

Class 1007 Album Jr.

Class 1008 Album Int.

Class 1009 Album Sr.

All exhibits will consist of the following:

- A. Completed e-Record presented in a sturdy binder/notebook with completed Technique Reflection Page and required number of activities completed.
- B. Completed album must contain eight (8) pages, designed on both front and back, for a total of sixteen (16) pages for Seniors; a total of six (6) pages, designed on both front and back, for a total of twelve (12) pages for Intermediates; and a total of four (4) pages, designed on both front and back, for a total of eight (8) pages for Juniors.
  1. Pages must be exhibited between a sturdy front and back cover with each page in a protective archival safe sleeve. If memorabilia are included, they should be encased in a protective sleeve and must include additional techniques to be part of the page count. For example, if an album contains fifteen pages of layouts and the sixteenth page is memorabilia only with no technique, the album is missing a page and can or will be disqualified.
  2. Mark album pages to correspond with the technique reflection page.
  3. Album shall follow a theme or be in chronological order.
  4. All pages must include Journaling:
    - a. Correct spelling.
    - b. Tell your story: who, what, when, where, and why?
    - c. Title each page, or two-page layout.
    - d. Album must contain at least one hand-written journal entry; all others may be typed.
  5. If adding pages to an album that has already been judged, only submit the pages done within the current 4-H year; do not include pages from past years. Document that this is an ongoing project (i.e., second edition "Seattle" album exhibited in 2016).

### **SCRAPBOOKING—TAG MAKING**

#### **(For Juniors Only)**

Class 1010 Tag Making Jr.

All exhibits will consist of the following:

- A. Completed e-Record presented in a sturdy binder/notebook with completed Technique Reflection Page and required number of activities completed.
- B. Set of 5 different hand-made tags following a theme with a maximum size of 3" x 5" per tag displayed on a sturdy 12" x 12" board.
  1. Tags shall contain techniques from your technique list that you have chosen to use in your project. Create tags that are pleasing to the eye, items are not cluttered, and colors are appropriate to subject matter.
  2. Tags should include a to/from or a greeting.
  3. Label tags on your board to correspond with Technique Reflection Page.
- B. No commercial based tags can be used.

### **SCRAPBOOKING—CARD MAKING**

#### **(For Intermediates and Seniors Only)**

Class 1011 Card Making Int.

Class 1012 Card Making Sr.

All exhibits will consist of the following:

- A. Completed e-Record presented in a sturdy binder/notebook with completed Technique Reflection Page and required number of activities completed.
- B. Set of 4 different hand-made cards following a theme with a maximum size of 4"x 6" per card displayed on a sturdy 12" x 12" board.
  1. Cards shall contain techniques from your technique list that you have chosen to use in your project. Create cards that are pleasing to the eye, items are not cluttered, and colors are appropriate to subject matter.
  2. Label cards on your board to correspond with Technique Reflection Page.

C. No commercial based tags can be used.

## Visual Arts

Note: Please read 4-H Project Exhibit Rules on pages 3 and 4.

Exhibit your best design.

There is no limit for years of participation in a unit. **Drawings and paintings must be no larger than 16" x 24" when framed and submitted for judging ready to hang for display.** Ready-to-hang for pictures means wire is secured (ex: with D-rings and screws) and heavy enough to hold the picture. Do not use tape or sawtooth hangers.

The Visual Arts project has two manuals, Portfolio Pathways and Sketchbook Crossroads. Portfolio Pathways has three chapters: Chapter 1, Painting; Chapter 2, Printing; and Chapter 3, Graphic Design. Sketchbook Crossroads has three chapters: Chapter 1, Drawing; Chapter 2, Fiber Arts; and Chapter 3, Sculpture.

### PORTFOLIO PATHWAYS—PAINTING AND PRINTING

Class 1101 Painting and Printing Jr.

Class 1102 Painting and Printing Int.

Class 1103 Painting and Printing Sr.

### PORTFOLIO PATHWAYS—GRAPHIC DESIGN

Class 1104 Graphic Design Jr.

Class 1105 Graphic Design Int.

Class 1106 Graphic Design Sr.

All exhibits will consist of the following:

- A. Completed e-Record in a sturdy binder/notebook.
- B. **Complete the Visual Arts Required Techniques Chart in the e-Record. Include the artwork, or a copy/photo of the work in your record book. Provide a full-page picture of your final artwork to be exhibited labeled with techniques used on that piece in the e-Record.** (For example: Art techniques for painting -- acrylics, watercolors, abstracts, sand painting, self-portrait, action painting, oil painting with impasto, scumbling and perspective and encaustic painting. See manual for printing and graphic-design techniques.)
- C. Explain in your 4-H e-Record story what you learned.
- D. Exhibit: display your best art design. Oil paintings and acrylic paintings should be no larger than 16" x 24" when framed and **ready to hang**. Oil and acrylic paintings may be framed **without** glass. Watercolor paintings should use small mattes and be framed **with** glass. The framed watercolor should not be larger than 16" x 24".
- E. Graphic Design exhibit can be a logo or a self -portrait, a blog, advertisement, website, CD or DVD label, optical illusion, or a notebook of your graphic designs, etc.

### SKETCHBOOK CROSSROADS—DRAWING

Class 1107 Drawing Jr.

Class 1108 Drawing Int.

Class 1109 Drawing Sr.

### SKETCHBOOK CROSSROADS—FIBER AND SCULPTURE

Class 1110 Fiber and Sculpture Jr.

Class 1111 Fiber and Sculpture Int.

Class 1112 Fiber and Sculpture Sr.

All exhibits will consist of the following:

- A. Completed e-Record presented in a sturdy binder/notebook.

- B. Complete the Visual Arts Required Techniques Chart in the e-Record. Include the artwork, or a copy/photo of the work in your record book. Provide a picture of your final artwork to be exhibited labeled with techniques used on that piece in the e-Record. (For example: Art techniques for drawing – continuous and contour, shading, perspective, paper choices, colored pencils, pen and ink, calligraphy, and cartooning. See manual for fiber and sculpture techniques.)
- C. Explain in your 4-H e-Record story what you learned.
- D. Exhibit: display your best art design or sculpture. Framed drawings shall be no larger than 16” x 24” including the frame **with glass** and **ready to hang**. Fiber art may be framed **without glass** and ready to hang and no larger than 16”x 24”.

## Family Consumer Science Projects

### Artistic Clothing

TBD, Superintendent

Note: Please read 4-H Project Exhibit Rules on pages 3 and 4.

Project Exhibit Rules:

- A. Requirement: All exhibit garments must be labeled with name, age, county, and unit of the 4-H member. Labels must be attached at the inside of the neckline or at the waistband of skirts and pants. Information must be printed on a label and securely attached to the garment or article. This will assist in case of property loss.
- B. Garments may be worn before exhibiting but should be in good, clean condition.
- C. An exhibit shall consist of no more than three coordinated pieces (but no accessory items such as shoes, jewelry, hats, etc.). **All clothing pieces must be securely attached together on hangers.**
- D. e-Records – Do not use covers that are clear plastic with sliders.
- E. Members are encouraged to select a unit that challenges their skills. All units will be judged on required skills included in the manual.
- F. Note: All ELBERT COUNTY Fair silk items or garments will be displayed only with a permission-to-display form that acknowledges possible fading caused by state fair display lighting. Permission-to-display forms are available at Extension offices.

### UPCYCLE YOUR STYLE—APPLIED

Class 1201 Applied Jr.

Class 1202 Applied Int.

Class 1203 Applied Sr.

All exhibits will consist of the following:

- A. Completed Artistic Clothing e-Record presented in a sturdy binder/notebook. Include in the project story where you got the idea for your project, what you liked best about the project, what you would change, how to clean your project, how the item will be used and if you recycled or reused any fabric or other materials for your project. If a pattern was used, please include the pattern instruction sheet.
- B. Include the following information on the Artistic Clothing page.
  1. A list of all garments made
  2. A description of the steps in order of application (including product name and numbers, etc.) for your exhibit item
- C. Up to three coordinated wearable garments (but no accessory items such as shoes, jewelry, etc.). Decoration is attached by gluing, fusing or painting. Examples: jewels, puff paints, appliqués, tie-dye.

### UPCYCLE YOUR STYLE—STITCHED

Class 1204 Stitched Jr.

Class 1205 Stitched Int.  
Class 1206 Stitched Sr.

All exhibits will consist of the following:

- A. Completed Artistic Clothing e-Record presented in a sturdy binder/notebook. Include in the project story where you got the idea for your project, what you liked best about the project, what you would change, how to clean your project, how the item will be used and if you recycled or reused any fabric or other materials for your project. If a pattern was used, please include the pattern instruction sheet.
- B. Include the following information on the Artistic Clothing page.
  1. A list of all garments made
  2. A description of the steps in order of application (including product name and numbers, etc.) for your exhibit item
- C. Up to three coordinated wearable garments (but no accessory items such as shoes, jewelry, etc.). Decoration may be hand-or machine-stitched. Examples: machine or hand sewing, such as adding a collar or skirt, appliqué-statin stitch, embroidery, quilting, beading, knitting or crochet (by self or others).

### **UPCYCLE YOUR STYLE—COMBINATION**

Class 1207 Combination Jr.  
Class 1208 Combination Int.  
Class 1209 Combination Sr.

All exhibits will consist of the following:

- A. Completed Artistic Clothing e-Record presented in a sturdy binder/notebook. Include in the project story where you got the idea for your project, what you liked best about the project, what you would change, how to clean your project, how the item will be used and if you recycled or reused any fabric or other materials for your project. If a pattern was used, please include the pattern instruction sheet.
- B. Include the following information on the Artistic Clothing page.
  1. A list of all garments made
  2. A description of the steps in order of application (including product name and numbers, etc.) for your exhibit item
- C. Up to three coordinated wearable garments (but no accessory items such as shoes or jewelry). Decoration includes a significant amount (minimum of 30 percent each) from the two categories on one garment.

### **RECYCLED CLOTHING**

Class 1210 Recycled Clothing Jr.  
Class 1211 Recycled Clothing Int.  
Class 1212 Recycled Clothing Sr.

All exhibits will consist of the following:

- A. Completed Artistic Clothing e-Record with pattern instruction sheet presented in a sturdy binder/notebook. Include in your story what you learned about recycling, the fiber content and/or care label of original item, any special problems and how you overcame them.
- B. Include the following information on the 4-H Artistic Clothing Pages of the e-Record.
  1. A list of all the garments or articles made
  2. Technique sheet where you describe each step, in order of application
  3. Written description of your project including goals, plans, accomplishments, evaluation
- C. Include the cost of each garment in the Expense record of the Artistic Clothing e-Record.
- D. One garment or outfit which illustrates what was learned. Garment must be of fabric and be sewn.

### **CREATIVE SEWING**

Class 1213 Creative Sewing Costumes Jr.  
Class 1214 Creative Sewing Costumes Int.  
Class 1215 Creative Sewing Costumes Sr.

Class 1216 Creative Sewing All Other Exhibits Jr.  
Class 1217 Creative Sewing All Other Exhibits Int.  
Class 1218 Creative Sewing All Other Exhibits Sr.

All exhibits will consist of the following:

- A. Completed Artistic Clothing e-Record with a description of what was done presented in a sturdy binder/notebook. Include in the project story where you got the idea for your project, what you liked best about the project, what you would like to change, and how the item will be used. If a pattern was used, please include the pattern instruction sheet.
- B. Include the following information on the Artistic Clothing page.
  1. A list of all items made
  2. A description of the steps in order of application (including product name and numbers, etc.) for your exhibit item
- C. One to three coordinated items illustrating what was learned (costumes, puppets, accessories, toys, stuffed animals, book bags, sleeping bags, etc.). Note: Small items such as accessories and small doll clothes are to be displayed on a **foam board or pegboard appropriate to the size of the items being exhibited.**

### **BUYMANSHIP**

Class 1219 Buymanship Int.  
Class 1220 Buymanship Sr.

All exhibits will consist of the following:

- A. Completed Buymanship Clothing e-Record, completed manual presented in a sturdy binder/notebook. Include in the project story where you got the idea for your project, what you liked best about the project, and what you would like to change.
- B. Two (2) activities are to be included in your e-record. Choose from the following:
  1. Self-assessment (Getting to Know Myself)
  2. Wardrobe Inventory
  3. Clothing Plan of Action
  4. Selecting Becoming Colors
- C. One completed outfit, which may include belts and scarves. No other accessories allowed. The exhibit needs to be neat, clean and pressed: ready for display.

### **CREATE YOUR OWN (Exploration of Textiles and Clothing)**

Class 1221 Create Your Own Int.  
Class 1222 Create Your Own Sr.

All exhibits will consist of the following:

- A. Completed Artistic Clothing e-Record that includes a special study with a written report presented in a sturdy binder/notebook. Include in the project story where you got the idea for your project, what you liked best about the project, what you would like to change, and how the item will be used.
- B. Include the following information on the Artistic Clothing page.
  1. Written description of your project:
  2. goals
  3. plans
  4. accomplishments
  5. evaluation

- C. Optional: Constructed article or display related to special study. The standardized display board size is 4' x 3'.
- D. **Project will be evaluated on the quality of content from completed e-Record and written description (50 percent), and quality of construction for the item or quality of display board (50 percent).**

## Cake Decorating

Kathy Hettinger, Superintendent

Project Exhibit Rules:

Note: Please read 4-H Project Exhibit Rules on pages 3 and 4.

- A. Cake should be placed on a very firm, disposable surface (foam core, strong cardboard, plywood, particle board, etc.), cut parallel to the shape of the cake and must be 1½" on each side from the base of the border, not the cake. The surface should be covered. Freezer paper is not advised because it absorbs grease. The cake board must be covered with a food safe material, such as aluminum foil. If you use decorative or gift wrap paper or fabric, it must be covered in food quality plastic wrap.
- B. **Cakes are to be delivered to state fair in boxes only, not plastic carriers, to help maintain integrity of the exhibit. Place FairEntry labels on top of the cake board, not underneath.**
- C. It is recommended that members learn the basic cake decorating skills included in Units 1-3 before taking any of the more advanced units. Youth may then select the unit which includes the skills they wish to learn. Units 4-6 do not have to be taken in the order as numbered and are for Juniors, Intermediates, and Seniors. **Units 7-9 do not have to be taken in the order as numbered and are for Intermediates and Seniors. Units 10-12 are for Senior members only.**
- D. **Real** cakes are required for Units 1-6. Cake forms are preferred for exhibits in Units 7-10, as they hold up better under state fair conditions.
- E. Once a 4-H member has received a placing in the top 10 or a grand champion, they need to move to another unit because the skills in that unit have already been mastered. Also, if a member repeats a unit, they must show what new skill was learned.
- F. **No non-edible decorations can be used in Units 1-6.**
- G. Lower Units (1-3) in Cake Decorating should not use Royal Icing or Rolled Fondant as the base frosting. NO fondant, gum paste, or marzipan decorations can be used in Units 1, 2 or 3. Only required tip work can be used in Units 2 and 3.
- H. If your exhibit requires over 2' x 2' in exhibit area, you **must** check with the superintendent.
- I. Cakes will **not** be cut for judging.
- J. Real cakes are required for all four required cakes and cupcake batter in Units 1-6. At least 2 of the cakes need to be real in Units 7-10. In Unit 8, at least 2 of the 4 cakes must be real cakes.
- K. Unit 11 is for molds and three molds are required plus the exhibit mold for a total of 4.
- L. In Unit 12, 75 percent of the judging will be on the notebook.
- M. **All cakes require a bottom border.**
- N. The definition of a two layered cake is two of the same size cakes placed on top of each other. This is used for units 3, 7, 8, & 9.
- O. Cakes qualifying for state fair may be remade. Remade cakes must use the same design as the cake judged at the county level.

### FOR UNITS 1-3 CLASSES

All exhibits will consist of the following e-Record information (A, B, C) along with each unit's additional requirements (D, E, F).

- A. Completed Cake Decorating e-Record presented in a sturdy binder/notebook.
- B. Include the following information in the Cake Decorating e-Record on the four required cakes plus the exhibit cake (**TOTAL OF 5**) (All 5 cakes must be real cakes.):

1. occasion for use
2. real cakes
3. size or shape
4. techniques used
5. edible materials used
6. cost to buy similar cake
7. any problems you had

**Be sure to put the cost of your four cakes and exhibit cake on the expense page in the e-Record.**

- C. Include photos or drawings of the four required cakes in addition to photos of you working on your project in the record photo page.

### **EDIBLE CAKE DECORATING—UNIT 1**

Class 1301 Edible Cake Decorating Unit 1 Jr.

Class 1302 Edible Cake Decorating Unit 1 Int.

Class 1303 Edible Cake Decorating Unit 1 Sr.

All exhibits will consist of the following along with the e-Record (A, B, and C above):

- D. One decorated single layer **real** cake (8", 9" or 10" round or square or 9" x 13" rectangle cake) using only edible materials (for example: candies, pretzels, and coconut should be used to create a design). A real cake (no cake forms) should be used for exhibit in Unit 1. No decorator tips are allowed in this unit. **No fondant, gum paste, or marzipan** may be used for decorations or base icing on the cake. **One fourth of the top of cake should be visible to show smooth base. No royal icing** can be used as icing or decorations on the cake. **No non-edible material can be used in Units 1-6.**
- E. **Bottom base border required.**

### **SINGLE LAYERED CAKE—UNIT 2**

Class 1304 Single Layered Cake Unit 2 Jr.

Class 1305 Single Layered Cake Unit 2 Int.

Class 1306 Single Layered Cake Unit 2 Sr.

All exhibits will consist of the following along with the e-Record (A, B, and C above):

- D. One decorated single layered real cake (8", 9" or 10" round or square or 9" x 13" rectangle cake pan) using a leaf, star and round tips. **One fourth of the top of cake should be visible to show smooth base.** No fondant, gum paste, marzipan or royal icing may be used as icing or decorations on the cake. **Only required tip work can be used in Unit 2 (no candy, etc., for decoration). No non-edible decorations can be used in units 1-6.** Do not use flowers made on a flower nail or materials other than frosting in decorations. No cake forms can be used.
- E. **Bottom base border required.**

### **TWO LAYERED CAKE—UNIT 3**

Class 1307 Two Layered Cake Unit 3 Jr.

Class 1308 Two Layered Cake Unit 3 Int.

Class 1309 Two Layered Cake Unit 3 Sr.

All exhibits will consist of the following along with the e-Record (A, B, and C above):

- D. One decorated two-layered **real** cake (8", 9" or 10" round or square) using three to five different types of tips in decorating. You must use the round, star, and leaf tips, but may also use other tips, if you choose. Spatula and brush striping and figure piping are optional. **One fourth of the top of cake should be visible to show smooth base.** Do not use flowers made on a flower nail or materials other than frosting. No fondant, gum paste, marzipan, or royal icing may be used as icing or decorations on the cake. **Only required tip work can be used in Unit 3. No non-edible decorations can be used in units 1-6.**

- E. **Bottom base border required.**
- F. **Side trim required on Exhibit Cake and on at least two practice cakes. Side trim is uniformly placed icing decoration.**

### **CHARACTER CAKES—UNIT 4**

Class 1310 Character Cakes Unit 4 Jr.

Class 1311 Character Cakes Unit 4 Int.

Class 1312 Character Cakes Unit 4 Sr.

All exhibits will consist of the following:

- A. Completed Cake Decorating e-Record presented in a sturdy binder/notebook.
- B. Include the following information in the Cake Decorating e-Record on the three required character cakes plus the exhibit **(TOTAL of 4)** (All four character cakes must be real cakes):

1. occasion for use
2. shape
3. real character cakes
4. techniques used
5. tips used and where
6. cost to buy similar cake
7. any problems you had

**Be sure to put the cost of your three cakes and exhibit cake in the expense page in the e-Record.**

- C. Include photos or drawings of the four required cakes in addition to photos of you working on your project in the record photo page.
- D. One decorated character pan cake (an entire cake which resembles the shape of a character or object made without cutting or stacking and other than a classic square, round, oblong, heart, hexagon, oval or petal cake shape). Three-dimensional cakes are acceptable. The cake should be placed on a board that is cut to the shape of the character. The board must be cut 1½" from the base of the border, not the cake. The cake is to be primarily decorated with the star tip or other tips appropriate to the design. Fondant, gum paste, marzipan, or royal icing can be used only for decorations. **No non-edible decorations can be used in units 1–6.**
- E. A defined bottom base border that frames the cake is required for any smooth icing. Defined borders should be included if it finishes the overall aesthetic of the character (i.e. grass around an animal). Otherwise, all tip work should be completed to the cake board.
- F. Project will be evaluated on the quality of the information completed in the e-Record (25 percent) and quality of the exhibit (75 percent).

### **UNIT 5 SMALL TREATS**

#### **FOR THEMED, STACKED, AND CHARACTER CUPCAKES CLASSES**

All exhibits will consist of the following e-Record information (A, B, C) along with each unit's additional requirements (D).

- A. Completed Cake Decorating e-Record presented in a sturdy binder/notebook.
- B. Include the following information in the Cake Decorating e-Record: a minimum of three batches of cupcakes (can either be themed, stacked or character), plus the exhibit cupcakes, for a minimum of four baking and decorating experiences. One batch = 12 cupcakes. **(TOTAL OF 4):**

1. occasion for use
2. size or shape
3. four batches of cupcakes
4. techniques used
5. tips used and where
6. edible materials used
7. cost to buy similar cupcakes
8. any problems you had

**Be sure to put the cost of your three cupcake batches and exhibit cupcakes on the expense page in the e-Record.**

- C. Include photos or drawings of the four required batches in addition to photos of you working on your project in the record photo page. Write a short explanation of what you did and what you learned with each batch you decorated.

### **THEMED CUPCAKES—UNIT 5**

- Class 1313 Themed Cupcakes Unit 5 Jr  
Class 1314 Themed Cupcakes Unit 5 Int.  
Class 1315 Themed Cupcakes Unit 5 Sr.

All exhibits will consist of the following along with the e-Record (A, B, and C above):

- D. A minimum of 3 and a maximum of 6 regular size (2 ¾ inches) cupcakes in liners. Cupcakes should be decorated using frosting and edible materials. Fondant, gum paste, marzipan, and royal icing can be used only for decorations. Cupcakes should be of a similar theme, meaning that there is a central idea between all the cupcakes (for example, animal theme or flower theme; Disney characters cupcakes do not have to be all the same). Place each decorated cupcake in a disposable muffin tin or a disposable container that matches the theme and is no larger than 10-inch round (example: teacups, ice cream cones, etc.). Frosting must cover the cupcake and provide a base for decorations. Spatula painting and brush striping are optional. Please label with the exhibitor name and county. No non-edible decorations can be used.

### **STACKED CUPAKES—UNIT 5**

- Class 1316 Stacked Cupcakes Unit 5 Jr.  
Class 1317 Stacked Cupcakes Unit 5 Int.  
Class 1318 Stacked Cupcakes Unit 5 Sr.

All exhibits will consist of the following along with the e-Record (A, B, and C above):

- D. A minimum of 4 and a maximum of 8 cupcakes creating one design where cupcakes are stacked on top of each other and decorated. (Experiment with using mini cupcakes and regular sized cupcakes when stacking.) Non-visible supports can be used to hold stacked cupcakes. Cupcakes are decorated using frosting and edible materials. Frosting must cover the cupcake and provide a base for decorations. Fondant, gum paste, marzipan, and royal icing can be used for decorations only. Cupcakes should be secured to a sturdy board (foam core, cardboard, plywood, particle board, etc.) and secured with frosting for display. Board size should be appropriate to design (use guideline for cakes – maximum of 9" x 13" or a 14" round). Spatula painting and brush striping are optional. No non-edible decorations can be used. Cupcakes can be stacked 2 but not more than 4 high with a maximum of 8 cupcakes total for the design. A variety of sizes is allowed and encouraged.

### **CHARACTER CUPCAKES—UNIT 5**

- Class 1319 Character Cupcakes Unit 5 Jr.  
Class 1320 Character Cupcakes Unit 5 Int.  
Class 1321 Character Cupcakes Unit 5 Sr.

All exhibits will consist of the following along with the e-Record (A, B, and C above):

- D. Regular or mini-sized cupcakes or a combination may be used to create a character. Character cupcakes are multiple, **individually** decorated cupcakes that come together to create the character. **That is, if a cupcake is removed, the design or character will be ruined. Another way to describe character cupcakes is any design that cannot be displayed in a cupcake pan as individual cupcakes. The design should be one dimension – no stacking.** The cupcakes are decorated using frosting and edible materials. Spatula painting and brush striping are optional. Frosting must cover the cupcake and provide a base for decorations. Fondant, gum paste, marzipan, and royal icing can be used only for decorations. The character must be

displayed on one cake board (foam core, strong cardboard, plywood, or particle board, etc.) with a maximum size of 9" x 13" or 14" round cut to the shape of the design. No non-edible decorations can be used.

### **FOR THEMED AND STACKED COOKIE CLASSES**

All exhibits will consist of the following e-Record information (A, B, C) along with each unit's additional requirements (D).

- A. Completed Cake Decorating e-Record presented in a sturdy binder/notebook.
- B. Include the following information in the Cake Decorating e-Record on the required three batches of cookies plus your exhibit cookies. **(TOTAL OF 4)** One batch = 12 cookies.
  - 1. occasion for use
  - 2. size or shape
  - 3. three batches of cookies
  - 4. techniques used
  - 5. tips used and where
  - 6. edible materials used
  - 7. cost to buy similar cookies
  - 8. any problems you had

**Be sure to put the cost of your three cookie batches and exhibit cookies on the expense page in the e-Record.**

- C. Include photos or drawings of the four required batches of cookies in addition to photos of you working on your project in the record photo page. Write a short explanation of what you did and what you learned with each batch you decorated.

### **DECORATED THEMED COOKIES—UNIT 5**

Class 1322 Decorated Themed Cookies Unit 5 Jr.

Class 1323 Decorated Themed Cookies Unit 5 Int.

Class 1324 Decorated Themed Cookies Unit 5 Sr.

All exhibits will consist of the following along with the e-Record (A, B, and C above):

- D. A minimum of 3 and maximum of 6 regular size (approximately 3 inch) cookies displayed on a disposable base no larger than 12 inches, labeled with the Exhibitors name and county. Cookies should be of a similar design or theme. Cookies are decorated using frosting and edible materials. Spatula painting and brush painting are optional. Base Frosting – poured icing, buttercream, royal icing, run-in sugar – must cover the cookie and provide a base for decorations. Fondant, gum paste, marzipan, and royal icing may be used only for decorations.

### **DECORATED STACKED COOKIES—UNIT 5**

Class 1325 Decorated Stacked Cookies Unit 5 Jr.

Class 1326 Decorated Stacked Cookies Unit 5 Int.

Class 1327 Decorated Stacked Cookies Unit 5 Sr.

All exhibits will consist of the following along with the e-Record (A, B, and C above):

- D. Cookies stacked on top of each other and decorated to create one design or theme that is a minimum of 6 inches and maximum of 12 inches in height. Cookies may vary in size according to the type of stacking being done. Cookies should be secured to a sturdy covered board for display not to exceed 12 X 12 inches. Cookies are decorated using icing and edible materials. Fondant, gum paste, marzipan, and royal icing may be used only for decorations.

### **DECORATED COOKIE CONSTRUCTION—UNIT 5**

Class 1328 Decorated Cookie Construction Unit 5 Jr.

Class 1329 Decorated Cookie Construction Unit 5 Int.

Class 1330 Decorated Cookie Construction Unit 5 Sr.

All exhibits will consist of the following:

- A. Completed Cake Decorating e-Record presented in a sturdy binder/notebook.
- B. Include the following information in the Cake Decorating e-Record on the required three cookie structures plus your exhibit cookie structure. **(TOTAL OF 4)**
  - 1. occasion for use
  - 2. size or shape
  - 3. three batches of cookies
  - 4. techniques used
  - 5. tips used and where
  - 6. edible materials used
  - 7. cost to buy similar cookies
  - 8. any problems you had

**Be sure to put the cost of your three cookie structures and exhibit cookie structure on the expense page in the e-Record.**

- C. Include photos or drawings of the three required batches of cookies in addition to photos of you working on your project in the record photo page. Write a short explanation of what you did and what you learned with each batch you decorated.
- D. A cookie structure that is no more than 11 inches square and a maximum height of 20 inches. The structure should be placed on a sturdy covered board not to exceed 14 x 14 inches and labeled with the exhibitor's name and county. The structure may be placed in a "glass" case for display. The structure is decorated using frosting and edible materials. Fondant, gum paste, marzipan, and royal icing may be used only for decorations.

### **CUT-UP CAKES—UNIT 6**

Class 1331 Cut-Up Cakes Unit 6 Jr.

Class 1332 Cut-Up Cakes Unit 6 Int.

Class 1333 Cut-Up Cakes Unit 6 Sr.

All exhibits will consist of the following:

- A. Completed Cake Decorating e-Record presented in a sturdy binder/notebook.
- B. Include the following information in the Cake Decorating e-Record on the three-required cut-up cakes plus the exhibit cake **(TOTAL OF 4)** (All 4 cut-up cakes must be real cakes):
  - a. occasion for use
  - b. size or shape
  - c. real cut-up cakes
  - d. **pattern(s) used**
  - e. techniques used
  - f. tips used and where
  - g. edible materials used
  - h. cost to buy similar cake
  - i. any problems you had

**Be sure to put the cost of your three cakes and exhibit cake on the expense page in the e-Record.**

- C. Include photos or drawings of the four required cakes in addition to photos of you working on your project in the record photo page. **Pattern(s) or diagrams for all required cakes must be included in the e-Record. Be sure to include photos or drawings of the steps in your process.**
- D. One decorated cut-up cake using **three different types** of decorator tips (not different sizes of the same tips). (Edible materials may also be used; non-edible materials cannot be used to decorate.) Cake board (foam core, strong cardboard, plywood, or particle board, etc.) must be cut parallel to the shape of the cake, no larger than a 20" x 20" base. Non-edible internal supports are allowed but must not show. No non-edible decorations can be used.
- E. **Bottom base border required.**

## FLAT SURFACE AND NAIL FLOWERS—UNIT 7

Class 1334 Flat Surface and Nail Flowers Unit 7 Int.

Class 1335 Flat Surface and Nail Flowers Unit 7 Sr.

All exhibits will consist of the following:

- A. Completed Cake Decorating e-Record presented in a sturdy binder/notebook.
- B. Include the following information in the Cake Decorating e-Record of the three required cakes plus the exhibit cake (**TOTAL OF 4**) (At least 2 of the 4 must be real cakes):
  1. occasion for use
  2. size or shape
  3. cake or cake form (at least 2 real cakes)
  4. techniques used
  5. tips used and where
  6. cost to buy similar cake
  7. any problems you had**Be sure to put the cost of your three cakes and exhibit cake on the expense page in the e-Record.**
- C. Include photos or drawings of the four required cakes in addition to photos of you working on your project in the record photo page.
- D. One two-layered 8", 9", or 10" cake or cake form using a minimum of: one flat surface flower, one flower made on a flat flower nail, one border and one side trim learned in this unit. No fondant, gum paste, marzipan, or royal icing.
- E. **Side trim is required.**
- F. **Bottom base border is required.**

## FONDANT—UNIT 8

Class 1336 Fondant Unit 8 Int.

Class 1337 Fondant Unit 8 Sr.

All exhibits will consist of the following:

- A. Completed Cake Decorating e-Record presented in a sturdy binder/notebook
- B. Include the following information in the Cake Decorating e-Record of the three cakes plus the exhibit (**TOTAL OF 4**) (At least 2 of the 4 must be real cakes and all covered in fondant.) **Exhibit cake must be covered with fondant:**
  1. occasion for use
  2. size or shape
  3. cake or cake form (at least 2 real cakes and all 4 covered in fondant). Exhibit cake must be covered with fondant.
  4. techniques used
  5. tips used and where
  6. cost to buy similar cake
  7. any problems you had**Be sure to put the cost of your three required cakes and exhibit cake on the expense page in the e-Record.**
- C. Include photos or drawings of the four required cakes in addition to photos of you working on your project in the record photo page.
- D. One decorated two layered cake or cake form 8", 9" or 10" round or square covered in fondant and decorated using fondant and gum paste decorations.
- E. **Bottom base border required.**

## LILY NAIL FLOWERS—UNIT 9

Class 1338 Lily Nail Flowers Unit 9 Int.

Class 1339 Lily Nail Flowers Unit 9 Sr.

All exhibits will consist of the following:

- A. Completed Cake Decorating e-Record presented in a sturdy binder/notebook.
- B. Include the following information in the Cake Decorating e-Record of the three required cakes, plus the exhibit cake (**TOTAL of 4**). At least 2 of the 4 cakes must be real and 3 of the cakes (one of which must be the exhibit cake) must have a lily nail flower on them.
  - 1. occasion for use
  - 2. size or shape
  - 3. cake or cake form (at least 2 real cakes)
  - 4. techniques used
  - 5. tips used and where
  - 6. cost to buy similar cake
  - 7. any problems you had
- C. Include photos or drawings of the four required cakes in addition to photos of you working on your project in the record photo page.
- D. One decorated two-layered 8", 9", 10" cake or cake form using a flower made on a lily flower nail and a side trim.
- E. **Spatula painting, brush embroidery and texturing.**
- F. **Bottom base border is required.**

### **TIERED CAKES—UNIT 10 (SENIORS ONLY)**

Class 1340 Tiered Cakes Unit 10 Sr.

All exhibits will consist of the following:

- A. Completed Cake Decorating e-Record presented in a sturdy binder/notebook.
- B. Include the following information in the Cake Decorating e-Record of the three required cakes plus the exhibit cake (**TOTAL of 4**). (At least 2 of the 4 must be real cakes.) Forms are preferred for the exhibited cake:
  - 1. occasion for use
  - 2. size or shape
  - 3. cake or cake form (at least 2 real cakes)
  - 4. techniques used
  - 5. tips used and where
  - 6. cost to buy similar cake
  - 7. any problems you had
- C. Include photos or drawings of the four required cakes in addition to photos of you working on your project in the record photo page. Write a short explanation of what you did and what you learned with each cake you decorated.
- D. One decorated cake or cake form of three or more tiers of graduated sizes, using supports. Separator plates and pillars may be used but are not required.
- E. **Bottom base border is required.**

### **MOLDS—UNIT 11 (SENIORS ONLY)**

Class 1341 Molds Unit 11 Sr.

All exhibits will consist of the following:

- A. Completed Cake Decorating e-Record presented in sturdy binder/notebook.
- B. Include the following information in the Cake Decorating e-Record of the three required molded items plus the exhibit item (**TOTAL of 4**). Mold and shape at least three different edible materials (fondant, gum paste, molding chocolate, candy melts, sugar, cereal bases covered in fondant, etc.). See manual.
  - 1. occasion for use
  - 2. molding materials (at least three different molding or shaping materials)
  - 3. molds used (mold at least three different edible molds)
  - 4. techniques used

5. tips used and where
  6. edible materials other than molding
  7. cost of materials
  8. any problems you had
- C. Include photos or drawings of the three molded items in addition to photos of you working on your project in the record photo page. Write a short explanation of what you did and what you learned with each molded or shaped item you decorated.
- D. One molded or shaped object may be on a decorated cake, a cake form or an independent display case (no larger than 10 inches) to protect the item from harm.

## CREATE YOUR OWN—UNIT 12 (SENIORS ONLY)

Class 1342 Create Your Own Unit 12 Sr.

All exhibits will consist of the following:

- A. Completed Cake Decorating e-Record presented in a sturdy binder/notebook.
- B. **A detailed notebook describing your project including your goals, plans, accomplishments, and your evaluation of results. You may use pictures or any records you have kept that provide evidence of your accomplishments. This notebook is your main project exhibit and will count for 75 percent of the scoring. If an item was made as part of your project, a sample may be displayed as further evidence of the quality of your project. Notebook will be displayed. The display notebook and optional item must not require over a 2'x 2' area or consist of more than three items.**

## Clothing Construction

Kim Eastwood, Superintendent

Note: Please read 4-H Project Exhibit Rules on pages 3 and 4.

- A. With the sewing manuals, a member may stay in the manuals until they have mastered the techniques. UNIT 1—STEAM Clothing 1 (Beginning) is for **beginner sewers**, those with little to no experience. UNIT 2—STEAM Clothing 2 is for sewers that are familiar with the basic techniques and ready **to learn more advanced skills**. UNIT 3—STEAM Clothing 3 and UNIT 4—STEAM Clothing 4 is for the **advanced sewer** who wants to learn more about **tailoring and advanced skills**. STEAM Clothing 3 is for intermediates and seniors.
- B. Requirements: All exhibit garments must be labeled with name, age, county and unit of the 4-H member. Labels must be attached at the inside of the neckline or at the waistband of skirts and pants. Information must be written or typed on a label and securely attached to the inside of the garment. This will assist in case of property loss.
- C. The garments may be worn before exhibiting but should be in good and clean condition.
- D. Sergers may be used as a seam finish only; not as a seam for STEAM Clothing 1.
- E. Due to the difficulty of skills involved, buttonholes are to be used in STEAM Clothing 2 and above.
- F. Clothing is defined as wearable, dressy or casual wear, active/sportswear or sleepwear. An exhibit shall consist of no more than three coordinated pieces. No accessory items, i.e. shoes, scarves, hats, etc.
- G. **Advanced Unit STEAM Clothing 3—complete one textile experiment using your garment fashion fabric each year.** Include this information in your clothing construction e-Record: completed experiment sheets and sample(s) mounted on 8 ½" x 11" heavy paper. **No photos of experiments are allowed. Fabric must be attached.** Experiments may be repeated in a subsequent year if a different fabric is used.
- H. **A pattern instruction sheet is required** and must be attached securely to the e-Record. Write name and county on pattern instruction sheet.
- I. Do not use binders that are clear plastic with sliders.
- J. Members are encouraged to select a unit that challenges their skills. All units will be judged on required skills included in the manual.

K. All garments construction in STEAM Clothing 1, 2 and 3 are to be made for the member except for Unit 4 – Sewing for Others.

**Note: All ELBERT COUNTY Fair silk items or garments will be displayed only with a “permission to display” form that acknowledges possible fading caused by state fair display lighting.**

**Permission-to-display forms are available at county Extension offices.**

**For those members who are exhibiting more than one item, they may copy their e-Record. Each exhibit must have an e-Record. Be sure to highlight what you are exhibiting in your e-Record.**

### **FOR CLOTHING CONSTRUCTION UNIT 1, UNIT 2 AND UNIT 3 CLASSES**

All exhibits will consist of the following e-Record information (A, B, C, D, and E) along with each unit’s additional requirements (F and G).

- A. Completed Clothing Construction e-Record with pattern instruction sheet presented in a sturdy binder/notebook. Include in your story why you chose a clothing project, why you selected this garment or outfit and describe any changes made in the garment or outfit.
- B. Provide the brand, number and cost of the pattern used in the Clothing Construction e-Record on the Expense page. **If you designed your own pattern, please note this and include what you did for your pattern.**
- C. Include the following information on the Clothing Construction page.
  - 1. A list of all the garments or articles made
  - 2. Percent of fiber content of each garment or article made
  - 3. Care of garment exhibited
- D. **A pattern instruction sheet is required** and must be attached securely to the e-Record. Write name and county on the pattern instruction sheet. **Again, if you designed yourself, include your step-by-step instructions that you created for your project.**
- E. Include the cost of each garment in the Expense record of the Clothing Construction e-Record.

### **CLOTHING CONSTRUCTION 1 FUNDAMENTALS—UNIT 1**

- Class 1401 STEAM Clothing 1 Pillowcase Jr.
- Class 1402 STEAM Clothing 1 Pillowcase Int.
- Class 1403 STEAM Clothing 1 Pillowcase Sr.

All exhibits will consist of the following along with the e-Record (A, B, C, D, and E above):

- F. Pillowcase illustrating skills learned such as: simple seams, seam finishes, matching, suitable fabric/thread, cuff and even lip, etc. **Project is a pillowcase ONLY. No pillow can be inside the pillowcase.**
- G. Sergers may be used as a seam finish only; not as a seam for STEAM Clothing 1.

### **STEAM CLOTHING 1 FUNDAMENTALS—UNIT 1**

- Class 1404 STEAM Clothing 1 Pillow Jr.
- Class 1405 STEAM Clothing 1 Pillow Int.
- Class 1406 STEAM Clothing 1 Pillow Sr.

All exhibits will consist of the following along with the e-Record (A, B, C, D, and E above):

- F. Simple Pillow – No larger than 18” x 18” illustrating skills learned such as: simple seams, seam finishes, suitable fabric/thread, matching, trimmed corners, finished closure (lap or secured), etc. **The pillow is to be a simple shape (square, rectangle, circle, etc.); no pillows shaped such as animals or objects.**
- G. Sergers may be used as a seam finish only; not as a seam for STEAM Clothing 1.

### **CLOTHING CONSTRUCTION 1 FUNDAMENTALS—UNIT 1**

**Members can exhibit in one or more of the following classes:**

#### **Simple Top**

- Class 1407 STEAM Clothing 1 Simple Top Jr.
- Class 1408 STEAM Clothing 1 Simple Top Int.

Class 1409 STEAM Clothing 1 Simple Top Sr.  
**Simple Bottom (pants, pajama bottoms, shorts, skirts)**

Class 1410 STEAM Clothing 1 Simple Bottom Jr.

Class 1411 STEAM Clothing 1 Simple Bottom Int.

Class 1412 STEAM Clothing 1 Simple Bottom Sr.

**Simple Dress**

Class 1413 STEAM Clothing 1 Simple Dress Jr.

Class 1414 STEAM Clothing 1 Simple Dress Int.

Class 1415 STEAM Clothing 1 Simple Dress Sr.

**Simple One Piece (romper, overalls, apron)**

Class 1416 STEAM Clothing 1 Simple One Piece Jr.

Class 1417 STEAM Clothing 1 Simple One Piece Int.

Class 1418 STEAM Clothing 1 Simple One Piece Sr.

All exhibits will consist of the following along with the e-Record (A, B, C, D, and E above):

F. An exhibit illustrating the skills learned such as: simple seams, seam finishes, topstitching, darts, facing/interfacing, hems, fasteners, etc. Exhibits must use a firmly woven, medium-weight cotton or at least 50-percent cotton-blend fabric. Exhibit should be a simple pattern without set-in sleeves, zippers, collars, or buttonholes.

G. Sergers may be used as a seam finish only; not as a seam for STEAM Clothing 1.

**CLOTHING CONSTRUCTION 2 SIMPLY SEWING—UNIT 2**

**Members can exhibit in one or more of the following classes:**

**Top (vest acceptable)**

Class 1419 STEAM Clothing 2 Top Jr.

Class 1420 STEAM Clothing 2 Top Int.

Class 1421 STEAM Clothing 2 Top Sr.

**Bottoms (pants, shorts, skirt, or jumpsuit)**

Class 1422 STEAM Clothing 2 Bottom Jr.

Class 1423 STEAM Clothing 2 Bottom Int.

Class 1424 STEAM Clothing 2 Bottom Sr.

**Dress (not formal wear)**

Class 1425 STEAM Clothing 2 Dress Jr.

Class 1426 STEAM Clothing 2 Dress Int.

Class 1427 STEAM Clothing 2 Dress Sr.

**Two-Piece Outfit**

Class 1428 STEAM Clothing 2 Two-Piece Outfit Jr.

Class 1429 STEAM Clothing 2 Two-Piece Outfit Int.

Class 1430 STEAM Clothing 2 Two-Piece Outfit Sr.

**One Piece (romper, overalls, apron)**

Class 1431 STEAM Clothing 2 One Piece Jr.

Class 1432 STEAM Clothing 2 One Piece Int.

Class 1433 STEAM Clothing 2 One Piece Sr.

All exhibits will consist of the following along with the e-Record (A, B, C, D, and E above):

F. An exhibit illustrating the skills learned such as: set-in sleeves, zippers, collars, cuffs, buttonholes, etc. **The exhibit must be made from fabric of at least 50% cotton.** The exhibit **MUST INCLUDE** one or more of the following techniques: set-in sleeves, zippers, collars, cuffs or buttonholes.

G. **A pattern instruction sheet is required** and must be attached securely to the e-Record. Write name and county on pattern instruction sheet.

**CLOTHING CONSTRUCTION 2 SIMPLY SEWING—UNIT 3**

**Members can exhibit in one or more of the following classes:**

**Top (vest acceptable)**

Class 1434 STEAM Clothing 2 Unit 3 Top Jr.

Class 1435 STEAM Clothing 2 Unit 3 Top Int.

Class 1436 STEAM Clothing 2 Unit 3 Top Sr.

**Bottoms (pants, shorts, skirt, or jumpsuit)**

Class 1437 STEAM Clothing 2 Unit 3 Bottom Jr.

Class 1438 STEAM Clothing 2 Unit 3 Bottom Int.

Class 1439 STEAM Clothing 2 Unit 3 Bottom Sr.

**Dress (not formal wear)**

Class 1440 STEAM Clothing 2 Unit 3 Dress Jr.

Class 1441 STEAM Clothing 2 Unit 3 Dress Int.

Class 1442 STEAM Clothing 2 Unit 3 Dress Sr.

**Two-Piece Outfit**

Class 1443 STEAM Clothing 2 Unit 3 Two-Piece Outfit Jr.

Class 1444 STEAM Clothing 2 Unit 3 Two-Piece Outfit Int.

Class 1445 STEAM Clothing 2 Unit 3 Two-Piece Outfit Sr.

**One Piece (romper, overalls, apron)**

Class 1446 STEAM Clothing 2 Unit 3 One Piece Jr.

Class 1447 STEAM Clothing 2 Unit 3 One Piece Int.

Class 1448 STEAM Clothing 2 Unit 3 One Piece Sr.

All exhibits will consist of the following along with the e-Record (A, B, C, D and E above):

F. An exhibit illustrating the skills learned such as: set-in sleeves, zippers, collars, cuffs, buttonholes, etc. Exhibit may use any woven, synthetic, or knit fabric appropriate to the garment's design and should demonstrate skills beyond Unit 1 and 2. The exhibit **MUST INCLUDE** one or more of the following techniques: set-in sleeves, zippers, collars, cuffs or buttonholes. Exhibit can also include up to **TWO** advanced techniques (see advanced clothing for details on advanced techniques). To separate from Unit 2, the project **MUST** be a fabric content different from 50% cotton and/or have up to two advanced techniques.

G. **A pattern instruction sheet is required** and must be attached securely to the e-Record. Write name and county on pattern instruction sheet.

**ADVANCED CLOTHING CONSTRUCTION**

Garments should demonstrate at least **three** advanced sewing skills beyond STEAM Clothing 2; for example, rolled hems, hand-picked zippers, princess seams, flat felled or mock flat felled seam finishes, **matching plaids, boning, yolks**, tailoring techniques (French or Hong Kong seam finishes, non-woven interfacing, bound buttonholes, shoulder pads, sleeve heads, lining and or underling, welt pockets, swing tacks, etc.).

**CLOTHING CONSTRUCTION 3 A STITCH FURTHER—UNIT 4**

Class 1449 STEAM Clothing 3 Cotton or Cotton Blend Int.

Class 1450 STEAM Clothing 3 Cotton or Cotton Blend Sr.

Class 1451 STEAM Clothing 3 Synthetics and Rayon Int.

Class 1452 STEAM Clothing 3 Synthetics and Rayon Sr.

Class 1453 STEAM Clothing 3 Wool and Wool Blend Int.

Class 1454 STEAM Clothing 3 Wool and Wool Blend Sr.

Class 1455 STEAM Clothing 3 Silk and Silk-Like Int.

Class 1456 STEAM Clothing 3 Silk and Silk-Like Sr.

Class 1457 STEAM Clothing 3 Specialty Fabrics Int.

Class 1458 STEAM Clothing 3 Specialty Fabrics Sr.

All exhibits will consist of the following:

- A. Completed Clothing Construction e-Record with pattern instruction sheet presented in a sturdy binder/notebook. Include in your story why you chose a clothing project, why you selected this garment or outfit and describe any changes made in the garment or outfit.
- B. Provide the brand, number and cost of the pattern used in the Clothing Construction e-Record on the Expense page.
- C. Include the following information on the Clothing Construction page:
  1. List of all garments made
  2. Percent of fiber content of each garment
  3. Care of garment exhibited
  4. Textile experiments—complete one experiment using garment fashion fabric (fashion fabric must be attached – no photos). Include experiment sheet and mount the sample on 8 ½" x 11" heavy paper in the e-record.
- D. Include the cost of each garment in the Expense record of the Clothing Construction e-Record. This includes the project that you made.
- E. **A pattern instruction sheet is required** and must be attached securely to the e-Record. Write name and county on pattern instruction sheet. **If using a self-made pattern provide instructions or explanation for why you designed the way you did.**
- F. A garment or outfit of fabric containing a majority of 50-100 percent cotton, synthetic, wool or wool-blend, silk or silk-like fibers. Specialty fabrics are fabrics using sequins, beads, fleece, leather, linen, etc.

### **SEWING FOR OTHERS—UNIT 5**

Class 1459 Sewing for Others Jr.

Class 1460 Sewing for Others Int.

Class 1461 Sewing for Others Sr.

All exhibits will consist of the following:

- A. Completed Clothing Construction e-Record with pattern instruction sheet presented in a sturdy binder/notebook. Include in the project story:
  1. Why you chose to exhibit this item.
  2. Who you made the garment(s) for.
  3. What new skills you learned this year.
  4. What you liked best about your project.
  5. What would you like to change?
  6. What you learned about sewing for others? (Did you have any special pattern alterations? If so, describe.)
  7. Will you continue to sew for others, why or why not?
  8. Did you charge for making the garment/outfit (if so, what did you include in the billing, i.e., fabric notions, interfacing, utilities, time, mileage, etc.)?
  9. What other work have you done in this project?
- B. Include the following information on the Clothing Construction page.
  1. A list of all the garments or articles made
  2. Percent of fiber content of each garment or article made
  3. Care of garment exhibited
- C. One garment or outfit which illustrates what was learned.

### **Foods and Nutrition**

Tierney Wilson, Superintendent

Nolan Hankins, Assistant Superintendent

**Note: Please read 4-H Project Exhibit Rules on pages 3 and 4.**

Project Exhibit Rules:

- A. With the food manuals, a member may stay in the manuals for up to three years. *It is recommended that members should start with Cooking 101 and then go on to Cooking 201 to learn basic food preparation skills before taking the more advanced units.*
- B. **Include a copy of the recipe used and attach it securely to the e-Record. No commercial mixes are to be used for the base of the product. Example: boxed cake mixes for shortened cake or quick breads, cookie dough -boxed or frozen, etc. If the commercial mix is an added ingredient into the product, it is ok.**
- C. Bring food items on sturdy paper plates and/or covered heavy cardboard in a zipper-locked bag for display of food exhibits when possible. Plates and pans will not be returned. Food items should be covered securely.
- D. Only completed e-Records and canned goods will be returned.
- E. If a recipe from the manual is used, it may need to be adjusted for high altitude.
- F. Food items that show signs of mold growth or need refrigeration would not be safe to eat at time of judging and will not be accepted.
- G. **Members may exhibit in one or all classes from the unit that they are enrolled in. Each exhibit will need an e-Record.**
- H. Bacon is not acceptable in baked goods because the heat during the cooking process might not penetrate the meat thoroughly enough. Large pieces or chunks of cheese or a large proportion on or in recipes is not acceptable either.
- I. **Members who are exhibiting more than one item in a unit may copy their e-Record. Each exhibit must have an e-Record. Be sure to highlight what you are exhibiting in your e-Record.**

#### **FOR COOKING 101—UNIT 1 THROUGH COOKING 401—UNIT 4**

All exhibits will consist of the following e-Record information (A, B, C) along with each unit's additional requirements.

- A. Completed e-Record with exhibit item recipe presented in a sturdy binder/notebook.
- B. Include the following information on the Foods and Nutrition page:
  - 1. Foods prepared
  - 2. Number of times
  - 3. Special concerns
- C. Include documentation of activities completed from the manual in the record book as specified for each unit.

#### **COOKING 101—UNIT 1**

Include documentation of two completed learning activities from the manual in the record book.

**Members can exhibit in one or more of the following classes:**

Four no-bake cookies of one recipe made using stovetop or microwave

Class 1501 No Bake Cookies Jr.

Class 1502 No Bake Cookies Int.

Class 1503 No Bake Cookies Sr.

Four baked bar cookies of one recipe

Class 1504 Baked Bar Cookies Jr.

Class 1505 Baked Bar Cookies Int.

Class 1506 Baked Bar Cookies Sr.

Four baked, drop, or molded cookies of one recipe. (Molded cookies are made from a stiffer dough that is molded into balls or cookie shapes by hand before baking. Snickerdoodles are an example of molded cookies).

Class 1507 Cookies Jr.

Class 1508 Cookies Int.

Class 1509 Cookies Sr.

#### **COOKING 201—UNIT 2**

Include documentation of one completed learning activity on food safety and one on cooking basics. These can be a demonstration, written reports or displays.

**Members can exhibit in one or more of the following classes:**

One loaf quick bread any size (not yeast bread)

Class 1510 Quick Breads Jr.

Class 1511 Quick Breads Int.

Class 1512 Quick Breads Sr.

Four scones of one recipe

Class 1513 Scones Jr.

Class 1514 Scones Int.

Class 1515 Scones Sr.

Four muffins of one recipe

Class 1516 Muffins Jr.

Class 1517 Muffins Int.

Class 1518 Muffins Sr.

### **COOKING 301—UNIT 3**

All exhibits will consist of the following:

Include documentation of one completed food science experiment from the manual in the e-Record.

Shortened Cakes are cakes that use fat for flavor and texture. Most shortened cake recipes begin by beating the fat with sugar to create air bubbles.

**Members can exhibit in one or more of the following classes:**

One shortened cake without frosting

Class 1519 Shortened Cakes Jr.

Class 1520 Shortened Cakes Int.

Class 1521 Shortened Cakes Sr.

Four kneaded yeast rolls of one variety and shape or four cinnamon rolls

Class 1522 Yeast Rolls Jr.

Class 1523 Yeast Rolls Int.

Class 1524 Yeast Rolls Sr.

One recipe creative yeast bread, i.e., French bread, braided bread, other specialty bread

Class 1525 Creative Yeast Bread Jr.

Class 1526 Creative Yeast Bread Int.

Class 1527 Creative Yeast Bread Sr.

Creative exhibit (notebook) illustrating party planned by member, including theme, timeline and menu that includes one or more home-prepared foods

Class 1528 Party Planning Jr.

Class 1529 Party Planning Int.

Class 1530 Party Planning Sr.

### **COOKING 401—UNIT 4**

Include documentation of one completed food science experiment from the manual in the e-Record.

**Members can exhibit in one or more of the following classes:**

Four flatbreads of one variety and shape

Class 1531 Flatbread Jr.

Class 1532 Flatbread Int.

Class 1533 Flatbread Sr.

One 8" x 9" double-crust fruit pie made with homemade fruit filling in a disposable pie tin. No canned fruit fillings or lattice-top pie crusts allowed. **Pie crusts must be homemade. Store purchased crusts are not allowed.**

Class 1534 Double Crust Pie Jr.

Class 1535 Double Crust Pie Int.

Class 1536 Double Crust Pie Sr.

Creative exhibit (notebook) illustrating celebration meals planned by member, including budget, timeline, and menu that includes two or more homemade prepared foods

Class 1537 Celebration Meals Jr.

Class 1538 Celebration Meals Int.

Class 1539 Celebrations Meals Sr.

### **OUTDOOR COOKING AND LIVING—UNIT 5**

Class 1540 Outdoor Cooking and Living Jr.

Class 1541 Outdoor Cooking and Living Int.

Class 1542 Outdoor Cooking and Living Sr.

All exhibits will consist of the following:

- A. Completed e-Record presented in a sturdy binder/notebook. Include in the project story what new skills you have learned.
- B. Include the following information on the Foods and Nutrition page:
  1. Foods prepared
  2. Location
  3. Number of times
  4. Special concerns
- C. One of the following:
  1. A box lunch of food-safe products or a representative of the product (pictures of food)
  2. One cup (8 oz.) of instant drink mix properly packaged with the date of preparation and a list of ingredients included on a label.
  3. One of the following options: steak seasoning, vegetable seasoning, beef rub, or pork rub properly packaged with the date of preparation and a list of ingredients included on a label.
  4. A piece of equipment made by the exhibitor (no larger than 3' x 3' x 3'). If the exhibit is larger than these dimensions, a notebook with how and what was made can be used as the exhibit.

### **CULTURAL AND ETHNIC FOODS—UNIT 6**

Class 1543 Cultural and Ethnic Foods Int.

Class 1544 Cultural and Ethnic Foods Sr.

Exhibit will consist of the following:

- A. Completed e-Record and manual that includes: Activity 1 on page 16; Activity 2 on page 16; Record on pages 17-23 including the Meal Report pages 19-20; with emphasis in your story about your accomplishments presented in a sturdy binder/notebook.
- B. Include the following information on the Foods and Nutrition page:
  1. Foods prepared
  2. Number of times
  3. Special concerns
- C. A food product with recipe representative of the cultural or ethnic group within the United States that you selected.
- D. Exhibit will be evaluated on the quality of content in the e-Record and manual activities (50 percent) and the quality of the food product (50 percent).**

**Note: The food product must be safe to hold at room temperature during judging and display.**

### **PASSPORT TO FOREIGN COOKERY—UNIT 7**

Class 1545 Passport to Foreign Cookery Int.

Class 1546 Passport to Foreign Cookery Sr.

All exhibits will consist of the following:

- A. Completed e-Record and a notebook with research on selected country containing three parts:

1. A maximum of 10 pages of research and pictures on customs relating to food habits and food sources such as crops, fishing, etc. Discussion might include food shopping habits, percentage of income spent for food, how the area of the country affects diets, etc.
  2. A maximum of three pages of other information about the country, i.e., climate, geography, political structure, religion, dress, etc.
  3. A maximum of five pages of menus and recipes indicating nutritional balance of a traditional meal plus activity pages 9-11 in the manual presented in the binder/notebook with the other materials.
- B. Include the following information on the Foods and Nutrition page:
1. Foods prepared
  2. Number of times
  3. Special Concerns
- C. A food product with recipe that is representative of the country.
- D. Exhibit will be evaluated on the quality of content in the e-Record and research of selected country (50 percent) and the quality of the food product (50 percent).**
- Note: The food product must be safe to hold at room temperature during judging and display.**

## Food Preservation

Tierney Wilson, Superintendent

Nolan Hankins, Assistant Superintendent

**Note: Please read 4-H Project Exhibit Rules on pages 3 and 4.**

### Special Exhibit Rules for Food Preservation:

- A. All foods must have been preserved since the last state fair by the 4-H member.
- B. All canned products must include the following information on the label. Use the label templates below the examples and print on cardstock type paper. Affix labels to jars using a rubber band around the top of the jar.
  1. Name of product
  2. Additional ingredients/Acidity (salt, lemon juice, vinegar, ascorbic acid)
  3. Method of preparation (type of syrup, raw or hot pack) as applies to product canned
  4. Method of processing (i.e., pressure canner, water bath), weighted or dialed gauge, pounds of pressure
  5. Exact processing time, including altitude/elevation adjustment
  6. Elevation at which processing was done (refer to Making altitude/elevation adjustments in your manual and to CSU's Preserve Smart app at <https://apps.chhs.colostate.edu/preservesmart/>)
  7. Full date processed

#### Examples:

##### Food Preservation

Name of product:           Peaches          

Additional ingredients/Acidity:   ascorbic acid dip  

Method of preparation:   hot pack-thin syrup  

Method of processing:   boiling water bath canned  

Processing time:           35 minutes          

Kitchen Elevation:           5,000'          

Date canned or dried:           November 1, 2025          

##### Food Preservation

Name of product:           Green Beans          

Additional ingredients/Acidity:   1/2 tsp salt  

Method of preparation:   hot pack  

Method of processing:   pressure canned Lbs. 12 ½  

Processing time:           25 minutes          

Kitchen Elevation:           5,000'          

Date canned or dried:           July 1, 2026          

- C. All dried foods must include the following information on the label:
  1. Name of food product
  2. Additional ingredients added, if any
  3. Method of preparation, pretreatment used, if any
  4. Method of drying (oven, dehydrator, freeze)

5. Total drying time
6. Conditioning time/days
7. Date dried

Example:

**Food Preservation**

Name of product: Apricots  
 Additional ingredients/Acidity: ascorbic acid  
 Method of preparation: dipped  
 Method of drying: dehydrator-dried  
 Processing time: 8 hours  
 Conditioning: 7 days  
 Date dried: July 1, 2026

- D. Clear standard canning jars, such as Ball or Kerr, must be used for all canned exhibits. **All jars must have new two-piece lids. Reusable lids and one-piece lids are not allowed.** Decorative storage containers which have a rubber seal are not acceptable for canning exhibits.
- E. Screw bands should be used during transit to and from the state fair. Screw bands will be removed by the judge during judging.
- F. All preserved foods must follow CSU Preserve Smart or USDA recommendations. Recipes from 1994 through present must be used. (Refer to [project tip sheet](#).)
- G. Any jars showing leaks or spoilage will not be judged.
- H. Recipes from approved sources, such as USDA or CSU, that have been tested in a laboratory must be used to ensure that particular food mixture will be heated sufficiently in all parts within the jar and that acidity level is adequate to destroy both vegetative and spore forms of bacteria.
- I. The recipe must be included in the record book. Please make copies of the recipe page for additional recipes.
- J. 4-H members may enter up to three classes per unit, except Freezing Unit 1.

**FOR ALL FOOD PRESERVATION UNITS**

All exhibits will consist of the following completed e-Record information (A, B, and C below) along with each unit's additional requirements (D and E).

- A. e-Record shall be presented in a sturdy binder/notebook. The 4-H Food Preservation Information page and the Recipe Information page must be included.
- B. Include the following information on the Food Preservation page:
  - a. Date
  - b. Name of product
  - c. Amount
  - d. Preparation Method
  - e. Preservation or processing method used
- C. Include the recipe for your exhibit item(s) in your e-Record and cite the source where you got your recipe.

**FREEZING—Unit 1**

All exhibits will consist of the following along with the e-Record (A, B, and C above) as well as “My plans” on page 5 and “Exploring MyPlate” on pages 6-11 in the Freezing manual. Also, complete “Journaling” for at least two activities in the manual.

- D. A display board illustrating a topic investigated during the project year. The standardized display board size of 4 ft. x 3 ft. is to be used with 4-H projects. No additional items may be included in front of the display board.

Class 1601 Freezing Unit 1 Jr.  
 Class 1602 Freezing Unit 1 Int.

Class 1603 Freezing Unit 1 Sr.

## **DRYING—Unit 2**

All exhibits will consist of the following along with the e-Record (A, B, and C above) as well as “My plans” on page 5 and “Exploring MyPlate” on pages 6-11 in the Drying manual **or equivalent pages in the Freeze-Drying manual (once available) for Freeze Drying classes**. Also, complete “Journaling” for at least two activities in the manual.

D. Up to three of the following (one product per class) **Only b, c, and d apply to Freeze Drying classes:**

- a. Six rolls of the same fruit leather or six strips of jerky. Jerky recipes must use ELBERT COUNTY University recommended procedures. (See tip sheet for more information.) Deer and elk meat are to include a copy of test results for Chronic Wasting Disease. (CWD test mandatory and a copy placed in binder/notebook.)
- b. One-half cup of the same dried fruit.
- c. One-half cup of the same dried vegetable.
- d. One-half cup of mixed vegetables.

**E. For Freeze Drying classes, use either canning jars or vacuum sealed bags, so the judges can see the product. Do not use mylar bags.**

Class 1604 Drying Unit 2 Fruit Leather or Jerky Jr.  
Class 1605 Drying Unit 2 Fruit Leather or Jerky Int.  
Class 1606 Drying Unit 2 Fruit Leather or Jerky Sr.

Class 1607 Drying Unit 2 Same Dried Fruit Jr.  
Class 1608 Drying Unit 2 Same Dried Fruit Int.  
Class 1609 Drying Unit 2 Same Dried Fruit Sr.

Class 1610 Drying Unit 2 Same Dried Vegetable Jr.  
Class 1611 Drying Unit 2 Same Dried Vegetable Int.  
Class 1612 Drying Unit 2 Same Dried Vegetable Sr.

Class 1613 Drying Unit 2 Mixed Vegetables Jr.  
Class 1614 Drying Unit 2 Mixed Vegetables Int.  
Class 1615 Drying Unit 2 Mixed Vegetables Sr.

**Class 1616 Freeze Drying Unit 2 Fruit Jr.**  
**Class 1617 Freeze Drying Unit 2 Fruit Int.**  
**Class 1618 Freeze Drying Unit 2 Fruit Sr.**

**Class 1619 Freeze Drying Unit 2 Vegetables Jr.**  
**Class 1620 Freeze Drying Unit 2 Vegetables Int.**  
**Class 1621 Freeze Drying Unit 2 Vegetables Sr.**

## **BOILING WATER CANNING—UNIT 3**

All exhibits will consist of the following along with the e-Record (A, B, and C above) as well as “My plans” on page 5 and “Exploring MyPlate” on pages 6-11 in the Boiling Water Canning manual. Complete “Journaling” for at least two activities in the Boiling Water Canning manual. All exhibitors must complete questions on page 39 of the manual.

- Juniors = 1 question
- Intermediates = 2 questions
- Seniors = 3 questions

D. Up to three of the following (one jar per class):

- a. Fruit Spreads - Jelly, Jam, Preserves, Conserves, Marmalades, Fruit Butters (¼ pt or ½ pt jar with ¼” headspace)

- b. Pickled Fruit or Vegetable (pint jar with ½” headspace)
- c. Relish (pint jar with ½” headspace)
- d. Fruit (pint or quart jar)
- e. Tomato Product (whole, halved, crushed, juice, sauce [standard, BBQ, Ketchup]) (pint jar)
- f. Salsa (pint jar)
- g. Fruit Pie Filling - must use modified starch such as Clear-Jel (pint or quart jar)

Class 1622 Boiling Water Canning Unit 3 Fruit Spreads Jr.  
 Class 1623 Boiling Water Canning Unit 3 Fruit Spreads Int.  
 Class 1624 Boiling Water Canning Unit 3 Fruit Spreads Sr.

Class 1625 Boiling Water Canning Unit 3 Pickled Fruit or Vegetable Jr.  
 Class 1626 Boiling Water Canning Unit 3 Pickled Fruit or Vegetable Int.  
 Class 1627 Boiling Water Canning Unit 3 Pickled Fruit or Vegetable Sr.

Class 1628 Boiling Water Canning Unit 3 Relish Jr.  
 Class 1629 Boiling Water Canning Unit 3 Relish Int.  
 Class 1630 Boiling Water Canning Unit 3 Relish Sr.

Class 1631 Boiling Water Canning Unit 3 Fruit Jr.  
 Class 1632 Boiling Water Canning Unit 3 Fruit Int.  
 Class 1633 Boiling Water Canning Unit 3 Fruit Sr.

Class 1634 Boiling Water Canning Unit 3 Tomato Product Jr.  
 Class 1635 Boiling Water Canning Unit 3 Tomato Product Int.  
 Class 1636 Boiling Water Canning Unit 3 Tomato Product Sr.

Class 1637 Boiling Water Canning Unit 3 Salsa Jr.  
 Class 1638 Boiling Water Canning Unit 3 Salsa Int.  
 Class 1639 Boiling Water Canning Unit 3 Salsa Sr.

Class 1640 Boiling Water Canning Unit 3 Fruit Pie Filling Jr.  
 Class 1641 Boiling Water Canning Unit 3 Fruit Pie Filling Int.  
 Class 1642 Boiling Water Canning Unit 3 Fruit Pie Filling Sr.

#### **PRESSURE CANNING—UNIT 4**

All exhibits will consist of the following along with the e-Record (A, B, and C above) as well as “My plans” on page 5 and “Exploring MyPlate” on pages 6-11 in the Pressure Canning manual. Complete “Journaling” for at least two activities in the Pressure Canning manual. All exhibitors must complete questions on page 36 of the manual.

- Intermediates = 2 questions
- Seniors = 3 questions

- D. Up to three of the following (one jar per class):
- a. One pint jar of canned vegetables plus activity from manual that is related
  - b. One pint jar of tomato-based sauce without meat (example: Spaghetti Sauce) plus activity from manual that is related
  - c. One pint jar of canned dried beans plus activity from manual that is related
  - d. One pint jar of canned meat plus activity from manual that is related
  - e. One pint jar of combination (example: stew, spaghetti sauce with meat) plus activity from manual that is related

Class 1643 Pressure Canning Unit 4 Vegetables Int.  
 Class 1644 Pressure Canning Unit 4 Vegetables Sr.

- Class 1645 Pressure Canning Unit 4 Tomato Based Sauce Int.  
 Class 1646 Pressure Canning Unit 4 Tomato Based Sauce Sr.
- Class 1647 Pressure Canning Unit 4 Dried Beans Int.  
 Class 1648 Pressure Canning Unit 4 Dried Beans Sr.
- Class 1649 Pressure Canning Unit 4 Meat Int.  
 Class 1650 Pressure Canning Unit 4 Meat Sr.
- Class 1651 Pressure Canning Unit 4 Combination Int.  
 Class 1652 Pressure Canning Unit 4 Combination Sr.

## Heritage Arts

Terry Schaff, Superintendent

Note: Please read 4-H Project Exhibit Rules on pages 3 and 4.

Project Exhibit Rules:

- A. Articles may be worn or used before exhibiting but should be clean and in good condition when exhibited.
- B. All exhibits must have the name, age and county of the 4-H member attached. Information must be written on cloth and attached securely to each garment/piece.  
**Note: Small (less than 6"x6") or delicate items should be mounted on an 8"x10" foam core board.**
- C. It is to the member's advantage to include in the record a band from the skein of any commercial yarn or thread used in the project. This is helpful to judges when evaluating the project.
- D. All exhibits using patterns must have the pattern or a clear copy securely attached to the record, as this is useful to the judges when evaluating the project.  
**Note: All ELBERT COUNTY Fair silk items or garments will be displayed only with permission and an acknowledgment of possible fading caused by display lights. If forms are not available or are unsigned, the garment will not be displayed.**
- E. Members are encouraged to select a project that challenges their skills. There are no specific requirements for exhibit items. Quilts do have size requirements.
- F. All workmanship in Heritage Arts projects must be done by the member. All piecing and quilting must be done by the member.
- G. Miscellaneous Fiber Arts classes include Spinning, Weaving, Ethnic Arts, Rug Making and Macramé.
- H. When researching your project for the Heritage Arts Page in the e-Record, list references used:
  - a. Juniors (8-10) one or two references
  - b. Intermediates (11-13) two or three
  - c. Seniors (14 and older) three or more

**Note: All exhibits are limited to those that use fiber or fabrics, except for Miscellaneous Heritage Arts-Non-Fiber.**

### CROCHET – UNIT 1

- Class 1701 Crochet Unit 1 Jr.  
 Class 1702 Crochet Unit 1 Int.  
 Class 1703 Crochet Unit 1 Sr.

All exhibits will consist of the following:

- A. Completed Heritage Arts e-Record presented in a sturdy binder/notebook.
- B. Include the following information on the Heritage Arts page.
  1. Brief history report about the specific craft you selected:
    - a. Where did it begin?
    - b. How did it start?

- c. Why was it started?
- 2. Include the gauge used on your item.
- C. If a pattern was used, secure a copy of the pattern to the e-Record.
- D. One piece or set of up to three coordinated pieces illustrating skills learned. The skill demonstrated in the exhibit will be single crochet.

### **CROCHET—UNIT 2**

Class 1704 Crochet Unit 2 Jr.  
 Class 1705 Crochet Unit 2 Int.  
 Class 1706 Crochet Unit 2 Sr.

All exhibits will consist of the following:

- A. Completed Heritage Arts e-Record presented in a sturdy binder/notebook.
- B. Include the following information on the Heritage Arts page.
  - 1. Discuss yarn substitution:
    - a. How do you determine to change yarns?
    - b. How do you adapt your stitches or pattern to different weights of yarn?
  - 2. Include the gauge used on your item.
- C. If a pattern was used, secure a copy of the pattern to the e-Record.
- D. One piece or set of up to three coordinated pieces illustrating skills learned. The skills demonstrated in the exhibit can utilize single crochet and must include at least one of the following:
  - 1. half double
  - 2. double
  - 3. treble
  - 4. color work

### **CROCHET—UNIT 3**

Class 1707 Crochet Unit 3 Jr.  
 Class 1708 Crochet Unit 3 Int.  
 Class 1709 Crochet Unit 3 Sr.

All exhibits will consist of the following:

- A. Completed Heritage Arts e-Record presented in a sturdy binder/notebook.
- B. Include the following information on the Heritage Arts page.
  - 1. Discuss blocking and finishing techniques.
    - a. What method of blocking is preferred for different fibers?
    - b. Give examples of the finishing techniques you used to make your project complete.
  - 2. Include the gauge used on your item.
- C. If a pattern was used, secure a copy of the pattern to the e-Record.
- D. One piece or set of up to three coordinated pieces illustrating skills learned. The skills demonstrated in the exhibit can utilize any techniques learned in the project.

### **MISCELLANEOUS HERITAGE ARTS—FIBER (needle arts, weaving, spun skeins, felted bags, batiked fabric, hooked pillows, Navajo rugs, macramé, etc.)**

Class 1710 Fiber Arts Jr.  
 Class 1711 Fiber Arts Int.  
 Class 1712 Fiber Arts Sr.

All exhibits will consist of the following:

- A. Completed Heritage Arts e-Record presented in a sturdy binder/notebook.
- B. Include the following information on the Heritage Arts page.
  - 1. Brief history report about the specific craft you selected:
    - a. Where did it begin?

- b. How did it start?
- c. Why was it started?
- C. If pattern was used, secure a copy of the pattern to the e-Record.
- D. One piece or a set of up to three coordinated pieces, comprised of a minimum of 50 percent yarn/fabric illustrating skills learned. Can be ethnic - specific to a culture, country, or region. (Example: weavings, spun skeins, felted bags, batiked fabric, hooked pillows, Navajo rug, etc.) It is preferred that needle arts be finished in a way that allows the judge to see the back side of the piece as well as the front side. Exhibit should be no larger than 3' x 3' x 7' as meant to be displayed.

**MISCELLANEOUS HERITAGE ARTS—NON-FIBER (Native American beading, silver smithing, Ukrainian eggs, paper scrolling, wood carvings, etc.)**

- Class 1713 Non-Fiber Arts Jr.
- Class 1714 Non-Fiber Arts Int.
- Class 1715 Non-Fiber Arts Sr.

All exhibits will consist of the following:

- A. Completed Heritage Arts e-Record presented in a sturdy binder/notebook.
- B. Include the following information on the Heritage Arts page.
  - 1. Brief History report about the specific craft you selected:
    - a. Where did it begin?
    - b. How did it start?
    - c. Why was it started?
- C. If pattern was used, secure a copy of the pattern to the e-Record.
- D. One piece or a set of up to three coordinated pieces, with no yarn or fabric, illustrating skills learned. Can be ethnic - specific to a culture, country, or region. Examples: Native American beading, silver smithing, Ukrainian eggs, paper scrolling, wood carving, etc. Exhibit should be no larger than 3' x 3' x 7' as meant to be displayed.

**KNITTING – UNIT 1**

- Class 1716 Knitting Unit 1 Jr.
- Class 1717 Knitting Unit 1 Int.
- Class 1718 Knitting Unit 1 Sr.

All exhibits will consist of the following:

- A. Completed Heritage Arts e-Record presented in a sturdy binder/notebook.
- B. Include the following information on the Heritage Arts page.
  - 1. Brief history report about the specific craft you selected:
    - a. Where did it begin?
    - b. How did it start?
    - c. Why was it started?
  - 2. Include the gauge used on your item.
- C. If a pattern was used, secure a copy of the pattern to the e-Record.
- D. One piece or a set of up to three coordinated pieces illustrating what was learned. The skills demonstrated in the exhibit will be one or the other of the following:
  - a. Stockinette stitch
  - b. Garter stitch
  - c. Ribbing is optional

**KNITTING—UNIT 2**

- Class 1719 Knitting Unit 2 Jr.
- Class 1720 Knitting Unit 2 Int.
- Class 1721 Knitting Unit 2 Sr.

All exhibits will consist of the following:

- A. Completed Heritage Arts e-Record presented in a sturdy binder/notebook.
- B. Include the following information on the Heritage Arts page.
  1. Discuss yarn substitution:
    - a. How do you determine to change yarns?
    - b. How do you adapt your stitches or pattern to different weights of yarn?
  2. Include the gauge used on your item.
- C. If a pattern was used, secure a copy of the pattern to the e-Record.
- D. One piece or a set of up to three coordinated pieces illustrating what was learned. The skills demonstrated in the exhibit can utilize Stockinette and/or Garter stitch and must include at least one of the following:
  1. lace work
  2. cable work
  3. color workRibbing is optional.

### **KNITTING—UNIT 3**

Class 1722 Knitting Unit 3 Jr.

Class 1723 Knitting Unit 3 Int.

Class 1724 Knitting Unit 3 Sr.

All exhibits will consist of the following:

- A. Completed Heritage Arts e-Record presented in a sturdy binder/notebook.
- B. Include the following information on the Heritage Arts page.
  1. Discuss blocking and finishing techniques.
    - a. What method of blocking is preferred for different fibers?
    - b. Give examples of the finishing techniques you used to make your project complete.
  2. Include the gauge used on your item.
- C. If a pattern was used, secure a copy of the pattern to the e-Record.
- D. One piece or a set of up to three coordinated pieces illustrating what was learned. The skills demonstrated in the exhibit can utilize any techniques learned in the project.

### **FOR QUILTING UNITS 1 THROUGH UNIT 6**

All exhibits will consist of the following e-Record information (A and B) along with each unit's additional requirements (C through I).

- A. Completed Heritage Arts e-Record presented in a sturdy binder/notebook.
- B. Include the following information on the Heritage Arts page.
  1. Brief history report about the specific craft you selected:
    - a. Where did it begin?
    - b. How did it start?
    - c. Why was it started?
    - d. Historical information of your specific quilt block if applicable.
  2. List references used:
    - a. Juniors (8-10) one or two references
    - b. Intermediates (11-13) two or three references
    - c. Seniors (14-18) three or more references
  3. Include the stitches per inch on your item.
  4. List the skills (at least three for Units 1 and 2 and at least two for Units 3-6) that you learned and are used on your project.
  5. If a pattern was used, secure a copy of the pattern to the e-Record.

### **QUILTING—UNIT 1**

Class 1725 Quilting Unit 1 Jr.

Class 1726 Quilting Unit 1 Int.

Class 1727 Quilting Unit 1 Sr.

All exhibits will consist of the following along with the e-Record (A and B above):

- C. One finished item illustrating what was learned. Items should include **one** of the following:
  - 1. Simple pieced quilt (lap size or smaller)
  - 2. Pillow
  - 3. Pillow sham
  - 4. Two placemats
- D. Exhibited items must be quilted – machined or tied.
- E. No separate binding should be used.
  - 1. Items should be finished using a roll-over/self-binding or an envelope turn.
- F. Consistent use of ¼” seams required in all units.
- G. Two or more of the following required techniques are allowed:
  - 1. “Sandwiching” – layering quilt top, batting and backing
  - 2. Cutting of precuts and/or stitched pieces, using rulers and rotary cutter
  - 3. Straight block pattern
  - 4. “Nesting” seams
  - 5. Use of sashing
  - 6. Modification of original pattern (size, border, etc.)
- H. The exhibit should not use advanced quilting techniques used in Units 3, 4, and 5.
- I. Fabric selection allowed:
  - 1. Yardage
  - 2. Pre-printed panel
  - 3. Pre-cuts

**QUILTING—UNIT 2**

Class 1728 Quilting Unit 2 Jr.

Class 1729 Quilting Unit 2 Int.

Class 1730 Quilting Unit 2 Sr.

All exhibits will consist of the following along with the e-Record (A and B above):

- C. One finished item illustrating what was learned. Items should include **one** of the following:
  - 1. Quilt 36x36 or larger
  - 2. Table runner
  - 3. Wall hanging
- D. Exhibit items must be quilted – machine or tied, rag quilt.
- E. A separate binding should be used.
- F. Two or more of the following required techniques are allowed:
  - 1. “Sandwiching” – layering quilt top, batting and backing
  - 2. Cutting of precuts and/or stitched pieces, using rulers and rotary cutter
  - 3. Straight block pattern
  - 4. “Nesting” seams
  - 5. Use of sashing
  - 6. Mitered corners
- G. The exhibit should not use advanced quilting techniques used in Units 3, 4, and 5.
- H. Fabric selection allowed
  - 1. Yardage
  - 2. Pre-printed panel
  - 3. Pre-cuts

**QUILTING—UNIT 3**

Class 1731 Quilting Unit 3 Jr.

Class 1732 Quilting Unit 3 Int.

Class 1733 Quilting Unit 3 Sr.

All exhibits will consist of the following along with the e-Record (A and B above):

- C. One finished item illustrating what was learned. Items should include **one** of the following:
  - 1. Quilt (lap size or larger)
  - 2. Three coordinated pieces, such as a table runner and two placemats or a bed runner and two pillows
- D. Exhibited items must be quilted, hand or machine **ONLY**.
- E. A separate binding should be used.
- F. Two or more of the following required techniques are allowed:
  - 1. Triangle patterns
  - 2. Embellishments (includes **NON**-stitched appliques)
  - 3. “Fussy-cuts”
  - 4. Mitered corners
  - 5. “On point” rows
  - 6. Challenging fabric (denim, directional print, etc.)
  - 7. Flange or other “embellished” borders
- G. The Exhibit should not use any techniques from Unit 4.
- H. Fabric selection allowed
  - 1. Yardage
  - 2. Applique pre-cuts

#### **QUILTING—UNIT 4**

Class 1734 Quilting Unit 4 Jr.

Class 1735 Quilting Unit 4 Int.

Class 1736 Quilting Unit 4 Sr.

All exhibits will consist of the following along with the e-Record (A and B above):

- C. One finished item illustrating what was learned. Items should include one of the following:
  - 1. Quilt (lap size or larger)
  - 2. Three coordinated pieces, such as a table runner and two placemats or a bed runner and two pillows
- D. Exhibit item must be quilted – hand or machine **ONLY**.
- E. A separate binding should be used.
- F. Two or more of the following required techniques are allowed:
  - 1. Y-seams
  - 2. Curved piecing
  - 3. Free-motion quilting on standard sewing machine
  - 4. Use of ruler-work for quilting on standard machine
  - 5. Foundation or paper piecing
  - 6. Appliques, with stitched designs
- G. No tied quilts or long-arm machine quilting.
- H. Fabric selection allowed:
  - 1. Yardage
  - 2. Applique pre-cuts

#### **QUILTING—UNIT 5 Original Design**

Class 1737 Quilting Unit 5-Original Design Jr.

Class 1738 Quilting Unit 5-Original Design Int.

Class 1739 Quilting Unit 5-Original Design Sr.

All exhibits will consist of the following along with the e-Record (A and B above):

- C. Include the following:
  - a. Picture, sketch, or description of inspiration
  - b. Any sketches, drafts, computer generated designs or blocks

- c. Calculations, measurements and any adaptations or changes
- d. Description of the process or steps
- B. One finished item illustrating what was learned. Items should include one of the following:
  - C. Quilt (lap size or larger)
  - D. Coordinated pieces, such as a table runner and two placemats or a bed runner and two pillows
- C. Exhibit items must be quilted – hand or machine quilted (traditional or long-arm).
- D. A separate binding should be used.
- E. Two or more of the required techniques from previous Units, but the design must be original.
- F. Fabric selection allowed:
  - C. Yardage
  - D. Applique pre-cuts
- G. NO commercial patterns allowed.

### **QUILTING UNIT—6 Long Arm Quilting**

Class 1740 Quilting Unit 6 Int.

Class 1741 Quilting Unit 6 Sr.

All exhibits will consist of the following along with the e-Record (A and B above):

- C. One finished item illustrating what was learned. Items should include one of the following:
  1. Quilt (original design)
  2. Wall hanging
  3. Clothing article using quilting techniques
- D. Exhibited items must use long-arm quilter, free hand, or programmed designs.
- E. A separate binding should be used.
- F. Use any three of the required techniques from Units 2, 3, or 4.
- G. Fabric selection allowed:
  1. Yardage
  2. Pre-cuts

### **Home Design and Décor**

Glenda Wentworth, Superintendent

**Note: Please read 4-H Project Exhibit Rules on pages 3 and 4.**

Project Exhibit Rules:

- A. Only the current year's records should be submitted.
- B. The articles may be used before exhibiting but should be clean and in good condition when exhibited.
- C. All exhibit items must have the name, age and county of the exhibitor attached. This information should be attached on the back and at the left-hand corner of the article.

### **Definitions of Decorative Accessory and Household Items**

A decorative accessory is a small decoration piece (not furniture such as end tables, nightstands, sofas, chairs or window and floor coverings) which adds spice to a room. Examples:

- A. Lampshades
- B. Picture frames
- C. Trays
- D. Small jewelry boxes
- E. Shadow boxes
- F. Small collectibles
- G. Vases
- H. Candlesticks
- I. Pillows, etc.

A household item is a small useable piece (not furniture such as end tables, nightstands, sofas, chairs or window and floor covering).

Examples:

- A. Wastebasket
- B. Canister
- C. Planters
- D. Foot stools, etc.

### **HOME DESIGN AND DÉCOR—UNIT 1**

Class 1801 Home Design & Décor Unit 1 Jr.

Class 1802 Home Design & Décor Unit 1 Int.

Class 1803 Home Design & Décor Unit 1 Sr.

All exhibits will consist of the following:

- A. Completed Home Design and Décor e-Record presented in a sturdy binder/notebook. Include in your project story why you chose your exhibit, how you plan to use it, what other items you made, and what recycled or reusable items you used this year.
- B. Include the following information on the Home Design and Décor page: pictures of other recycled items made during your project (a minimum of at least two photos). These are in addition to the photo required in the e-Record.
- C. Select one of the following using at least 50 percent recycled or reused items (no furniture):
  - 1. Use recycled material to make one of the following to be used outside.
    - a. Bird feeder or birdhouse
    - b. Wind chime
    - c. Picnic caddy

**OR**

- 2. Using at least 50% recycled or reused items (no furniture) to make one of the following items to be used inside the house.
  - a. Centerpiece for table
  - b. Planter
  - c. Room or desk organizer
  - d. Decorative accessory for the home (see definition)
  - e. Household item (see definition)
  - f. Wall hanging (3' x 2')
- D. Completed Activity – Include the painted color wheel from p. 9 or 10 and the painted Color Activity #2 (mixed hues to create tints and shades) from page 15 in the Unit 1 manual in the e-Record.

### **HOME DESIGN AND DÉCOR —UNIT 2**

Class 1804 Home Design and Décor Unit 2 Jr.

Class 1805 Home Design and Décor Unit 2 Int.

Class 1806 Home Design and Décor Unit 2 Sr.

All exhibits will consist of the following:

- A. Completed Home Design and Décor e-Record presented in a sturdy binder/notebook. Include in your project story why you chose your exhibit, how you plan to use it and what other items you made.
- B. Include the following information on the Home Design and Décor page in the e-Record.
  - 1. Two or more exhibit photos showing item in place where it will be used and as a part of the total room design. These are in addition to the photos required in the e-Record.
  - 2. A statement on how you improved your family's safety or a family escape plan.
- C. One item or set from the following:
  - 1. Communication board (3' x 2')
  - 2. Room or desk organizer
  - 3. A wall hanging 3' x 2'
  - 4. Decorative accessory
  - 5. Household item (see definition)

## 6. Family escape plan

### HOME DESIGN AND DÉCOR—UNIT 3

Class 1807 Home Design and Décor Unit 3 Jr.

Class 1808 Home Design and Décor Unit 3 Int.

Class 1809 Home Design and Décor Unit 3 Sr.

All exhibits will consist of the following:

- A. Completed Home Design and Decor e-Record presented in a sturdy binder/notebook, including room scheme. Include in your project story why you chose your exhibit, how you plan to use it, what other items you made and what recycled or reusable items you used this year.
- B. Select one of the following for an exhibit:
  - 1. A refinished or refurbished piece of furniture. To refurbish is to restore a furniture piece to a new look by repairing damage and/or replacing seating or upholstery caused by heavy wear or neglect. Refinishing is when you strip off the old finish and apply a new finish or color that was not original to that piece of furniture.
    - a. Attach pictures showing the original piece, one during the refinishing or refurbishing process, and one of the completed pieces. These photos are in addition to the photos required in the e-Record.
    - b. A brief description of how the piece(s) fit into the room placed in the e-Record.

**OR**

- 2. Select from one of the items below to exhibit:
  - a. A brief description of the window treatment or bedcovering you made or purchased that includes how it fits into the design of the room and, if purchased, why?
  - b. Attach up to 4 photos showing the exhibited item(s) in use in the room. These are in addition to the photos required in the e-Record.

**OR**

- 3. An emergency weather plan for your family. Where would you go? What type of items would you have in case of emergency? What personal items would you take with you? Place the emergency plan in the e-Record.

### HOME DESIGN AND DÉCOR—UNIT 4

Class 1810 Home Design and Décor Unit 4 Int.

Class 1811 Home Design and Décor Unit 4 Sr.

All exhibits will consist of the following:

- A. Completed Home Design and Décor e-Record presented in a sturdy binder/notebook.
- B. Include in the e-Record a written statement with the following information:
  - 1. Goals
  - 2. What your plan was for this project.
  - 3. Did you accomplish your goals?
  - 4. List the resources that you used.
  - 5. How did you share your project?
  - 6. How did you evaluate your project?
- C. Select one of the following for an exhibit:
  - 1. Design board (art board, corrugated plastic, etc.) 22" x 30". Foam core or foam board for mounting samples. The design board will include samples of paint, fabric, flooring, etc., for the room you are designing

**OR**

- 2. Job Shadow Exhibit—display board (3' x 4') demonstrating what profession you are interested in and who you job-shadowed (profession, job title of person shadowing, what you learned from the experience, and if you still want to be in the profession, why or why not?). Include pictures or any record you have kept providing evidence of your job shadow experience.

OR

3. Portfolio Exhibit

- a. A physical representation of the career or business product such as a model, prototype or display/portfolio that includes images of accomplished work.
- b. Written explanation that demonstrates knowledge of the related career or business field, potential careers, and the appropriate requirements for achievement in that field.

## **Mechanical Sciences Projects**

### **Computer Science**

**Note:** Please read 4-H Project Exhibit Rules on pages 3 and 4.

1. 4-H members may stay in a unit for more than one year. The exhibit must be different each year.
2. Youth are only allowed to enter a display board exhibit or programming exhibit, but not both.

**Beginning programming** – a program using Scratch (or other uncomplicated graphic programming language). The program should include eight different commands including looping and getting input from the keyboard and mouse.

**Intermediate Programming** – a program using Scratch (or other uncomplicated graphic programming language) that you have downloaded from the Internet and modified. Compare the two programs and demonstrate the changes you have made to the original program; OR create an animated storybook or video game using Scratch (or other simple programming language).

**Advanced Programming** – an original program using a higher-level programming language such as Python, JavaScript, Java, C++, etc.

#### **LEVEL 1-DISCOVERING COMPUTER SCIENCE & PROGRAMMING THROUGH SCRATCH**

##### **Display Board Exhibits**

Class 1901 Computer Science Display Board Jr.

Class 1902 Computer Science Display Board Int.

Class 1903 Computer Science Display Board Sr.

##### **Beginning Programming**

Class 1904 Beginning Programming Jr.

Class 1905 Beginning Programming Int.

Class 1906 Beginning Programming Sr.

#### **LEVEL 2-DISCOVERING COMPUTER SCIENCE & PROGRAMMING THROUGH SCRATCH**

##### **Display Board Exhibits**

Class 1907 Computer Science Display Board Int.

Class 1908 Computer Science Display Board Sr.

##### **Intermediate Programming**

Class 1909 Intermediate Programming Int.

Class 1910 Intermediate Programming Sr.

#### **Level 3-DISCOVERING COMPUTER SCIENCE & PROGRAMMING THROUGH SCRATCH**

##### **Display Board Exhibits**

Class 1911 Computer Science Display Board Int.

Class 1912 Computer Science Display Board Sr.

##### **Advanced Programming**

Class 1913 Advanced Programming Int.

Class 1914 Advanced Programming Sr.

All exhibits will consist of the following:

- A. One sturdy binder/notebook that contains the **Discovering Computer Science & Programming Through Scratch Student Notebook** for Level 1 and Level 2 and the **Discovering Computer**

**Science & Programming Through Scratch Level 3: Recursion** manual for Level 3 and completed Computer Science e-Record.

- B. A completed exhibit consists of **ONE** of the following:
1. A display board illustrating a topic learned as a part of the 4-H project. The standardized display board size of 4 ft. x 3 ft. is to be used with 4-H projects. No additional items may be included in front of the display board. All items must be attached to the display boards.
  2. **Programming Exhibit** (a printed copy of a digital presentation is required and placed in your e-record.) Electronic equipment will only be used during judging time and will not remain on display during the fair. Programs available online (such as Scratch) should include a link to the specific project you have created.
    - a. **Beginning Programming** –a program using Scratch (or other uncomplicated graphic programming language). The program should include eight different commands including looping and getting input from the keyboard and mouse.
    - b. **Intermediate Programming** –a program using Scratch (or other uncomplicated graphic programming) that you have downloaded from the Internet and modified. Compare the two programs and demonstrate the changes you made to the original program; OR create an animated storybook or video game using Scratch (or other simple graphical programming language). If using Scratch, include a clone or list in the program.
    - c. **Advanced Programming** –create a program using a control or event block that controls other blocks of code and that executes code with the intended outcome OR an original program using higher level programming language such as Python, Javascript, Java, C++, etc. that executes code with the intended outcome.

## COMPUTER SCIENCE AND CODING

### Display Board Exhibits

Class 1915 Computer Science and Coding Display Board Int.

Class 1916 Computer Science and Coding Display Board Sr.

### Programming Exhibits

Class 1917 Computer Science and Coding Programming Int.

Class 1918 Computer Science and Coding Programming Sr.

### Website Exhibits

Class 1919 Computer Science and Coding Website Int.

Class 1920 Computer Science and Coding Website Sr.

All exhibits will consist of the following:

- A. One sturdy binder/notebook that contains the completed Computer Science e-Record.
- B. A completed exhibit consists of **ONE** of the following:
1. **Display Board** - A display board illustrating a topic learned as a part of the 4-H project. Use the *Everything You Need to Ace Computer Science and Coding in One Big Fat Notebook* resource for ideas. The standardized display board size of 4 ft. x 3 ft. is to be used with 4-H projects. No additional items may be included in front of the display board. All items must be attached to the display boards. (You may create a display board with information about your program or website with screen capture images illustrating what you have learned.)
  2. **Programming** - An original program using Scratch or Python using variables, conditional statements, and loops. The program should be more advanced than programs created in previous programming units.
  3. **Website** – Submit text document(s) with your HTML code/CSS for the website you designed that can be viewed on a laptop or a handheld device. Include screen capture images of your website along with the code. Use Unit 8 in the *Everything You Need to Ace Computer Science and Coding in One Big Fat Notebook* resource for information. In your e-Record story, be sure to address how you would provide cyber security for your website.

## Electricity

Note: Please read 4-H Project Exhibit Rules on pages 3 and 4.

The standardized display board size of 4 ft. x 3 ft. is to be used with 4-H projects. No additional items may be included in front of the display board.

Note: Please make sure that all items are attached securely to the exhibit and that they are labeled with the name of the exhibitor.

## **FOR ALL ELECTRICITY CLASSES**

All exhibits will consist of the following e-Record information (A) along with each unit's additional requirements (B).

- A. Completed 4-H Electric project manual (at least three required activities completed; at least four Optional activities - Brain Boosters completed; at least two leadership activities completed); and the e-Record presented in a sturdy binder/notebook.

### **MAGIC OF ELECTRICITY—UNIT 1**

#### **Display Board Exhibits**

- Class 2001 Magic of Electricity Display Board Unit 1 Jr.  
Class 2002 Magic of Electricity Display Board Unit 1 Int.  
Class 2003 Magic of Electricity Display Board Unit 1 Sr.

#### **Stand Alone Exhibits**

- Class 2004 Magic of Electricity Stand Alone Unit 1 Jr.  
Class 2005 Magic of Electricity Stand Alone Unit 1 Int.  
Class 2006 Magic of Electricity Stand Alone Unit 1 Sr.

All exhibits will consist of the following along with the e-Record (A above):

- B. One article or display board (not both) that you have made as a part of this unit of study.  
(Example: homemade flashlight, simple switch, circuit with two batteries and one light bulb, compass, electromagnet, galvanometer, electric motor, etc.).

### **INVESTIGATING ELECTRICITY—UNIT 2**

#### **Display Board Exhibits**

- Class 2007 Investigating Electricity Display Board Unit 2 Jr.  
Class 2008 Investigating Electricity Display Board Unit 2 Int.  
Class 2009 Investigating Electricity Display Board Unit 2 Sr.

#### **Stand Alone Exhibits**

- Class 2010 Investigating Electricity Stand Alone Unit 2 Jr.  
Class 2011 Investigating Electricity Stand Alone Unit 2 Int.  
Class 2012 Investigating Electricity Stand Alone Unit 2 Sr.

All exhibits will consist of the following along with the e-Record (A above):

- B. One article or display board (not both) that you have made as a part of this unit of study.  
(Example: circuit diagrams with explanation, series circuit, parallel circuit, momentary switch, three-way switch, soldered connection, rocket launcher, burglar alarm, etc.).

### **WIRED FOR POWER—UNIT 3**

#### **Display Board Exhibits**

- Class 2013 Wired for Power Display Board Unit 3 Jr.  
Class 2014 Wired for Power Display Board Unit 3 Int.  
Class 2015 Wired for Power Display Board Unit 3 Sr.

#### **Stand Alone Exhibits**

- Class 2016 Wired for Power Stand Alone Unit 3 Jr.  
Class 2017 Wired for Power Stand Alone Unit 3 Int.  
Class 2018 Wired for Power Stand Alone Unit 3 Sr.

All exhibits will consist of the following along with the e-Record (A above):

- B. One article or display board (not both) that you have made as a part of this unit of study. (Example: electrical tool and supply kit, display of symbols on wires and cables and their meanings, display of light bulbs and the jobs they do best, display board on how to read an appliance name tag, chart showing the electrical usage of appliances, display board on how to replace a switch, etc.).

### **ENTERING ELECTRONICS—UNIT 4 (Intermediate/Senior Advanced)**

#### **Display Board Exhibits**

Class 2019 Entering Electronics Display Board Unit 4 Int.

Class 2020 Entering Electronics Display Board Unit 4 Sr.

#### **Stand Alone Exhibits**

Class 2021 Entering Electronics Stand Alone Unit 4 Int.

Class 2022 Entering Electronics Stand Alone Unit 4 Sr.

All exhibits will consist of the following along with the e-Record (A above):

- B. One article or display board (not both) which you made as a part of this unit of study. (Example: display of electronic parts, diode, transistor, light-emitting diode (LED), LED flasher photocell alarm, light meter, silicon-controlled rectifier (SCR) intruder alarm, 6-8-watt amplifier with integrated circuit, etc.).

## **Metalworking**

Note: Please read 4-H Project Exhibit Rules on pages 3 and 4.

**The following types of projects cannot be exhibited at the ELBERT COUNTY Fair:** Weaponry (knives, swords, spear points, etc.), cutting tools (axes, saws, knives, machetes, etc.), sharp home or garden tools (garden hoe, shears, loppers, saws, etc.), sharp outdoor, hunting or fishing equipment (frog gig, leg trap, arrow points, hooks, fishing/meat gaff, etc.), propulsion or motorized vehicles (go carts, etc.) or any other item deemed dangerous or inappropriate by the superintendent(s). Make sure exhibits are safe to handle with no sharp protruding parts.

For ideas, tips, and answers to frequently asked questions, please see the Metalwork Tip Sheet at: [Metalworking Project and Tip Sheet \(colostate.edu\)](http://colostate.edu).

### **FOR ALL METALWORKING CLASSES**

All exhibits must consist of the following e-Record information (A) along with each unit's additional requirements (B through E).

- A. A completed Metalworking e-Record presented in a sturdy binder/notebook.

### **INTRODUCTION TO METALWORK—UNIT 1**

Class 2101 Intro to Metalwork Unit 1 Jr.

Class 2102 Intro to Metalwork Unit 1 Int.

Class 2103 Intro to Metalwork Unit 1 Sr.

All exhibits will consist of the following along with the e-Record (A above):

- B. Exhibit the following:
- One each of the three required weld samples in addition to your project: **Lap, Butt, and 90-degree T joints**  
Requirements:
    - Each joint will be made of 2 separate pieces, 3" to 4" long of 1" to 2" wide flat strap metal, between 1/8" (11 gauge) and 1/4" thick
    - On clean steel with no paint, oil, or other finishes

- iii. Single pass weld on one side of each required joint
- iv. Name, county, and class number on bottom of each completed joint in permanent ink or paint
- b. An exhibit up to 3'x3'x7' and under **50 lbs.**
  - i. No paint, oil, or other finishes
  - ii. No grinding or smoothing of welds
  - iii. Metal only – No wood, plastic, or other building materials on the project to be judged
- c. Photos of the exhibit project construction (placed in e-Record)
  - i. Four photos of the prep work (drafting plans, measuring, cutting, torching, bending, fitting, etc.)
  - ii. Four photos of actual welds (individual welds)
  - iii. Four photos of finish work (no painting, no oil, no seasoning, front view, side view, top view, best overall view)

### **METAL FABRICATION—UNIT 2**

Class 2104 Metal Fabrication Unit 2 Jr.

Class 2105 Metal Fabrication Unit 2 Int.

Class 2106 Metal Fabrication Unit 2 Sr.

All exhibits will consist of the following along with the e-Record (A above):

B. Exhibit the following:

- 1. An exhibit project up to 3'x3'x7' and under **100 lbs.**
  - a. Paint, oil, and other finishes are allowed
  - b. Grinding of welds is allowed
  - c. Wood, plastic, or other building materials are allowed but must be less than 50% of the project materials
  - d. No moving parts – must be a static item (no hinges, wheels, slides, etc.)
  - e. No additional features (lights, electrical, water, etc.)
- 2. Photos of the exhibit project construction (placed in e-Record)
  - a. Four photos of the prep work (drafting plans, measuring, cutting, torching, bending, fitting, etc.)
  - b. Four photos of actual welds (individual welds)
  - c. Four photos of finish work (no painting, no oil, no seasoning, front view, side view, top view, best overall view)

### **ADVANCED METAL FABRICATION—UNIT 3**

Class 2107 Advanced Metal Fabrication Unit 3 Jr.

Class 2108 Advanced Metal Fabrication Unit 3 Int.

Class 2109 Advanced Metal Fabrication Unit 3 Sr.

All exhibits will consist of the following along with the e-Record (A above):

B. Exhibit the following:

- 1. An exhibit project up to 3'x3'x7' and under **150 lbs.**
  - a. Paint, oil and other finishes are allowed
  - b. Grinding of welds is allowed
  - c. Wood, plastic, or other building materials are allowed but must be less than 50% of the project materials
  - d. Moving parts allowed (hinges, wheels, slides, etc.)
  - e. Additional features allowed (lights, electrical, water, etc.)
- 2. Photos of the exhibit project construction (placed in e-Record)
  - a. Four photos of the prep work (drafting plans, measuring, cutting, torching, bending, fitting, etc.)
  - b. Four photos of actual welds (individual welds)

- c. Four photos of finish work (no painting, no oil, no seasoning, front view, side view, top view, best overall view)

## **LARGE EXHIBIT FABRICATION—UNIT 4**

Class 2110 Large Exhibit Fabrication Unit 4 Jr.

Class 2111 Large Exhibit Fabrication Unit 4 Int.

Class 2112 Large Exhibit Fabrication Unit 4 Sr.

All exhibit will consist of the following along with the e-Record (A above):

B. Exhibit the following:

1. A 4' wide by 3' tall display board of your completed project with the following minimum information
  - a. Title or description of exhibit project
  - b. Left Side - Four photos minimum of the prep work (drafting plans, measuring, cutting, torching, bending, fitting, etc.)
  - c. Right Side - Four photos minimum of completed welds
    - i. No paint, oil, or other finishes on welds
    - ii. No grinding or smoothing of welds
  - d. Center - Four photos of minimum finish project (front view, side view, top view, best overall view)
  - e. All project photos must be 5"x 7" minimum
  - f. Captions for each photo
  - g. Project requirements
    - i. An exhibit project larger than 3'x3'x7' or over 150 lbs.
    - ii. Paint, oil, and other finishes are allowed
    - iii. Grinding of welds is allowed

C. Wood, plastic, or other building materials are allowed but must be less than 50% of the project materials.

D. Moving parts allowed (hinges, wheels, slides, etc.)

E. Additional features allowed (lights, electrical, water, etc.)

## **Model Rocketry**

Note: Please read 4-H Project Exhibit Rules on pages 3 and 4.

### **Note to all units:**

Project Exhibit Rules for All Units:

1. Rocket exhibits must relate to the skill level for the unit entered. Units 1-4 should include the color picture of the rocket and skill level title from the rocket-kit package as part of its record book. All project material must be organized and secured in a sturdy binder/notebook. Unit 6 must have a copy of plans or blueprints including instructions "step by step" to build the rocket.
2. Each unit level will list what type of fins (single-piece or multi-piece) and what type of material (plastic, balsa or basswood, plywood, composite, or fiberglass) may be used for the exhibit rocket. Fins in all units must be finished with paint except for clear fins used with scale or novelty rockets. **No plastic fins for Units 1-3.**
3. Unit 4 members may build helicopter and glider recovery rocket kits.
4. Rocket design cannot include humanoid characteristics or representations (like dolls). Any toy or 3D human or animal representation can only be in the payload section of the model rocket. Any object displayed (and launched) with the rocket should be non-living.
5. Rockets are to be displayed and held **vertically** by a substantial rod (not a coat hanger rod) or wood support (like an unpainted dowel rod that fits into the motor mount cavity snugly). The base board should be heavier than the rocket and appropriate to the size of the rocket, not to exceed 12"x12"x1" thick. **Only the rocket will be judged.** The base, at minimum, must be sanded to eliminate splinters. Optionally, the base could be clear coated or painted with up to

three colors. No triangular or three-footed stands can be used for displaying the rocket. The stand or base the rocket is on must be flat.

6. Do not include live or expended engines in the rocket exhibited.
7. If the rocket is damaged in launching, it can still be judged for quality of construction along with the e-Record and pictures.
8. Display rockets cannot be used for the Rocket Fly Day competition at State Fair.
9. No launching pads should be used for displaying the rockets.
10. Launching your display rocket is not a requirement. If you are participating in Rocket Fly, make two rockets – one for exhibit and one to launch. At least one rocket should be launched as part of the project to complete the “Launch Information” section of the supplemental sheet. If you are not able to launch due to a fire ban, etc. you must have an explanation on that sheet.
11. Decals are required. Any decals used must be on the rocket and do not have to be the decals included in the kit.
12. For each rocket used during your project, including your exhibit rocket, make a copy of the Model Rocketry Information page of the e-Record. Include the following information for each rocket on a page of its own:
  - a. Exhibit manufacturer and model name
  - b. Skill level
  - c. Number of fins and fin material
  - d. Recovery system type
  - e. Where the rocket is from (i.e., stock kit)
  - f. Rocket power
  - g. Fuselage type
  - h. Engine information: engine type, engine code, label color
13. If you launched any of the rockets used in your project, provide the following information on the Model Rocketry Information page under “Rocket Launch Information”.
  - A. Number of times launched
  - B. Type of launch pad used
  - C. Kind of electrical system used
  - D. Tracking method used if applicable
  - E. Altitude achieved (optional)
  - F. Observer’s distance from rocket (observations of rocket stability, flight path, etc.; any special problems before, during and after launching)
  - G. Did you have any special problems, before, during, and after launching?
  - H. What did you do to overcome the problems you encountered? Were any modifications made?
14. Different model rocket companies use different rating scales. Be sure to check specific unit requirements to ensure that the rocket you select fits the unit requirements.

Please read specific rules for your unit.

## **INTRODUCTION TO ROCKETRY—UNIT 1**

Class 2201 Intro to Rocketry Unit 1 Jr.

Class 2202 Intro to Rocketry Unit 1 Int.

Class 2203 Intro to Rocketry Unit 1 Sr.

All exhibits will consist of the following:

- A. Completed Model Rocketry e-Record, including the Model Rocketry Information page, presented in a sturdy binder/notebook.
- B. One rocket personally built related to work done in Unit 1. The rocket must be a Skill Level I **Beginner/Basic (using Skill Level 1-5 system)** OR Estes Intermediate type rocket meeting at maximum these criteria:
  1. Three to four wood fins
  2. Parachute or streamer recovery system

3. Unit 1 rockets must be able to safely fly using a single-stage A or B class motor.

## **BASIC MODEL ROCKETRY—UNIT 2**

Class 2204 Basic Model Rocketry Unit 2 Jr.

Class 2205 Basic Model Rocketry Unit 2 Int.

Class 2206 Basic Model Rocketry Unit 2 Sr.

All exhibits will consist of the following:

- A. Completed Model Rocketry e-Record, including the Model Rocketry Information page, presented in a sturdy binder/notebook.
- B. One rocket personally built or display related to work done in Unit 2. The rocket must be a Skill Level II Intermediate (using Skill Level 1-5 system) OR Estes Advanced type rocket meeting at maximum these criteria:
  1. Three to eight wood fins, including canard fins
  2. Parachute or streamer recovery system
  3. Unit 2 rockets must be able to safely fly using a single-stage A, B, or C class motor.

## **INTERMEDIATE MODEL ROCKETRY—UNIT 3**

Class 2207 Intermediate Model Rocketry Unit 3 Jr.

Class 2208 Intermediate Model Rocketry Unit 3 Int.

Class 2209 Intermediate Model Rocketry Unit 3 Sr.

All exhibits will consist of the following:

- A. Completed Model Rocketry e-Record, including the Model Rocketry Information page, with completed questions in manual pages 31-35 (Note: This manual is being updated. If page numbers change, 4-H members will be notified.) presented in a sturdy binder/notebook.
- B. One rocket personally built-in unit or display related to work done in Unit 3. The rocket must be a Skill Level III (using Skill Level 1-5 system) OR Estes Expert type rocket meeting at maximum these criteria:
  1. Any combination of balsa wood fins
  2. Parachute recovery system
  3. Unit 3 rockets must be able to safely fly using a single-stage B to E class motor (does not use A motor).

## **ADVANCED MODEL ROCKETRY—UNIT 4**

### **Finished fins of any type**

Class 2210 Advanced Model Rocketry Unit 4 Jr.

Class 2211 Advanced Model Rocketry Unit 4 Int.

Class 2212 Advanced Model Rocketry Unit 4 Sr.

All exhibits will consist of the following:

- A. Completed Model Rocketry e-Record, including the Model Rocketry Information page, with completed questions in manual pages 14-18 (Note: This manual is being updated. If page numbers change, 4-H members will be notified.) presented in a sturdy binder/notebook.
- B. One rocket personally built-in unit or display related to work done in Unit 4. The rocket can be from Skill Level I up to Skill Level IV (using Skill Level 1-5 system) OR Estes Intermediate up to Estes Master type rocket meeting at maximum these criteria:
  1. Any combination of balsa wood or plastic fins.
  2. Parachute, helicopter, or glider recovery system
  3. Unit 4 rockets must be able to safely fly using a single-stage A to E class motor.

## **DESIGNER MODEL ROCKETRY—UNIT 6**

### **Finished fins of any type**

Class 2213 Designer Model Rocketry Unit 6 Int.

All exhibits will consist of the following:

- A. Completed Model Rocketry e-Record with design worksheets and completed questions in manual on pages 35-39, presented in a sturdy binder/notebook. Include a copy of the plans or blueprints on how to build the rocket. If you used any software, such as an Excel spreadsheet, include that in your binder/notebook.
- B. If a rocket was launched provide the following information on the Model Rocketry page.
  - 1. Number of times successfully launched; kind of launch pad used.
  - 2. Kind of electrical system used.
  - 3. Tracking method used.
  - 4. Observer's distance from rocket; observations of rocket stability, flight path, etc.; altitude achieved and how it was determined; any special problems before, during and after launching.
  - 5. What did you do to overcome any problems you encountered?
- C. One rocket **personally designed**, built (no kits or plans) and used in unit or display related to work done.

## Robotics & Engineering

**Note:** Please read 4-H Project Exhibit Rules on pages 3 and 4.

- A. In Junk Drawer Units (1-3), members are only allowed to enter a display board exhibit or a stand-alone exhibit, not both.
- B. Robotics Platforms is just a fancy way to say robotics kits or robotics materials. Some types of commercial kits or platforms include: Arduinio Kits, Brushbot, Make, Hexy, Pushbutton Programmable Robotic Kit, Sparky, Cubelets, Robotic Arm Edge, Sparkfun Red Bot, Multiplo, TETRIX, CEENBot, and VEX, current and discontinued LEGO Robotics kits with programable robots including EV3, WeDo, NXT, SPIKE Prime, Mindstorm, and Boost.
- C. Youth working individually on a robotics platform should enroll in the Platform Units. Youth should advance between Units 4-6 as they feel they are progressing in their project knowledge.
- D. Youth working on a team on a robotics platform should enroll in the Team Robotics Unit. Despite being on a team, the fair exhibit is meant to be completed and entered by an individual member.
- E. For more information about various team competitive robotics opportunities, see the list from the Colorado 4-H STEM website.

### FOR ALL ROBOTICS & ENGINEERING CLASSES

All exhibits will consist of the following e-Record information (A) along with each unit's additional requirements (B).

- A. A sturdy binder/notebook that contains the completed 4-H Robotics e-Record.

### JUNK DRAWER ROBOTICS & ENGINEERING—UNIT 1—GIVE ROBOTICS A HAND

#### Display Board Exhibits

- Class 2301 Give Robotics a Hand Display Board Unit 1 Jr.
- Class 2302 Give Robotics a Hand Display Board Unit 1 Int.
- Class 2303 Give Robotics a Hand Display Board Unit 1 Sr.

#### Stand Alone Exhibits

- Class 2304 Give Robotics a Hand Stand Alone Unit 1 Jr.
- Class 2305 Give Robotics a Hand Stand Alone Unit 1 Int.
- Class 2306 Give Robotics a Hand Stand Alone Unit 1 Sr.

All exhibits will consist of the following along with the e-Record (A above):

- B. **For Display Board Exhibits:** One display board which you have made as a part of this unit of study. The standard display board size of 4' x 3' is to be used for 4-H projects.

**For Stand-Alone Exhibits:** One article which you have made as a part of this unit of study  
(Examples: marshmallow catapult, robotic arm, robotic gripper.)

## **JUNK DRAWER ROBOTICS & ENGINEERING—UNIT 2—ROBOTS ON THE MOVE**

### **Display Boards Exhibits**

Class 2307 Robots on the Move Display Board Unit 2 Jr.

Class 2308 Robots on the Move Display Board Unit 2 Int.

Class 2309 Robots on the Move Display Board Unit 2 Sr.

### **Stand Alone Exhibits**

Class 2310 Robots on the Move Stand Alone Unit 2 Jr.

Class 2311 Robots on the Move Stand Alone Unit 2 Int.

Class 2312 Robots on the Move Stand Alone Unit 2 Sr.

All exhibits will consist of the following along with the e-Record (A above):

B. **For Display Board Exhibits:** One display board which you have made as a part of this unit of study. The standard display board size of 4' x 3' is to be used for 4-H projects.

**For Stand-Alone Exhibits:** One article which you have made as a part of this unit of study.  
(Examples: clipmobile, can-can robot, gear train, es-car-go, sea hunt)

## **JUNK DRAWER ROBOTICS & ENGINEERING—UNIT 3—MECHATRONICS**

### **Display Board Exhibits**

Class 2313 Mechatronics Display Board Unit 3 Jr.

Class 2314 Mechatronics Display Board Unit 3 Int.

Class 2315 Mechatronics Display Board Unit 3 Sr.

### **Stand Alone Exhibits**

Class 2316 Mechatronics Stand Alone Unit 3 Jr.

Class 2317 Mechatronics Stand Alone Unit 3 Int.

Class 2318 Mechatronics Stand Alone Unit 3 Sr.

All exhibits will consist of the following along with the e-Record (A above):

B. **For Display Board Exhibits:** One display board which you have made as a part of this unit of study. The standard display board size of 4' x 3' is to be used for 4-H projects.

**For Stand-Alone Exhibits:** One article which you have made as part of this unit of study.  
(Examples: forward and reverse, wall follower, breadboard, say what? build your robot.)

## **ROBOTICS PLATFORMS—UNIT 4—BEGINNER**

### **(Display Board Only)**

#### **Display Board Exhibits**

Class 2319 Platforms—Beginner Display Board Unit 4 Jr.

Class 2320 Platforms—Beginner Display Board Unit 4 Int.

Class 2321 Platforms—Beginner Display Board Unit 4 Sr.

All exhibits will consist of the following along with the e-Record (A above):

B. One display board which you have made as a part of this unit of study. The standardized display board size of 4' X 3' is to be used for 4-H projects.

## **ROBOTICS PLATFORMS—UNIT 5—INTERMEDIATE (Display Board Only)**

Class 2322 Platforms—Intermediate Display Board Unit 5 Jr.

Class 2323 Platforms—Intermediate Display Board Unit 5 Int.

Class 2324 Platforms—Intermediate Display Board Unit 5 Sr.

All exhibits will consist of the following along with the e-Record (A above):

- B. One display board which you have made as a part of this unit of study. The standardized display board size of 4' X 3' is to be used for 4-H projects.

### **ROBOTICS PLATFORMS—UNIT 6—ADVANCED (Display Board Only)**

- Class 2325 Platform—Advanced Display Board Unit 6 Jr.  
Class 2326 Platform—Advanced Display Board Unit 6 Int.  
Class 2327 Platform—Advanced Display Board Unit 6 Sr.

All exhibits will consist of the following along with the e-Record (A above):

- B. One display board which you have made as a part of this unit of study. The standardized display board size of 4' X 3' is to be used for 4-H projects.

### **TEAM ROBOTICS—UNIT 7 (Display Board Only)**

- Class 2328 Team Robotics Display Board Unit 7 Jr.  
Class 2329 Team Robotics Display Board Unit 7 Int.  
Class 2330 Team Robotics Display Board Unit 7 Sr.

All exhibits will consist of the following along with the e-Record (A above):

- B. One display board which you have made as a part of this unit of study. The standardized display board size of 4' X 3' is to be used for 4-H projects.

## **Small Engines**

Note: Please read 4-H Project Exhibit Rules on pages 3 and 4.

### **Display Board Exhibits**

#### **CRANK IT UP—UNIT 1**

- Class 2401 Crank It Up Display Board Unit 1 Jr.  
Class 2402 Crank It Up Display Board Unit 1 Int.  
Class 2403 Crank It Up Display Board Unit 1 Sr.

#### **WARM IT UP—UNIT 2**

- Class 2404 Warm It Up Display Board Unit 2 Jr.  
Class 2405 Warm It Up Display Board Unit 2 Int.  
Class 2406 Warm It Up Display Board Unit 2 Sr.

#### **TUNE IT UP—UNIT 3**

- Class 2407 Tune It Up Display Board Unit 3 Jr.  
Class 2408 Tune It Up Display Board Unit 3 Int.  
Class 2409 Tune It Up Display Board Unit 3 Sr.

### **Stand Alone Exhibits**

#### **CRANK IT UP—UNIT 1**

- Class 2410 Crank It Up Stand Alone Unit 1 Jr.  
Class 2411 Crank It Up Stand Alone Unit 1 Int.  
Class 2412 Crank It Up Stand Alone Unit 1 Sr.

#### **WARM IT UP—UNIT 2**

- Class 2413 Warm It Up Stand Alone Unit 2 Jr.  
Class 2414 Warm It Up Stand Alone Unit 2 Int.  
Class 2415 Warm It Up Stand Alone Unit 2 Sr.

#### **TUNE IT UP—UNIT 3**

- Class 2416 Tune It Up Stand Alone Unit 3 Jr.

Class 2417 Tune It Up Stand Alone Unit 3 Int.

Class 2418 Tune It Up Stand Alone Unit 3 Sr.

All exhibits will consist of the following:

- A. A completed Small Engines manual (page 4, at least 7 activities completed) and e-Record presented in a sturdy binder/notebook, including appropriate sections in the manual completed and other items such as diagrams, drawings, photographs, or attachments related to activities in the manual.
- B. Exhibit may be a display board or a stand-alone item (but not both) such as: air and fuel systems, the electrical systems, a diagram of the engine block, etc. A display board can be on any topic from the Small Engines manual. You may use diagrams, drawings, and photographs. Label and use captions to make your display as educational as possible. The standardized display board size of 4 ft. x 3 ft. is to be used with 4-H projects. No additional items may be included in front of the display board.

## **ADVANCED ENGINES—UNIT 4**

### **Display Board Exhibits**

Class 2419 Advanced Small Engines Display Board Unit 4 Int.

Class 2420 Advanced Small Engines Display Board Unit 4 Sr.

### **Stand Alone Exhibits**

Class 2421 Advanced Small Engines Stand Alone Unit 4 Int.

Class 2422 Advanced Small Engines Stand Alone Unit 4 Sr.

All exhibits will consist of the following:

Note: This unit can be used for any type of engine (tractor, car, etc.)

- A. A completed Small Engine Unit 4 e-Record with emphasis on your accomplishments in your story presented in a sturdy binder/notebook (Self-determined).
- B. Include the following information in the Small Engine Unit 4 e-Record:
  1. Written description of your project:
    - a. goals
    - b. plans
    - c. accomplishments
    - d. evaluation
- C. Exhibit may be a display board or a stand-alone item (but not both) such as: air and fuel systems, the electrical system, a diagram of the engine block, etc. A display board can be on any topic related to engines. You may use diagrams, drawings, charts and photographs. Label and use captions to make your display as educational as possible. The standardized display board size of 4 ft. x 3 ft. is to be used with 4-H projects. No additional items may be included in front of the display board.

## **Woodworking**

Note: Please read 4-H Project Exhibit Rules on pages 3 and 4.

Units 1, 2, and 3 in Woodworking have very specific restrictions on the tools used in building an article to display. This is done for reasons of safety and to provide a fair comparison among projects in a unit. An exhibit that shows evidence of not following these restrictions will not be ranked in the top-ten placing.

Projects for Units 1 and 2 will be a maximum size of 3 feet by 3 feet by 7 feet as they are meant to be used or displayed. The item must be stable when standing to be displayed.

Note: In making all placings, judges will consider straightness, accuracy and smoothness of saw cuts; the difficulty and preciseness of joints; the skill employed in the use of nails, screws, gluing and other hardware; freedom from tool or sandpaper marks; appropriate finish evenly applied; article attractiveness, proportions, and use of proper wood for the intended use; ability to follow instructions; quality of workmanship; and completeness of e-Record. Always use proper safety gear. Make sure exhibits are safe to handle with no sharp protruding parts.

For large exhibits, like beds, please bring only the head and foot boards. No rails. **Please notify the State 4-H Office if exhibit is oversized.**

### **MEASURING UP—UNIT 1**

Class 2501 Measuring Up Unit 1 Jr.

Class 2502 Measuring Up Unit 1 Int.

Class 2503 Measuring Up Unit 1 Sr.

Note: Use hand tools only. Articles made with tools other than hand tools will not be ranked in the top-ten placing. A hand miter box is allowed. Size restriction: 3' x 3' x 7'.

### **MAKING THE CUT—UNIT 2**

Class 2504 Making the Cut Unit 2 Jr.

Class 2505 Making the Cut Unit 2 Int.

Class 2506 Making the Cut Unit 2 Sr.

Note: Allowed tools are hand tools, power hand drill, miter box (non-powered), oscillating (pad) sander and jigsaw. Articles made with power tools other than those listed will not be ranked in the top-ten placing. Size restriction: 3' x 3' x 7'.

### **NAILING IT TOGETHER—UNIT 3**

Class 2507 Nailing It Together Unit 3 Jr.

Class 2508 Nailing It Together Unit 3 Int.

Class 2509 Nailing It Together Unit 3 Sr.

Note: Allowed tools are hand tools, power hand drill, miter box, jigsaw, scroll saw, power sanders, table saw, drill press, band saw, rabbet plane, jointer, and router. Articles made with power tools other than those listed will not be ranked in the top-ten placing.

### **FINISHING UP—UNIT 4**

Class 2510 Finishing Up Unit 4 Jr.

Class 2511 Finishing Up Unit 4 Int.

Class 2512 Finishing Up Unit 4 Sr.

Note: Allowed tools are all those mentioned in Units 1-3, plus circular saw, radial arm saw, planer, wood lathe, chop saw, and other power tools needed to complete Unit 4 projects.

All exhibits will consist of the following:

- A. Completed Woodworking e-Record with the plans used for making the exhibit (tell if the plan was your own, manual, or other) presented in a sturdy binder/notebook.
- B. Include the following information on the Woodworking page:
  1. Plan source used (your own, manual or other)
  2. Kind of wood used
  3. Names of joints and fasteners used
  4. A drawing or other copy of a plan for the article exhibited:
    - a. dimensions
    - b. list of materials used
    - c. description of any changes in the article's specifications
    - d. reason for the changes
  5. List of all articles made

The drawing or plan itself will not be judged. It is only for the judge's use in judging the article exhibited. If the drawing is missing, the exhibit will not be ranked in the top-ten placings.

- C. Any one article constructed by the exhibitor using the skills learned in the unit.

## **Natural Resources Projects**

### **Beekeeping**

Note: Please read 4-H Project Exhibit Rules on pages 3 and 4.

#### **BEEKEEPING—UNIT 1**

- Class 2601 Beekeeping Unit 1 Jr.  
Class 2602 Beekeeping Unit 1 Int.  
Class 2603 Beekeeping Unit 1 Sr.

All exhibits will consist of the following:

One sturdy binder/notebook that contains the completed Beekeeping Units 1-3 Display Board e-Record.

A. Exhibit one of the following topics on a display board:

- a. Flowers used to make honey (display pressed flowers from 10 different Colorado plants that bees use for making honey)
- b. Uses of honey and beeswax, past and present
- c. Setting up a beehive
- d. Safe handling of bees
- e. History of beekeeping

The standardized display board size of 4 ft. x 3 ft. is to be used with 4-H projects. No additional items may be included in front of the display board.

#### **BEEKEEPING—UNIT 2**

- Class 2604 Beekeeping Unit 2 Jr.  
Class 2605 Beekeeping Unit 2 Int.  
Class 2606 Beekeeping Unit 2 Sr.

All exhibits will consist of the following:

A. One sturdy binder/notebook that contains the completed Beekeeping Units 1–3 Display Board e-Record if you did not keep a hive or the Beekeeping Units 2–4 e-Record if you did keep a hive.

B. Exhibit: Working with honeybees (present a topic from your manual to teach about working with honeybees (example: Regional Differences of Beekeeping). Use your knowledge and creativity to display this information on a display board. The standardized display board size of 4 ft. x 3 ft. is to be used with 4-H projects. No additional items may be included in front of the display board.

#### **BEEKEEPING—UNIT 2 (STAND-ALONE EXHIBITS)**

##### **EXTRACTED HONEY**

- Class 2607 Extracted Honey Unit 2 Jr.  
Class 2608 Extracted Honey Unit 2 Int.  
Class 2609 Extracted Honey Unit 2 Sr.

All exhibits will consist of the following:

A. One sturdy binder/notebook that contains the completed Beekeeping Units 2–4 e-Record.

B. Exhibit: Extracted honey shown in **two eight-ounce glass jars by volume** (preferably a smooth and clear canning jar, so the judge can see the clarity and quality of the honey) with screw top lids.

Both jars must be filled to the same level up to the neck of the jar. Jars must be labeled on the bottom of the jar with name, county, class, where honey was extracted and date.

### **CHUNK HONEY**

- Class 2610 Chunk Honey Unit 2 Jr.
- Class 2611 Chunk Honey Unit 2 Int.
- Class 2612 Chunk Honey Unit 2 Sr.

All exhibits will consist of the following:

- A. One sturdy binder/notebook that contains the completed Beekeeping Units 2–4 e-Record.
- B. Exhibit: Chunk Honey in **two one-pound glass jars** (wide-mouth opening). Jars must be labeled on the bottom with name, county, class, where honey was taken and date.

### **CUT COMB HONEY**

- Class 2613 Cut Comb Honey Unit 2 Jr.
- Class 2614 Cut Comb Honey Unit 2 Int.
- Class 2615 Cut Comb Honey Unit 2 Sr.

All exhibits will consist of the following:

- A. One sturdy binder/notebook that contains the completed Beekeeping Units 2–4 e-Record.
- B. Exhibit: Cut Comb Honey placed in two 4 ½" x 4 ½" size boxes. Boxes must be labeled on the bottom with name, county, class, where honey was taken and date.

### **WOODEN WARE**

- Class 2616 Wooden Ware Unit 2 Jr.
- Class 2617 Wooden Ware Unit 2 Int.
- Class 2618 Wooden Ware Unit 2 Sr.

All exhibits will consist of the following:

- A. One sturdy binder/notebook that contains the completed Beekeeping Units 2–4 e-Record.
- B. Exhibit: Wooden Ware examples – toolbox, hive components, etc. Item must be labeled on the bottom or back of the display with name, county, class, and description of item. Display must fit within a 3' x 3' x 7' space.

### **BEEKEEPING—UNIT 3**

- Class 2619 Beekeeping Unit 3 Jr.
- Class 2620 Beekeeping Unit 3 Int.
- Class 2621 Beekeeping Unit 3 Sr.

All exhibits will consist of the following:

- A. One sturdy binder/notebook that contains the completed Beekeeping Units 1–3 Display Board e-Record if you did not keep a hive or the Beekeeping Units 2–4 e-Record if you did keep a hive.
- B. Exhibit: Prepare an educational display board or notebook about honeybees or beekeeping (example topics: diseases, seasonal colony management, etc.). Use your knowledge and creativity to display this information on a display board or in a notebook. The standardized display board size of 4 ft. x 3 ft. is to be used with 4-H projects. No additional items may be included in front of the display board.

### **BEEKEEPING—UNIT 3 (STAND-ALONE EXHIBITS)**

#### **EXTRACTED HONEY**

- Class 2622 Extracted Honey Unit 3 Jr.
- Class 2623 Extracted Honey Unit 3 Int.

Class 2624 Extracted Honey Unit 3 Sr.

Exhibit will consist of the following:

- A. One sturdy binder/notebook that contains the completed Beekeeping Units 2–4 e-Record.
- B. Exhibit Extracted honey shown in **two eight-ounce glass jars by volume** (preferably a smooth and clear canning jar, so the judge can see the clarity and quality of the honey) with screw top lids. Both jars must be filled to the same level up to the neck of the jar. Jars must be labeled on the bottom of the jar with name, county, class, where honey was taken and date.

### **CHUNK HONEY**

Class 2625 Chunk Honey Unit 3 Jr.

Class 2626 Chunk Honey Unit 3 Int.

Class 2627 Chunk Honey Unit 3 Sr.

All exhibits will consist of the following:

- A. One sturdy binder/notebook that contains the completed Beekeeping Units 2–4 e-Record.
- B. Exhibit: Chunk Honey in **two one-pound glass jars** (wide-mouth opening). Jars must be labeled on the bottom with name, county, class, where honey was taken and date.

### **CUT COMB HONEY**

Class 2628 Cut Comb Honey Unit 3 Jr.

Class 2629 Cut Comb Honey Unit 3 Int.

Class 2630 Cut Comb Honey Unit 3 Sr.

All exhibits will consist of the following:

- A. One sturdy binder/notebook that contains the completed Beekeeping Units 2–4 e-Record.
- B. Exhibit: Cut Comb Honey placed in two 4 ½" x 4 ½" size boxes. Boxes must be labeled on the bottom with name, county, class, where honey was taken and date.

### **COMB HONEY**

Class 2631 Comb Honey Unit 3 Jr.

Class 2632 Comb Honey Unit 3 Int.

Class 2633 Comb Honey Unit 3 Sr.

All exhibits will consist of the following:

- A. One sturdy binder/notebook that contains the completed Beekeeping Units 2–4 e-Record.
- B. Exhibit: Comb Honey – 2 sections (honey built by bees in frames of wood commonly called "sections"). Boxes are usually 4½" x 4½" (shown as described in Beekeeping Unit 2). Sections must be labeled with name, county, class, where taken and date.

### **WOODEN WARE**

Class 2634 Wooden Ware Unit 3 Jr.

Class 2635 Wooden Ware Unit 3 Int.

Class 2636 Wooden Ware Unit 3 Sr.

All exhibits will consist of the following:

- A. One sturdy binder/notebook that contains the completed Beekeeping Units 2–4 e-Record.
- B. Exhibit: Wooden Ware examples – tool box, hive components, etc. Item must be labeled on the bottom or back of the display with name, county, class, and description of item. Display must fit within a 3' x 3' x 7' space.

### **ADVANCED BEEKEEPING—UNIT 4**

***(Must have at least two years of beekeeping project experience and have your own hives.)***

Class 2637 Advanced Beekeeping Unit 4 Int.

Class 2638 Advanced Beekeeping Unit 4 Sr.

All exhibits will consist of the following:

- A. One sturdy binder/notebook that contains the completed Beekeeping Units 2–4 e-Record.
- B. A detailed notebook describing your project including your goals, plans, accomplishments and your evaluation of results. You may use pictures or any records you have kept that provides evidence of your accomplishments. This notebook is your main project exhibit and will count for 75 percent of the scoring. If an item was made as part of your project, a sample may be displayed as further evidence of the quality of your project. Display must not require over a 2' x 2' x 2' area or consist of more than three items. A label must be on the back of the notebook and if an additional item is displayed, put another label on the back or bottom of the item.

## Entomology

**Note:** Please read 4-H Project Exhibit Rules on pages 3 and 4.

Entomology Workbook Required. Entomology is the study of insects. Insects have three body regions, three pairs of legs and one pair of antennae, wings in adult stage, typically two pairs. Spiders are Arachnida which have four pairs of legs, two body regions, and no antennae. Recommended Level is associated with the existing Unit numbers, which have also been adjusted in the workbook.

Exhibits in entomology are limited to insect specimens only.

- A. Level 1 and Unit 7 have a display board option as well as an insect collection option. For Level 1, Unit 1 may be skipped if first year members want to do a collection. Unit 2 may be repeated for two years to build their beginner collection.
- B. Each year 4-H members build on their collection by adding new insects as required for each unit. More than one box may be used to display your collection. Refer to the exhibit requirements for the number of insects to collect for that unit.
- C. Acceptable sizes of handmade entomology display boxes include:
  - a. 12" W x 16" L x 3" deep
  - b. 12" W x 18" L x 3 ½" deep
  - c. 18" W x 24" L x 3 ½" deep
- D. Also acceptable are commercially available or the following industry standard entomology display box sizes. (Boxes that are 3" or 3 ½" deep are recommended to fit all insect pins.)
  - a. California: 19" W x 17" L x 2-1/2" deep
  - b. Cornell: 19" W x 16-1/2" L x 3" deep
  - c. KU: 19" W x 19" L x 3" deep
  - d. USNM: 18" W x 18" deep x 3" deep
- E. Glass tops on entomology display cases should slide to the top or side of the case to prevent them from slipping out and breaking when placed on display.
- F. Regular insect pins are required in all units.
- G. On **UNIT 2** through **UNIT 7** classes, the insect display must include two labels attached to insect pins. The first label should have the date and location where insects were collected. The second label should have the family/common name of the insect pinned.
- H. Larvae should not be included in your collection until Unit 6.
- I. Unit 7 may be repeated **for** more than one year with a different special collection or display board each year.
- J. It is permissible but not required to collect insects outside of Colorado. However, if you do travel to collect insects, at least 75 percent of your collection should be from **within the** state.

### FOR UNIT 1-6 ENTOMOLOGY CLASSES

Exhibit will consist of the following e-Record information (A and B) along with each unit's additional requirements (C to D):

- A. Completed e-Record, Teaming with Insects manual (or copies of relevant pages from the manual), and the Entomology Workbook: 4-H Project Supplement presented in a sturdy binder/notebook.

- B. Do a minimum of eight activities of any combination from your unit's Teaming with Insects manual and/or your unit's section of the Entomology Workbook. Include the Entomology Activity Log Sheet listing which activities you did, which book the activity is from, and the date completed.

### **TEAMING WITH INSECTS—LEVEL 1: DISPLAY BOARD—UNIT 1**

Class 2701 Learning About Insects Display Board Jr.

Class 2702 Learning About Insects Display Board Int.

Class 2703 Learning About Insects Display Board Sr.

Exhibit will consist of the following along with the e-Record (A and B above):

- C. A display board representing some phase of your project work. This could include a chart or special equipment used or developed for the activities in the workbook. The standardized display board size of 4 ft. x 3 ft. is to be used with 4-H projects. No additional items may be included in front of the display board.

### **TEAMING WITH INSECTS—LEVEL 1: BEGINNER INSECT COLLECTION—UNIT 2**

Class 2704 Beginner Insect Collection Jr.

Class 2705 Beginner Insect Collection Int.

Class 2706 Beginner Insect Collection Sr.

All exhibits will consist of the following along with the e-Record (A and B above):

- C. Insect collections—display no fewer than 25 and no more than 75 adult insects in at least four different orders. Standard-sized display boxes with removable glass covers are required. Regular insect pins are required.

### **TEAMING WITH INSECTS—LEVEL 2—UNIT 3**

Class 2707 Beginner Entomologist Jr.

Class 2708 Beginner Entomologist Int.

Class 2709 Beginner Entomologist Sr.

All exhibits will consist of the following along with the e-Record (A and B above):

- C. Insect collection—display no fewer than 50 and no more than 100 insects including a representative from at least six different orders (one order developed in water) and include one incomplete metamorphosis (egg-nymph-adult), correctly labeled. Standard-sized display boxes with removable glass covers are required. Regular insect pins are required.
- D. Include a special collection of at least eight different kinds of insects. Place these in a separate area of your display box or in a separate box. The insects in the special collection count toward the total number of insects needed for this unit.

### **TEAMING WITH INSECTS—LEVEL 2—UNIT 4**

Class 2710 Beginner Entomologist Year 2 Jr.

Class 2711 Beginner Entomologist Year 2 Int.

Class 2712 Beginner Entomologist Year 2 Sr.

All exhibits will consist of the following along with the e-Record (A and B above):

- C. Report on at least three "Dig Deeper" special activities in the manual that you completed and include them in the e-Record before the story.
- D. Insect collection—display no fewer than 75 and no more than 125 insects including a representative from at least eight different orders. Standard-sized display boxes with removable glass covers are required. Regular insect pins are required.

### **TEAMING WITH INSECTS—LEVEL 3—UNIT 5**

Class 2713 Insect Investigations Jr.

Class 2714 Insect Investigations Int.

Class 2715 Insect Investigations Sr.

All exhibits will consist of the following along with the e-Record (A and B above):

- C. Report on at least three “Dig Deeper” special activities in the manual that you completed and include them in the e-Record before the story.
- D. Insect collection—display no fewer than 100 and no more than 150 insects in ten different orders, correctly labeled orders. Standard-sized display boxes with removable glass covers are required. Regular insect pins are required.

### **TEAMING WITH INSECTS—LEVEL 3: IMMATURE INSECTS AND LIFE STAGES—UNIT 6**

Class 2716 Immature Insects & Life Stages Jr.

Class 2717 Immature Insects & Life Stages Int.

Class 2718 Immature Insects & Life Stages Sr.

All exhibits will consist of the following along with the e-Record (A and B above):

- C. Display your regular insect collection. Your collection should include no more than 200 insects.
- D. Display a collection of at least 10 larvae or immature insects in vials of rubbing alcohol, hand sanitizer, or similar preservation.

### **EXPLORING WITH INSECTS ADVANCED—UNIT 7**

Class 2719 Exploring with Insects Advanced Jr.

Class 2720 Exploring with Insects Advanced Int.

Class 2721 Exploring with Insects Advanced Sr.

All exhibits will consist of the following:

- A. Completed Entomology e-Record with emphasis on your accomplishments in the story.
- B. Display your regular insect collection. Your collection should include no more than 250 insects.
- C. Display a special collection of beetles, flies, grasshoppers, butterflies or some other order. Display at least 50 insects with no more than two of the same species. Give information on your special collection in your story.

OR

A display board or stand-alone item representing some phase of your advanced project work. This could include a chart or information on an area you have researched, or special equipment used or developed. The standard display board size of 4 ft. x 3 ft. is to be used with 4-H projects.

## **Gardening**

**Note:** Please read 4-H Project Exhibit Rules on pages 3 and 4.

The gardening project focuses on activities related to vegetable gardening: planning, planting, experimenting, understanding soils, seeds, insects, plant care, harvesting, processing, exploring careers, etc.

### **SEE THEM SPROUT—UNIT 1**

Class 2801 See Them Sprout Unit 1 Jr.

Class 2802 See Them Sprout Unit 1 Int.

Class 2803 See Them Sprout Unit 1 Sr.

### **LET’S GET GROWING! —UNIT 2**

Class 2804 Let’s Get Growing Unit 2 Jr.

Class 2805 Let’s Get Growing Unit 2 Int.

Class 2806 Let’s Get Growing Unit 2 Sr.

### **TAKE YOUR PICK—UNIT 3**

Class 2807 Take Your Pick Unit 3 Jr.

Class 2808 Take Your Pick Unit 3 Int  
Class 2809 Take Your Pick Unit 3 Sr.

### **GROWING PROFITS—UNIT 4 (Senior Advanced)**

Class 2810 Growing Profits Unit 4 Sr.

All exhibits will consist of the following:

- A. A gardening project manual and e-Record presented in a sturdy binder/notebook including these pages of the manual you are using this year:
1. See them Sprout:
    - a. Complete a minimum of four activities each year (Year 1: pages 4-21; Year 2: pages 22-37).
    - b. Complete pages 43 and 44 in Year 1 and 43 and 45 in Year 2.
  2. Let's Get Growing:
    - a. Complete a minimum of four activities each year (Year 1: pages 4-21; Year 2: pages 22-37).
    - b. Complete pages 45 and 46 in Year 1 and 45 and 47 in Year 2.
  3. Take Your Pick:
    - a. Complete a minimum of four activities each year (Year 1: pages 4-21; Year 2: pages 22-40; Year 3: pages 41-54).
    - b. Complete pages 63 and 64 in Year 1, pages 63 and 65 in Year 2, and pages 63 and 66 in Year 3.
  4. Growing Profits:
    - a. Complete a minimum of four activities each year (Year 1: pages 4-19; Year 2: pages 20-39; Year 3: pages 40-56).
    - b. Complete pages 65 and 66 in Year 1, pages 65 and 67 in Year 2, and pages 65 and 68 in Year 3.
- B. A display board illustrating a topic investigated during the project year. The standardized display board size of 4 ft. x 3 ft. is to be used with 4-H projects. No additional items may be included in front of the display board.

## **Outdoor Adventures**

Note: Please read 4-H Project Exhibit Rules on pages 3 and 4.

List the day, month, and year for the date of completed activities on page 4 of the manual.

### **HIKING TRAILS—UNIT 1**

Class 2901 Hiking Trails Unit 1 Jr.  
Class 2902 Hiking Trails Unit 1 Int.  
Class 2903 Hiking Trails Unit 1 Sr.

### **CAMPING ADVENTURES—UNIT 2**

Class 2904 Camping Adventures Unit 2 Jr.  
Class 2905 Camping Adventures Unit 2 Int.  
Class 2906 Camping Adventures Unit 2 Sr.

### **BACKPACKING EXPEDITIONS—UNIT 3**

Class 2907 Backpacking Expeditions Unit 3 Jr.  
Class 2908 Backpacking Expeditions Unit 3 Int.  
Class 2909 Backpacking Expeditions Unit 3 Sr.

All exhibits will consist of the following:

- A. A completed manual of at least six chapter activities and at least six Reach the Peak activities completed each year. The e-Record presented in a sturdy binder/notebook is also required, which includes the appropriate sections in the manual completed, the e-Record and other items or attachments related to the activities in the manual.
- B. A display board illustrating a topic investigated during the project year. You may use diagrams, drawings, charts, and photographs. Label and use captions to make your display as educational as possible. The standardized display board size of 4 ft. x 3 ft. is to be used with 4-H projects. No additional items may be included in front of the display board.

## Shooting Sports

Cody Groff, Superintendent

**Note: Please read 4-H Project Exhibit Rules on pages 3 and 4.**

Project Exhibit Rules:

- A. There is one e-Record that contains the inventory sheet and the discipline-specific activity log records for all the disciplines that are required for this project.
- B. Be sure to include the activity log for the discipline that you are exhibiting in your record book. If you are planning to do a shooting sports exhibit in more than one discipline at the county or state fair, you will need to have a separate e-record for each exhibit with the discipline specific activity log.
- C. Display should illustrate a chosen aspect of skill areas. This is separate from the ELBERT COUNTY 4-H Shooting Sports Championships. (The standardized display board size of 4 ft. x 3 ft. is to be used with 4-H projects. No additional items may be included on or in front of the display board.) No wooden display cases. No humanoid targets are allowed in any form, including within photographs or drawings.
- D. Counties may enter only one exhibit per class. Members may have entries in both the display board classes and the stand-alone classes.
- E. **No live ammo or projectiles including pellets, round balls, or arrows (no field/target points, broadheads, or knocks allowed), knives, functional or nonfunctional complete firearms (i.e., replica firearms, hand-made, or toy-type, etc.) or bows will be allowed as an exhibit. No actions or receivers of firearms allowed. Only 2-D cardboard or paper cutouts resembling complete firearms or bows are allowed for display purposes in the Display, Stand-Alone, and Decorative Item classes.**
  - a. **Functional – Any firearm or bow that can expel a projectile.**
  - b. **Non-Functional – Any firearm unable to expel a projectile.**
- F. **Projects containing any prohibited items listed in E must be judged and displayed from a photograph or a notebook of photographs and descriptions of the project and its use instead of being judged in person. Restricted physical items are prohibited from being displayed at State Fair.**
- G. Do not use the word weapon when creating your display. Make sure that there are no safety violations in your display. (Example: no earplugs, no safety glasses on a photo of a youth holding his/her gun.) Do not use pictures of firearms that are primarily tactical in design in your display, i.e., AR platform or military type firearms.
- H. Historic photos or artist depictions used in exhibits that are not displaying current 4-H practices must have the following disclaimer posted with them, “These are historic photographs and artist renderings. Therefore, they do not follow modern safety protocols for Colorado 4-H.”
- I. The display board topics should stay in close relationship with your discipline. Please do not use topics outside the scope of your 4-H project. (Example: .22 Rifle Project should not use the topic of different types of military machine guns.)
- J. Stand-alone items are items that are made to enhance the discipline, such as a quiver, gun case, gun stand, etc. No display boards or decorative items are allowed in the Stand-Alone Classes.
- K. All items in the Stand-Alone and Decorative Item classes will be a maximum size of 3 feet wide, 3 feet deep and 7 feet in height as the item is intended for display. The item must be stable when

standing to be displayed within the 3' x 3' space. If an exhibit is larger than this, a notebook can be used as an exhibit showing how and what was made.

- L. For those members who are exhibiting both a display board and a stand-alone, they may copy their e-Record. Each exhibit must have an e-Record. Be sure to highlight what you are exhibiting in your e-Record.
- M. No stand-alone items that are an exhibit at the time of the contests will be allowed to be removed from the building to be used at the contests.
- N. Items to be exhibited in the Decorative Item class are items that are used **as a decoration and must relate to the discipline(s) in which the member is enrolled.** **Be sure to look at the classes to determine where your exhibit item fits.** If you have questions about your display or requirements, contact your county Extension 4-H Specialist/Coordinator.

## **Display Board Classes**

### **ARCHERY**

Class 3001 Archery Display Board Jr.

Class 3002 Archery Display Board Int.

Class 3003 Archery Display Board Sr.

### **AIR RIFLE**

Class 3004 Air Rifle Display Board Jr.

Class 3005 Air Rifle Display Board Int.

Class 3006 Air Rifle Display Board Sr.

### **SHOTGUN**

Class 3007 Shotgun Display Board Jr.

Class 3008 Shotgun Display Board Int.

Class 3009 Shotgun Display Board Sr.

### **.22 RIFLE**

Class 3010 .22 Rifle Display Board Jr.

Class 3011 .22 Rifle Display Board Int.

Class 3012 .22 Rifle Display Board Sr.

### **.22 PISTOL**

Class 3013 .22 Pistol Display Board Jr.

Class 3014 .22 Pistol Display Board Int.

Class 3015 .22 Pistol Display Board Sr.

### **BLACK POWDER MUZZLELOADING**

Class 3016 Muzzleloading Display Board Jr.

Class 3017 Muzzleloading Display Board Int.

Class 3018 Muzzleloading Display Board Sr.

### **AIR PISTOL**

Class 3019 Air Pistol Display Board Jr.

Class 3020 Air Pistol Display Board Int.

Class 3021 Air Pistol Display Board Sr.

### **WESTERN HERITAGE**

Class 3022 Western Heritage Display Board Jr.

Class 3023 Western Heritage Display Board Int.

Class 3024 Western Heritage Display Board Sr.

### **OUTDOOR SKILLS**

Class 3025 Outdoor Skills Display Board Jr.  
Class 3026 Outdoor Skills Display Board Int.  
Class 3027 Outdoor Skills Display Board Sr.

**Members may have entries in both the display board and the stand-alone classes.**

### **Stand-Alone Classes**

Stand-alone items are items that are made to enhance the discipline in which the member is enrolled, such as a quiver, gun case, gun stand, etc. No display boards or decorative items are allowed in the Stand-Alone Classes. No live ammo, broadheads (ex: arrowheads), knives, functional or nonfunctional complete firearms or bows will be allowed to be displayed. Refer to E above.

### **ARCHERY**

Class 3028 Archery Stand-Alone Jr.  
Class 3029 Archery Stand-Alone Int.  
Class 3030 Archery Stand-Alone Sr.

### **AIR RIFLE**

Class 3031 Air Rifle Stand-Alone Jr.  
Class 3032 Air Rifle Stand-Alone Int.  
Class 3033 Air Rifle Stand-Alone Sr.

### **SHOTGUN**

Class 3034 Shotgun Stand-Alone Jr.  
Class 3035 Shotgun Stand-Alone Int.  
Class 3036 Shotgun Stand-Alone Sr.

### **AIR PISTOL**

Class 3037 Air Pistol Stand-Alone Jr.  
Class 3038 Air Pistol Stand-Alone Int.  
Class 3039 Air Pistol Stand-Alone Sr.

### **.22 RIFLE**

Class 3040 .22 Rifle Stand-Alone Jr.  
Class 3041 .22 Rifle Stand-Alone Int.  
Class 3042 .22 Rifle Stand-Alone Sr.

### **.22 PISTOL**

Class 3043 .22 Pistol Stand-Alone Jr.  
Class 3044 .22 Pistol Stand-Alone Int.  
Class 3045 .22 Pistol Stand-Alone Sr.

### **WESTERN HERITAGE**

Class 3046 Western Heritage Stand-Alone Jr.  
Class 3047 Western Heritage Stand-Alone Int.  
Class 3048 Western Heritage Stand-Alone Sr.

### **OUTDOOR SKILLS**

Class 3049 Outdoor Stand-Alone Jr.  
Class 3050 Outdoor Stand-Alone Int.  
Class 3051 Outdoor Stand-Alone Sr.

### **BLACK POWDER MUZZLELOADING**

Class 3052 Muzzleloading Stand-Alone Jr.

Class 3053 Muzzleloading Stand-Alone Int.  
Class 3054 Muzzleloading Stand-Alone Sr.

## DECORATIVE ITEMS

Decorative items are items that **provide aesthetic value as a decoration.** See E above for prohibited items.

All items from all the disciplines that are decorative will be in these classes.

- Class 3055 Shooting Sports Decorative Item Jr.
- Class 3056 Shooting Sports Decorative Item Int.
- Class 3057 Shooting Sports Decorative Item Sr.

All exhibits will consist of the following (see E above for prohibited items):

- A. Completed e-Record for the discipline exhibited to be presented in a sturdy binder/notebook. The e-Record needs to contain the activity log sheet for the discipline being exhibited. The e-Record containing all log sheets can be found at <https://co4h.colostate.edu/4h-project/4-h-shooting-sports-project/>. Items in the Decorative Item class must include the Decorative Item Page in the e-Record and a photo of the exhibit must be included on the Photo page(s).
- B. **Display Board Exhibits:** One display board illustrating something learned in the project this year. The standardized display board size of 4 ft. x 3 ft. is to be used with 4-H projects. No additional items may be included in front of the display board.  
**For Stand-Alone Exhibits:** One article which you have made as a part of the project this year. (Examples: gunstocks, **gun racks**, decoys, quivers, but not limited to just these.) **No** live ammo or projectiles including pellets, round balls, or arrows (with or without field points, broadheads, **or knocks**), knives, functional or nonfunctional firearms or bows will be allowed as an exhibit. The display will be a maximum size of 3 feet wide, 3 feet deep and 7 feet in height and be stable as the item is intended for display.  
**For Decorative Exhibit Items:** One article which you have made as a part of the **discipline(s) in which you are enrolled** this year. This item would be considered a decorative item (lamps, shelves, jewelry, artwork, etc.). The display will be a maximum size of 3 feet wide, 3 feet deep, 7 feet in height, and be stable as the item is intended for display.

## Sportfishing

Note: Please read 4-H Project Exhibit Rules on pages 3 and 4.

- A. **Exhibits may include stand-alone items such as hand-wrapped rods or hand-made lures. Please consider the toxicity of materials used in projects and their impact on fish and their surrounding environment. Be sure anything that may come into contact with fish used for consumption is made with materials that are food safe.**
- B. Exhibit of record kept during the year and display illustrating a chosen aspect of skill area is required. Exhibits may include a display board or a stand-alone item such as hand-wrapped rods or hand-made lures. A display board is to be a specific skill level area related to the exhibit. When using a display board, it is strongly recommended to use photos, drawings, or other illustrations rather than actual items (i.e., rods, reels, other tackle or accessories). Educational materials should not extend beyond the edges of display boards. The standardized display board size of 4 ft. x 3 ft. is to be used with 4-H projects. No additional items may be included in front of the display board. Hooks must be removed from lures and jigs when these items are used in an exhibit. The exceptions are artificial flies, which may be exhibited with functional hooks, but the hook points must be imbedded in material (i.e., rubber, dense cork, etc.) that will secure the flies and offer safety to the judges and other show officials. **Be sure to remove barbs and any other sharp points.**
- C. No knives are to be displayed.
- D. **Members may have entries in both the display board classes and the stand-alone classes.**

- E. For those members who are exhibiting both a display board and a stand-alone, they may copy their e-Record. Each exhibit must have an e-Record. Be sure to highlight what you are exhibiting in your e-Record.
- F. Stand-alone items must not exceed 3 feet in width and depth and 7 feet in height. The item must be stable when standing to be displayed. If an exhibit is larger than these dimensions you may use a notebook as the exhibit and explain how and what was made.

### **Sportfishing Display Board Classes**

#### **TAKE THE BAIT—UNIT 1**

- Class 3101 Take the Bait Display Board Unit 1 Jr.
- Class 3102 Take the Bait Display Board Unit 1 Int.
- Class 3103 Take the Bait Display Board Unit 1 Sr.

#### **REEL IN THE FUN—UNIT 2**

- Class 3104 Reel in the Fun Display Board Unit 2 Jr.
- Class 3105 Reel in the Fun Display Board Unit 2 Int.
- Class 3106 Reel in the Fun Display Board Unit 2 Sr.

#### **CAST INTO THE FUTURE—UNIT 3**

- Class 3107 Cast into the Future Display Board Unit 3 Jr.
- Class 3108 Cast into the Future Display Board Unit 3 Int.
- Class 3109 Cast into the Future Display Board Unit 3 Sr.

### **Sportfishing Stand Alone Classes**

**These classes are for stand-alone items only. No display boards are allowed in these classes.**

#### **TAKE THE BAIT—UNIT 1**

- Class 3110 Take the Bait Stand Alone Unit 1 Jr.
- Class 3111 Take the Bait Stand Alone Unit 1 Int.
- Class 3112 Take the Bait Stand Alone Unit 1 Sr.

#### **REEL IN THE FUN—UNIT 2**

- Class 3113 Reel in the Fun Stand Alone Unit 2 Jr.
- Class 3114 Reel in the Fun Stand Alone Unit 2 Int.
- Class 3115 Reel in the Fun Stand Alone Unit 2 Sr.

#### **CAST INTO THE FUTURE—UNIT 3**

- Class 3116 Cast into the Future Stand-Alone Unit 3 Jr.
- Class 3117 Cast into the Future Stand-Alone Unit 3 Int.
- Class 3118 Cast into the Future Stand-Alone Unit 3 Sr.

All exhibits will consist of the following:

- A. Completed Sportfishing e-Record presented in a sturdy binder/notebook.
- B. Include the following information on the project information page.
  - 1. Record each fishing experience:
    - a. Date
    - b. Location
    - c. Type (pond, lake, reservoir, stream, river or other)
    - d. Name of body of water
    - e. If you caught a fish (If no, what do you think the reason was for not catching fish?)
    - f. If yes, include the following weather information about the day: time of day, air temperature, water temperature, cloud cover and other information about the weather
  - 2. Complete a Catch and Release or Catch and Keep Fish record for your five best fish, caught and released or your five best fish kept, depending on legal limits.
    - a. For Catch and Release record:

- i. species
  - ii. length (nose to tail)
  - iii. girth (around middle)
- b. For Catch and Keep record:
  - i. species
  - ii. approximate weight
- 3. Complete a Fishing Journal for each trip (whether you caught fish or not):
  - a. rod and reel used
  - b. types of rig/bait/lures used
  - c. technique used
  - d. types of structure fished
  - e. other things you want to remember about this trip

## Wildlife

Note: Please read 4-H Project Exhibit Rules on pages 3 and 4.

- A. **Members may have entries in both the display board classes and the stand-alone classes.**
- B. **For those members who are exhibiting both a display board and a stand-alone, they may copy their e-Record. Each exhibit must have an e-Record. Be sure to highlight what you are exhibiting in your e-Record.**

### Wildlife Display Board Classes

#### WILDLIFE CONSERVATION—UNIT 1—The Worth of Wild Roots

Class 3201 The Worth of Wild Roots Display Board Unit 1 Jr.

Class 3202 The Worth of Wild Roots Display Board Unit 1 Int.

Class 3203 The Worth of Wild Roots Display Board Unit 1 Sr.

#### WILDLIFE CONSERVATION—UNIT 2—Living Wild in an Ecosystem

Class 3204 Living Wild in an Ecosystem Display Board Unit 2 Jr.

Class 3205 Living Wild in an Ecosystem Display Board Unit 2 Int.

Class 3206 Living Wild in an Ecosystem Display Board Unit 2 Sr.

#### WILDLIFE CONSERVATION—UNIT 3—Managing in a World With You and Me

Class 3207 Managing in a World Display Board Unit 3 Jr.

Class 3208 Managing in a World Display Board Unit 3 Int.

Class 3209 Managing in a World Display Board Unit 3 Sr.

### Wildlife Stand Alone Classes

**These classes are for stand-alone items only. No display boards are allowed in these classes.**

#### WILDLIFE CONSERVATION—UNIT 1—The Worth of Wild Roots

Class 3210 The Worth of Wild Roots Stand Alone Unit 1 Jr.

Class 3211 The Worth of Wild Roots Stand Alone Unit 1 Int.

Class 3212 The Worth of Wild Roots Stand Alone Unit 1 Sr.

#### WILDLIFE CONSERVATION—UNIT 2—Living Wild in an Ecosystem

Class 3213 Living Wild in an Ecosystem Stand Alone Unit 2 Jr.

Class 3214 Living Wild in an Ecosystem Stand Alone Unit 2 Int.

Class 3215 Living Wild in an Ecosystem Stand Alone Unit 2 Sr.

#### WILDLIFE CONSERVATION—UNIT 3—Managing in a World With You and Me

Class 3216 Managing in a World Stand Alone Unit 3 Jr.

Class 3217 Managing in a World Stand Alone Unit 3 Int.

Class 3218 Managing in a World Stand Alone Unit 3 Sr.

All exhibits will consist of the following:

- A. Completed Wildlife e-Record presented in a sturdy binder/notebook.
- B. Include the following information on the Wildlife page. Show what you did and learned. Show evidence of your personal field experiences, study, or observations.
- C. A display board showing educational information about a topic of interest related to wildlife. **Follow the standardized display board size of 4 ft. x 3 ft.** No additional items may be included in front of the display board. Possible topics could include but are not limited to: species found in Colorado, wildlife habitats, role of predators, types of bird feed, or urban wildlife challenges.
- D. **OR**, instead of a display board, exhibit may be a stand-alone item, such as a wildlife diorama, scrapbook with wildlife information, pictures and news, a bird feeder or bath, or wildlife track molds. Display items should illustrate something learned in the project this year.